

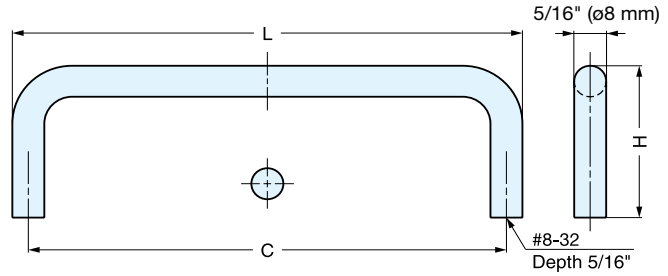
# WIRE PULL



# SWP



• Ideal for harsh and high corrosive environments.



Item No.	L	C	H	Weight (g)	Box (pcs)	Carton (pcs)
SWP-630/S	3-5/16" (84.2 mm)	3" (76.2 mm)	1-5/16" (34 mm)	71	20	200
SWP-635/S	3-13/16" (96.9 mm)	3-1/2" (88.9 mm)		78		
SWP-640/S	4-5/16" (109.6 mm)	4" (101.6 mm)		85		
SWP-696/S	4-1/16" (104 mm)	3-3/4" (96 mm)		81		

Material	Finish
316 Stainless Steel	Satin

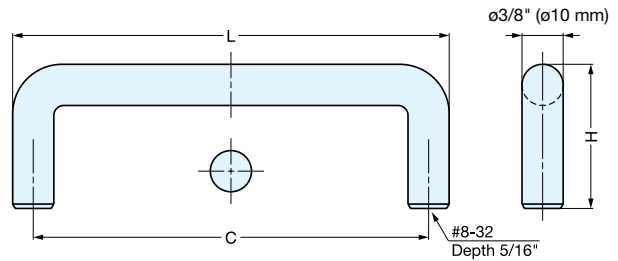
# WIRE PULL



# SWF



• Ideal for harsh and high corrosive environments.



Item No.	L	C	H	Weight (g)	Box (pcs)	Carton (pcs)
SWF-640	4-3/8" (111 mm)	4" (101.5 mm)	1-3/8" (35 mm)	90	20	160
SWF-650	5-3/8" (136.5 mm)	5" (127 mm)		110		160
SWF-660	6-3/8" (162 mm)	6" (152.5 mm)		130		120
SWF-690	9-3/8" (238 mm)	9" (228.5 mm)		200		120
SWF-6120	12-3/8" (314.5 mm)	12" (305 mm)		270		80

Material	Finish
316 Stainless Steel	Satin

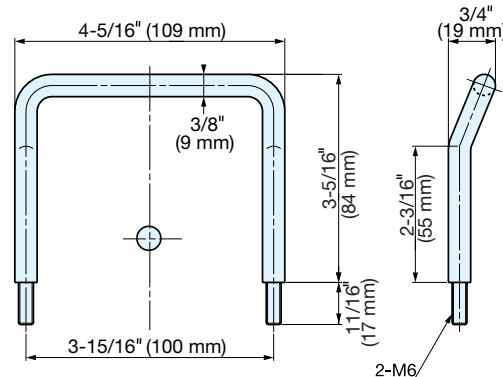
# OFFSET WIRE PULL



# H-75-BL-100



• Fastening nut not included.



Item No.	Weight (g)	Box (pcs)	Carton (pcs)
H-75-BL-100	130	80	400

Material	Finish
304 Stainless Steel	Mirror