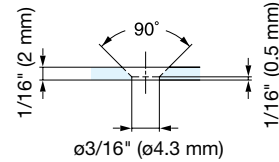
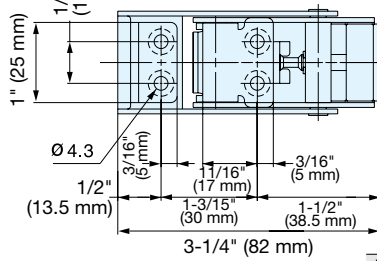
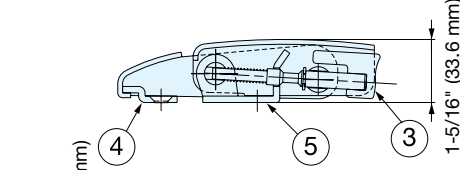
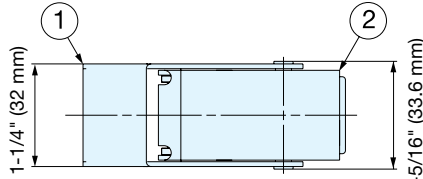




DRAW LATCH (W/SAFETY LOCK)

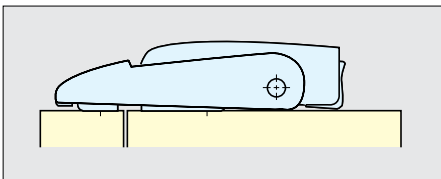


STF-82L



Countersunk Hole

No.	Part Name	Material	Finish
①	Body A	304 Stainless Steel	Satin
②	Body B		
③	Button	Synthetic Rubber	Black
④	Counterplate	304 Stainless Steel	Satin
⑤	Mounting Plate		Polished



Installation

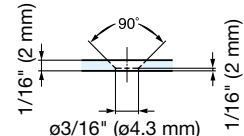
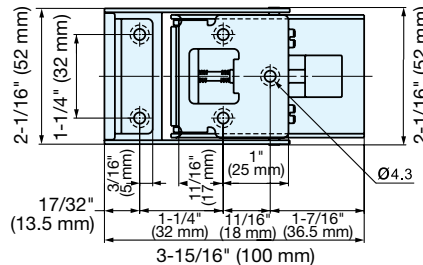
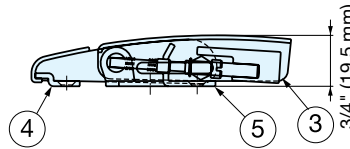
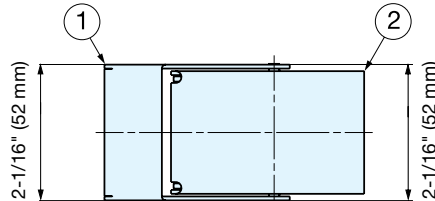
Item No.	Load Capacity	Weight (g)	Box (pcs)	Carton (pcs)
STF-82L	176 lbs (80 kg)	111	12	180

- With safety lock to prevent accidental release.
 - Push safety button and lift to release.
 - Screws not included.
- Recommended screw size M4.

DRAW LATCH (W/SAFETY LOCK)

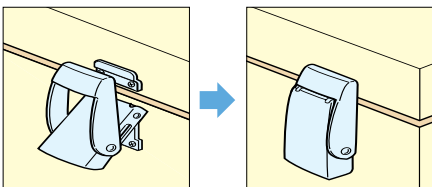


STF-100



Countersunk Hole

No.	Part Name	Material	Finish
①	Body A	304 Stainless Steel	Satin
②	Body B		
③	Button	Synthetic Rubber	Black
④	Counterplate	304 Stainless Steel	Satin
⑤	Mounting Plate		Polished



Installation

Item No.	Load Capacity	Weight (g)	Box (pcs)	Carton (pcs)
STF-100	176 lbs (80 kg)	190	6	120

- With safety lock to prevent accidental release.
 - Push safety button and lift to release.
 - Screws not included.
- Recommended screw size M4.