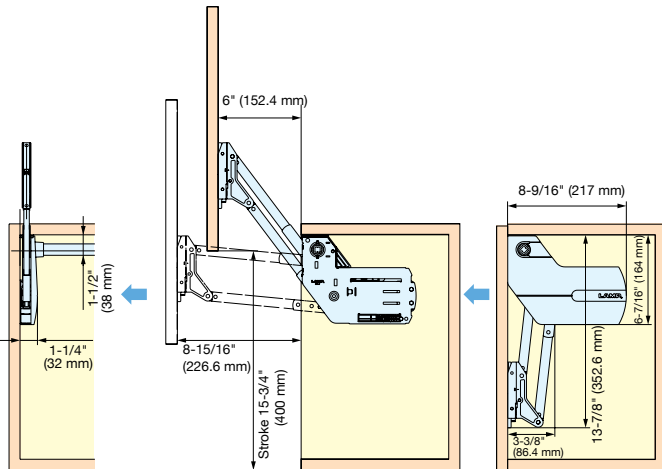


# SWING LIFT-UP STAY



- Lapcon stay for SWING LIFT-UP DOORS.
- Lift-assist mechanism for extra light-opening.
- Door stays in any desired position.
- Damper equipped for soft & silent closing at the end.
- Simple installation by mounting guide plate and slide in main body.
- No hinges are required.
- Connecting bar stays on top for maximum access inside the cabinet.
- Recommended Door Size and Weight :
  - Width, Max. 70-7/8" (1800 mm)
  - Height, 15-3/8"~19-11/16" (390~500 mm)/Door
  - Weight, 11~24.2 lbs (5~11 kg)/Door
- Connecting bar sold separately.



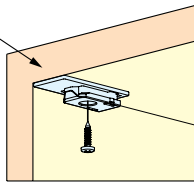
Face Frame Bracket: FFCB-SLU  
(Sold separately, see P.344)



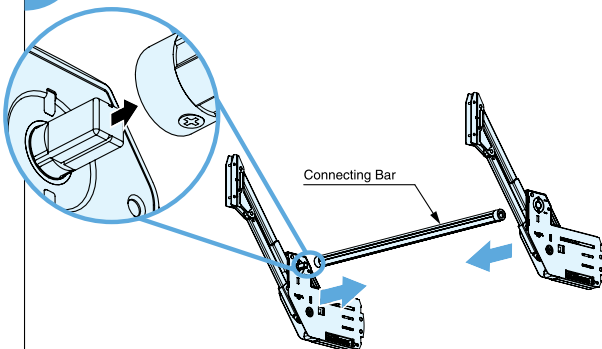
## Simple Installation

### 1 Guide plate installation

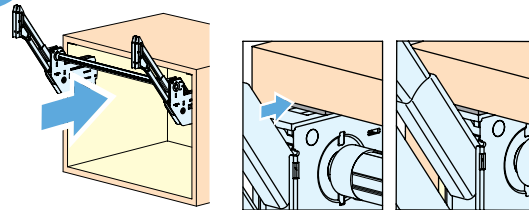
Simply match up to corner



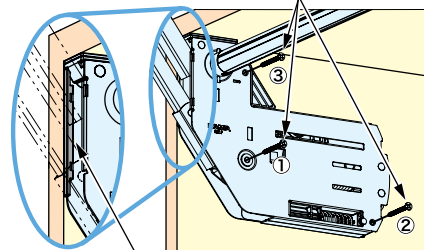
### 2 Connection bar installation



### 3 Body installation



3 screws secure the body



Simply match up to corner.

# SWING LIFT-UP STAY

Item No.	Door Weight	Door Height	Door Width	Box	Carton
SLU-ELAN-S4	11.0~14.3 lbs (5.0~6.5 kg)	15-3/8"~19-11/16" (390~500 mm*)	Max. 70-7/8" (1800 mm)	1 set	5 set
SLU-ELAN-L4	14.3~17.6 lbs (6.5~8.0 kg)				
SLU-ELAN-M4	17.6~20.9 lbs (8.0~9.5 kg)				
SLU-ELAN-H4	20.9~24.2 lbs (9.5~11.0 kg)				

\*Min. inside cabinet height is 14-3/16" (360 mm)  
 \*Door weight includes handle.

## ■ Connecting Bar (Sold separately)

Item No.	Max. Cabinet Width	Max. Interior Cabinet Width
ELB-480	23-5/8" (600 mm)	22-1/4" (566 mm)
ELB-780	35-1/2" (900 mm)	34-1/8" (866 mm)
ELB-1080	47-1/4" (1200 mm)	45-7/8" (1166 mm)
ELB-1380	59" (1500 mm)	57-3/4" (1466 mm)
ELB-1680	70 7/8" (1800 mm)	69-1/2" (1766 mm)

\*Please specify the cabinet width when ordering. Connecting bar can be trimmed as necessary by customer.

# FACE FRAME BRACKETS

- Bracket(s) are available to be used with below items on face frame cabinet.
- Screw set included in each set.
- \*Detailed information is shown on the following two pages.

