

# VERTICAL SWING DOWN MECHANISM



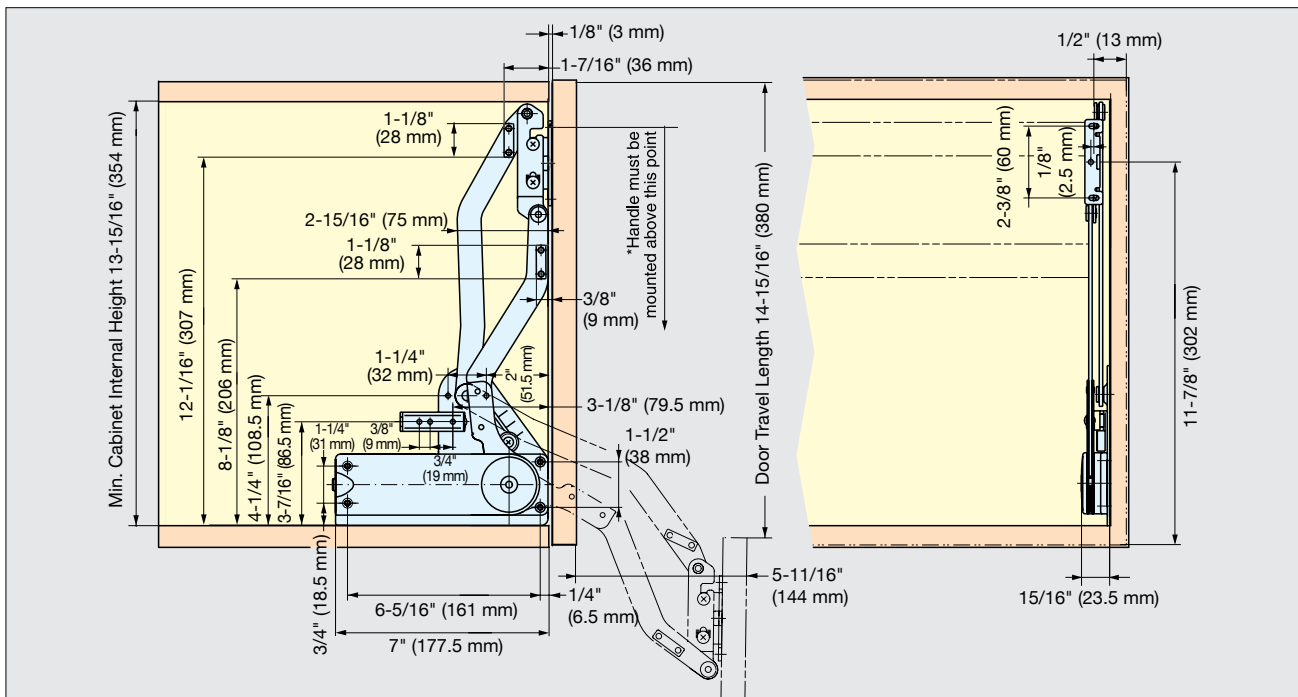
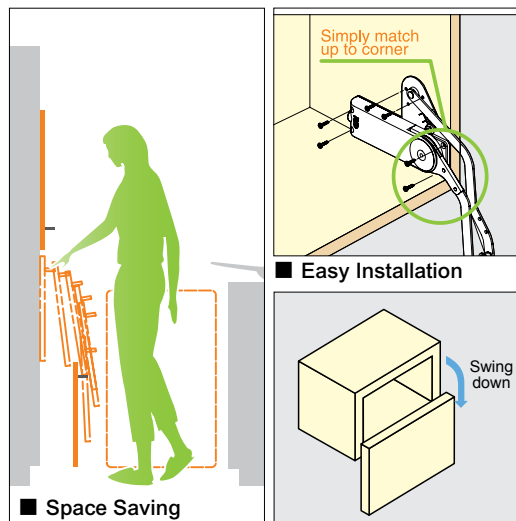
SLD

LID SUPPORTS

VERTICAL SWING DOWN MECHANISM



- Unique swing down mechanism will hold doors at the open position.
- Sleek & compact design.
- Easy installation.
- Adjustable arm mounting plate.
- Patented LAPCON technology provides a smooth and quiet motion.
- Successfully passed 30,000 open/close private cycle tests.
- Recommended Door Size and Weight:
  - Width, 23-5/8"~35-7/16" (600~900 mm)
  - Height, 14-1/8"~15-3/4" (360~400 mm)
  - Weight, 6.6~13.2 lbs (3~6 kg)



Material	Finish/Color
Steel	Nickel
Plastic	Grey

Item No	Door Weight	Box (set)	Carton (set)
SLD-3	6.6~8.8 lbs (3~4 kg)	5	50
SLD-4	8.8~11.0 lbs (4~5 kg)		
SLD-5	11.0~13.2 lbs (5~6 kg)		

Guide Bar Length

Door Type	Cabinet Width	
	23-5/8" (600 mm)	35-7/16" (900 mm)
Solid Wood Door	21-1/16" (535 mm)	32-7/8" (835 mm)
Frame Door	21-3/4" (551 mm)	33-1/2" (851 mm)

\*SLUB-835 (835 mm (32-7/8")) included unless specified.