

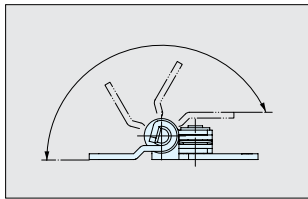
STAINLESS STEEL TORQUE HINGE



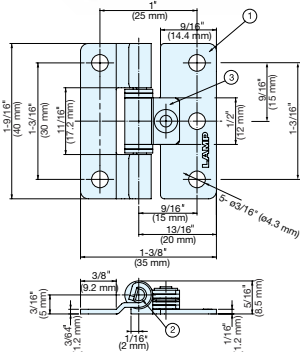
SFTH



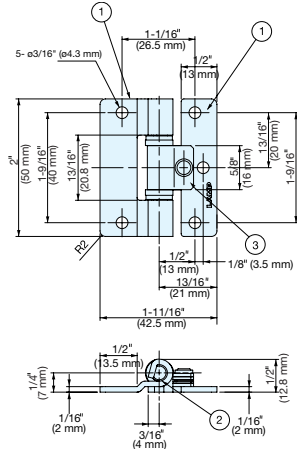
- Hinge with friction torque holds lid/door in desired position.
- Stainless steel construction for corrosive environments.
- Operating temperature: -4°F~140°F (-20°C~60°C)



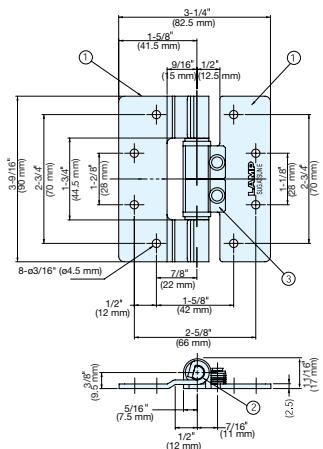
Applicable Torque Range



SFTH-02



SFTH-03



SFTH-05

Item No.	Torque per piece	Weight (g)	Box (pcs)	Carton (pcs)
SFTH-02-5	4.3 lbs·in (5 kgf·cm) ±1	21	50	500
SFTH-03-9	7.8 lbs·in (9 kgf·cm) ±2	51	30	300
SFTH-03-19	16.5 lbs·in (19 kgf·cm) ±2			
SFTH-05-35	30.4 lbs·in (35 kgf·cm) ±5	195	10	100
SFTH-05-58	50.3 lbs·in (58 kgf·cm) ±5			

No.	Part Name	Material	Finish
①	Body A	304 Stainless Steel	Polished
②	Shaft	303 Stainless Steel	
③	Body B	301 Stainless Steel	

COMBINATION HINGE



HG-VH8

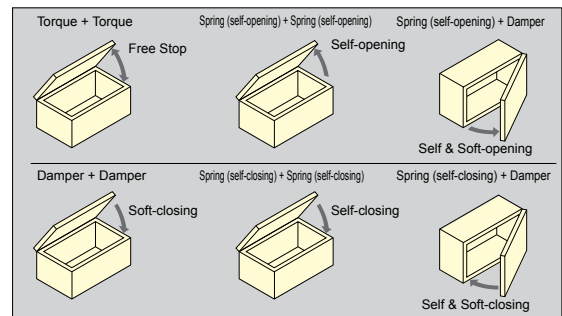
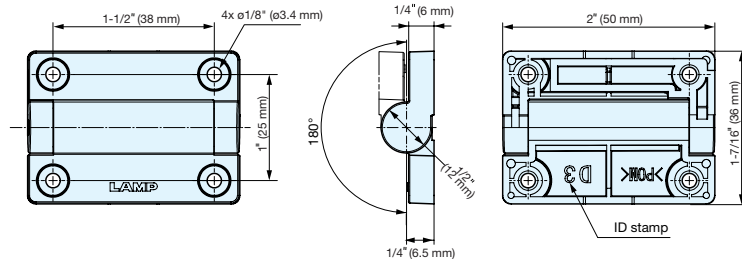


Black



White

- Hinges for light weight lids & doors.
- Various motions in same hinge case.
- Flexible combination.
- Lateral-opening door weight: Max.1.78 lbs (810 g)
Reference door size: W300×H450×t 5 mm
Acrylic plate, Density 1.2 g/cm³



Item No.	ID Stamp	Feature	Torque per piece	Opening angle	Material
HG-VH8-N-BL	N	Standard Movement	-	270°	Polyacetal
HG-VH8-N-WT					
HG-VH8-D3-BL	D3	Soft-Closing Damper	0.19~0.34 lbs·in (0.22~0.39 kgf·cm)		
HG-VH8-D3-WT					
HG-VH8-OP-BL	OP	Self-Opening Spring	0.14~0.56 lbs·in (0.16 kgf·cm~0.64 kgf·cm*)		
HG-VH8-OP-WT					
HG-VH8-CL-BL	CL	Self-Closing Spring			
HG-VH8-CL-WT					
HG-VH8-T15-BL	T1	Free Stop	1.33±0.44 lbs·in (1.53±0.51 kgf·cm)		
HG-VH8-T15-WT			3.10±0.89 lbs·in (3.57±1.02 kgf·cm)		
HG-VH8-T35-BL	T3				
HG-VH8-T35-WT					

*Increase of 0.16 kgf·cm for every 30° of rotation. Maximum rotation of 120°