

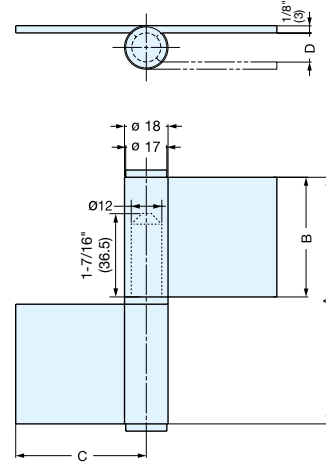
LIFT-OFF HINGE (WELD-ON)



S-6166-2



- Weld-on type stainless steel lift-off hinge.
- Left and Right handed available.
- Door weight: Max. 88 lbs/pair (40 kg/pair)



Material	Finish
304 Stainless Steel	Satin

Item No.		A	B	C	D	Weight (g)	Box (pcs)	Carton (pcs)
Left	Right							
S-6166-2-L	S-6166-2-R	4" (102)	1-5/16" (49.5)	2-3/16" (55)	1/2" (12)	300	12	60

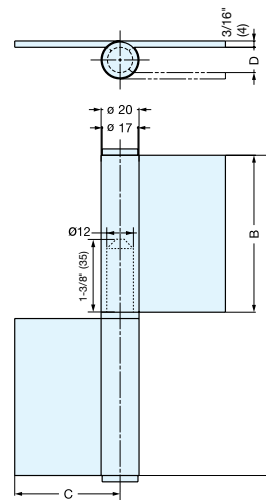
LIFT-OFF HINGE (WELD-ON)



S-6166-6



- Weld-on type stainless steel lift-off hinge.
- Left and Right handed available.
- Door weight: Max. 198 lbs/pair (90 kg/pair)



Material	Finish
304 Stainless Steel	Satin

Item No.		A	B	C	D	Weight (g)	Box (pcs)	Carton (pcs)
Left	Right							
S-6166-6-L	S-6166-6-R	6" (152)	2-15/16" (74.5)	2-3/16" (55)	1/2" (12)	570	8	40