

ROUND EDGE PULL

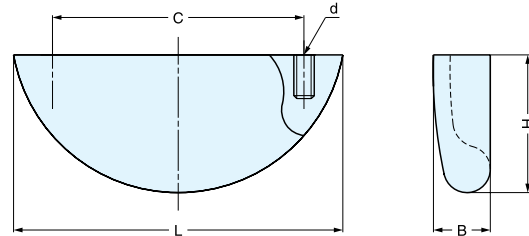


RD



RD-90/SM

RD-55/SM



Material	Finish
316 Stainless Steel	Mirror

Item No.	L	C	H	B	d	Weight (g)	Box (pcs)	Carton (pcs)
RD-55/SM	2-3/16" (55 mm)	1-5/8" (42 mm)	15/16" (23 mm)	3/8" (9.5 mm)	M4 x 0.7	50	30	360
RD-90/SM	3-9/16" (90 mm)	2-15/16" (74 mm)	1" (25.5 mm)	7/16" (10.5 mm)	M4 x 0.7	80	20	240

ROUND EDGE PULL



RD

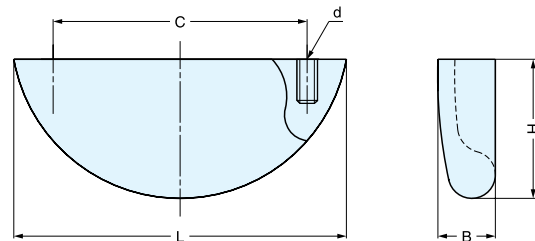


RD-90/CR
Chrome

RD-90/SB
Satin Brass

RD-45/SMK
Smoke

RD-55/SN
Satin Nickel



Material	Finish
Zinc Alloy	Smoke (SMK), Satin Nickel (SN) Polished Chrome (CR) Satin Brass (SB)

Please specify the finish when ordering.

Item No.	Finish	L	C	H	B	d	Weight (g)	Box (pcs)	Carton (pcs)	Screw
RD-45/CR	Chrome	1-3/4" (45 mm)	1-1/4" (32 mm)	3/4" (19 mm)	5/16" (8 mm)	M3 x 0.5	22	40	480	M3 x 25
RD-45/SB	Satin Brass									
RD-45/SMK	Smoke									
RD-45/SN	Satin Nickel									
RD-55/CR	Chrome	2-3/16" (55 mm)	1-5/8" (42 mm)	15/16" (23 mm)	3/8" (9.5 mm)	M4 x 0.7	35	30	360	M4 x 28
RD-55/SB	Satin Brass									
RD-55/SMK	Smoke									
RD-55/SN	Satin Nickel									
RD-90/CR	Chrome	3-9/16" (90 mm)	2-15/16" (74 mm)	1" (25.5 mm)	7/16" (10.5 mm)	M4 x 0.7	63	20	240	M4 x 28
RD-90/SB	Satin Brass									
RD-90/SMK	Smoke									
RD-90/SN	Satin Nickel									