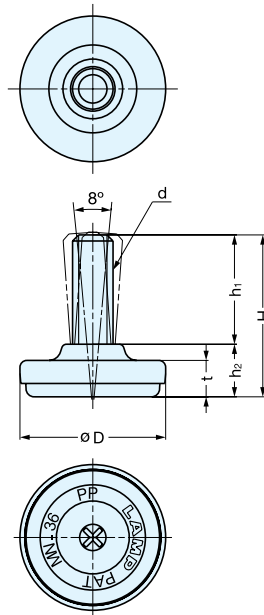


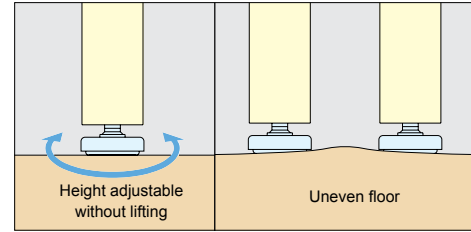
LEVELING GLIDE



MN



- Easy installation with phillips screw driver.
- Swivels approximately 8° to compensate for uneven floors.
- White polypropylene base to prevent floor damage.
- Include glide base.



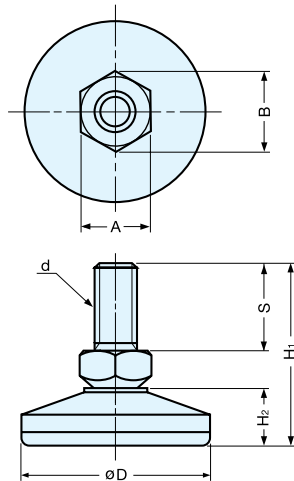
Part Name	Material	Finish
Cover	304 Stainless Steel	Satin
Bolt	Steel	Chrome
Base	Polypropylene	Natural

Item No.	D	H	h ₁	h ₂	t	d	Load Capacity	Weight (g)	Box (pcs)	Carton (pcs)
MN-25	31/32" (25 mm)	1-9/16" (40 mm)	1-1/16" (27 mm)	1/2" (13 mm)	11/32" (9 mm)	W5/16-18	264 lbs (120 kg) 352 lbs (160 kg)	26	100	600
MN-32	1-1/4" (32 mm)	1-9/16" (40 mm)	1-1/16" (27 mm)	1/2" (13 mm)	11/32" (9 mm)	W3/8-16		34	80	480
MN-36	1-13/32" (36 mm)	1-9/16" (40 mm)	1-1/16" (27 mm)	1/2" (13 mm)	11/32" (9 mm)	W3/8-16		39	60	360
MN-40	1-9/16" (40 mm)	1-9/16" (40 mm)	1-1/16" (27 mm)	1/2" (13 mm)	11/32" (9 mm)	W3/8-16		42	50	300
MN-50	1-31/32" (50 mm)	1-31/32" (50 mm)	1-11/32" (34 mm)	5/8" (16 mm)	7/16" (11 mm)	W1/2-12		77	20	120

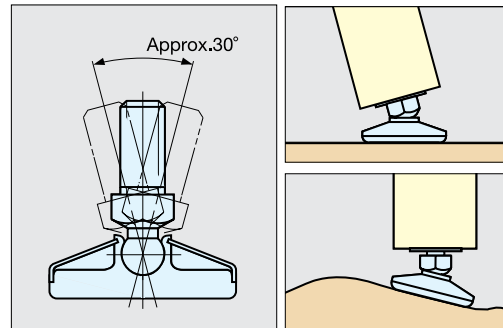
LEVELING GLIDE



RP



- Compensates for uneven of floors.
- Include glide base.



Part Name	Material	Finish
Base Cover	304 Stainless Steel	Satin
Bolt	Steel	Clear Zinc Chromate
Base	Polyamide	Natural

Item No.	A	D	B	H ₁	S	H ₂	d	Load Capacity	Weight (g)	Box (pcs)	Carton (pcs)
RP-25M6	5/16" (8 mm)	31/32" (25 mm)	3/8" (9.2 mm)	1-7/32" (31 mm)	9/16" (14 mm)	3/8" (9.7 mm)	M6x1.0	132 lbs (60 kg)	11	50	500
RP-30M8	3/8" (10 mm)	1-3/16" (30 mm)	7/16" (11.5 mm)	1-15/32" (37.5 mm)	3/4" (19 mm)	7/16" (11.2 mm)	M8x1.25	242 lbs (110 kg)	21	35	350
RP-30N25							W5/16.0				
RP-40M10	1/2" (13 mm)	1-9/16" (40 mm)	19/32" (15 mm)	1-21/32" (42.5 mm)	25/32" (20 mm)	17/32" (13.7 mm)	M10x1.5	352 lbs (160 kg)	38	25	250
RP-40N3							W3/8.0				
RP-50M12	21/32" (17 mm)	1-31/32" (50 mm)	25/32" (19.6 mm)	2" (51 mm)	31/32" (25 mm)	5/8" (16 mm)	M12x1.75	704 lbs (320 kg)	70	15	
RP-70M14	3/4" (19 mm)	2-3/4" (70 mm)	7/8" (22 mm)	2-5/8" (66.5 mm)	1-3/16" (30 mm)	31/32" (24.7 mm)	M14x2.0	1368 lbs (622 kg)	150	10	100