

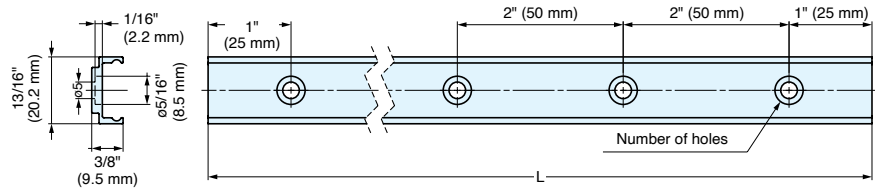
GUIDE RAIL



MLG20



• Recommended screw: Hexagon socket bolt M4



Item No.	L	No of Holes	Material	Finish	Weight (g)	Box (pcs)
MLG20-200	7-7/8" (200 mm)	4	Aluminum Alloy	Anodized Silver	36	200
MLG20-300	11-13/16" (300 mm)	6			54	100
MLG20-400	15-3/4" (400 mm)	8			72	50
MLG20-600	23-5/8" (600 mm)	12			108	?
MLG20-800	31-1/2" (800 mm)	16			144	?
MLG20-2000	78-3/4" (2000 mm)	40			359	?

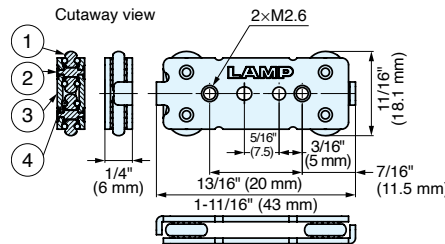
MULTI-ROLLER GUIDE BLOCK



MLG-20C



• Recommended screw: M2.6
(Max. length: sheet thickness + 3/16" (4 mm))



[Parts Included]
• #0-1 pan head screw M2.6 x 4

[Recommended Screw]
• Screw M4

Item No.	Weight (g)	Box (pcs)
MLG-20C	13	200

No.	Part Name	Material
①	Roller	Plastic
②	Pin	303 Stainless Steel
③	Plate	304 Stainless Steel
④	Ball	Steel

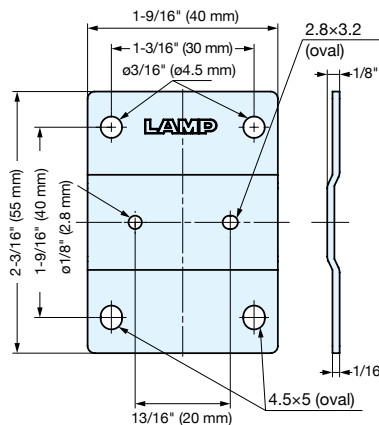
MOUNTING PLATE



MLG-20-P55-40



• Recommended screw: M4
• #0-1 pan head screw M2.6 x 4 included



Item No.	Material	Finish	Weight (g)	Box (pcs)
MLG-20-P55-40	304 Stainless Steel	Plain	26	100