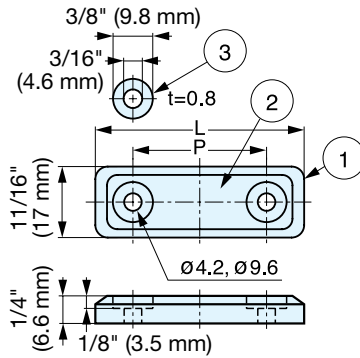


SEALED MAGNETIC CATCH



MC-MSH



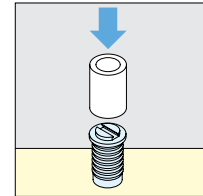
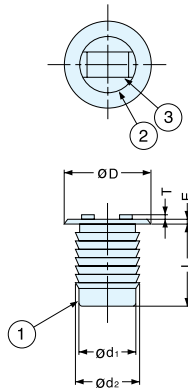
- Sealed with silicon rubber to reduce noise when door closes.
- Strong magnetic force.
- Optional counterplate sold separately
 - Stainless Steel - MCJM49, AS-68
 - Plastic Sealed - MC-JMP45
- Screws not included: M4 truss screw recommended.

No.	Part Name	Material	Finish/Color
①	Body	Silicone Rubber	Blue
②	Magnet	Neodymium	Nickel
③	Washer	304 Stainless Steel	Plain

Item No.	L	P	Magnetic Force	Weight (g)	Box (pcs)	Carton (pcs)
MC-MSH45BU	1-3/4" (45 mm)	1-1/16" (27 mm)	4.4 lbs (2 kg)	12	100	1000
MC-MSH50BU	2" (50 mm)	1-1/4" (32 mm)	8.8 lbs (4 kg)	15		

MAGNETIC CATCH

IS-4



Installation

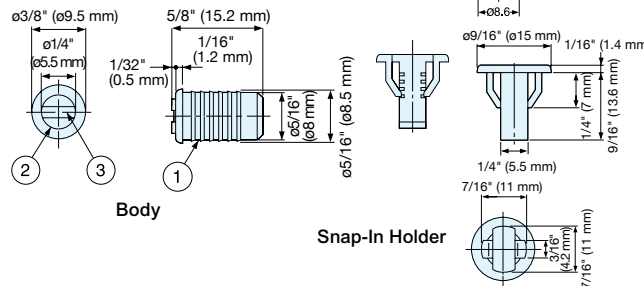
No.	Part Name	Material	Finish/Color
①	Housing	Polypropylene	White (WHT), Black (BLK)
②	Yoke	Steel	Yellow Zinc Chromate
③	Magnet	Ferrite	-

Item No.	D	L	E	T	d ₁	d ₂	Magnetic Force	Weight (g)	Box (pcs)	Carton (pcs)
IS-4/WHT	9/16" (14 mm)	9/16" (14 mm)	1/32" (0.7 mm)	1/16" (1.2 mm)	7/16" (11 mm)	1/2" (12 mm)	5.5 lbs (2.5 kg)	7.7	200	3000
IS-4/BLK										

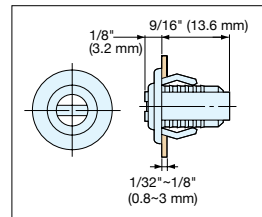
MAGNETIC CATCH (AND OPTIONAL SNAP-IN HOLDER)



NB01



- Snap-in holder for sheet metal 1/32" to 1/8" (0.8-3 mm).



■ Snap-In Holder (Optional)

Item No.	Weight (g)
NB01H	0.5

■ Main Body

Item No.	Magnetic Force	Weight (g)	Box (pcs)	Carton (pcs)
NB01/WHT	2.4 lbs (1.1 kg)	2	500	5000

No.	Part Name	Material	Finish/Color
①	Housing	Polyamide	White (WHT)
②	Yoke	Steel	Chromate
③	Magnet	Ferrite	-

Door Thickness (mm)	Cut Out Dimensions
0.8-1.4	Ø11.5
1.5-3.0	Ø12.0