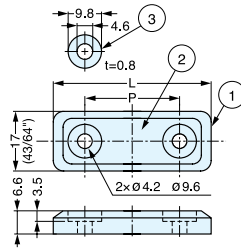


SEALED MAGNETIC CATCH



MC-MS45/50



- Sealed with silicon rubber to reduce noise when door closes.
- Strong magnetic force.
- Optional counterplate sold separately
 - Stainless Steel - MCJM49, AS-68
 - Plastic Sealed - MC-JMP45
- Screws not included: M4 truss screw recommended.

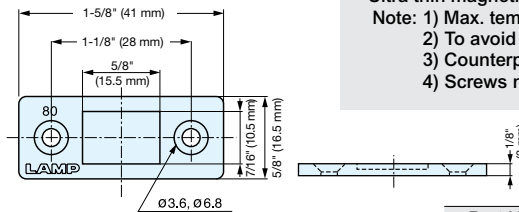
No.	Part Name	Material	Finish/Color
①	Body	Silicone Rubber	Light Gray/Dark Gray
②	Magnet	Neodymium	Nickel
③	Washer	304 Stainless Steel	Plain

Item No.	Body Color	L	P	Magnetic Force	Weight (g)	Box (pcs)	Carton (pcs)
MC-MS45LGR	Light Gray	1-3/4" (45 mm)	1-1/16" (27 mm)	4.4 lbs (2 kg)	12	100	1000
MC-MS45DGR	Dark Gray						
MC-MS50LGR	Light Gray	2" (50 mm)	1-1/4" (32 mm)	8.8 lbs (4 kg)	15	100	1000
MC-MS50DGR	Dark Gray						

ULTRA THIN & STRONG MAGNETIC CATCH



MC-159-8



- Ultra thin magnetic catch with extra strong magnetic force.
- Note: 1) Max. temperature: 80°C (176°F).
- 2) To avoid damage, counterplate should not hit magnet.
- 3) Counterplate MC-YN001U or MC-JM49 sold separately.
- 4) Screws not included; use M3 flat head or equivalent.

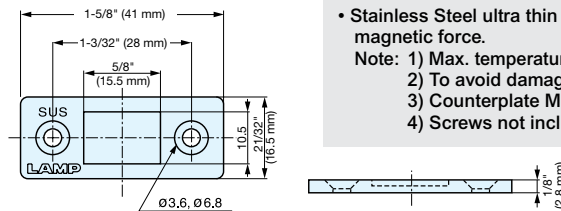
Item No.	Magnetic Force	Weight (g)	Box (pcs)	Carton (pcs)
MC-159-8	17.6 lbs (8 kg)	14	200	1000

Part Name	Material	Finish
Body	Steel	Nickel
Magnet	Neodymium	

ULTRA THIN STAINLESS STEEL MAGNETIC CATCH



MC-159-SUS



- Stainless Steel ultra thin magnetic catch with extra strong magnetic force.
- Note: 1) Max. temperature: 80°C (176°F).
- 2) To avoid damage, counterplate should not hit magnet.
- 3) Counterplate MC-YN001U or MC-JM49 sold separately.
- 4) Screws not included; use M3 flat head or equivalent.

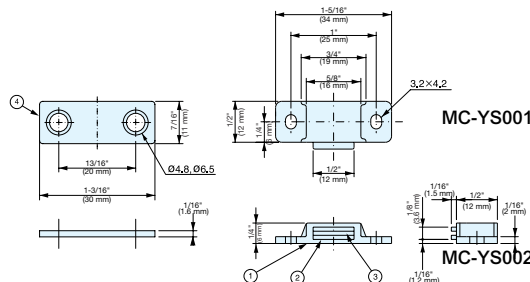
Item No.	Magnetic Force	Weight (g)	Box (pcs)	Carton (pcs)
MC-159-SUS	11.0 lbs (5 kg)	13	200	1000

Part Name	Material	Finish
Body	430 Stainless Steel	Nickel
Magnet	Neodymium	

MINI MAGNETIC CATCH



MC-YS



- Mini magnetic catch is ideal for tight spaces.
- Strong or light magnetic force available.

Item No.	Magnet	Magnetic Force	Weight (g)	Box (pcs)	Carton (pcs)
MC-YS001	Neodymium	6.6 lbs (3.0 kg)	6	100	1000
MC-YS002	Ferrite	2.6 lbs (1.2 kg)	5		

No.	Part Name	Material	Finish/Color
①	Housing	PBT	White
②	Yoke	Steel	Clear Zinc Chromate
③	Magnet	Neodymium	Nickel
④	Counterplate	Steel	Clear Zinc Chromate

No.	Part Name	Material	Finish/Color
①	Housing	PBT	White
②	Yoke	Steel	Clear Zinc Chromate
③	Magnet	Ferrite	-
④	Counterplate	Steel	Clear Zinc Chromate