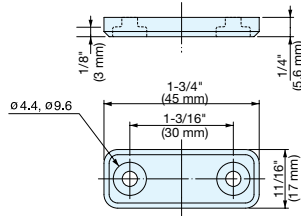


SEALED COUNTERPLATE



MC-JMP45



- Hermetically sealed strike eliminates metal particles when applied with MC-JM sealed magnetic catches.
- Same design as MC-JM45WT, MC-JM45BL- Blue marking on the back side to distinguish strike plate from magnet.
- Note: Only MC-JMPWT is NSF certified

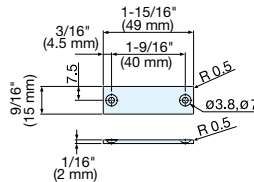
Item No.		Weight (g)	Box (pcs)	Carton (pcs)
MC-JMP45WT	MC-JMP45BL	8.5	100	1000

Part Name	Material	Finish/Color
Body	Polypropylene	White (WT)/Black (BL)
Plate	Steel	Plain

STAINLESS STEEL COUNTERPLATE



MC-JM49



- Special plate for MC-JM magnetic catches.
- Equivalent to 304 stainless steel, ideal for applications where rust is an issue.
- High corrosion resistant.

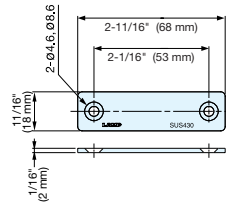
Item No.	Weight (g)	Box (pcs)	Carton (pcs)
MC-JM49	10	100	1000

Material	Finish
Stainless Steel	Plain

STAINLESS STEEL COUNTERPLATE



AS-68



- Special plate for MC-JM magnetic catches.
- 430 stainless steel provides corrosion resistance.

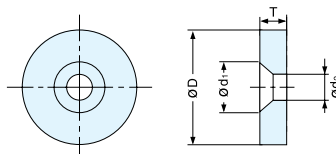
Item No.	Weight (g)	Box (pcs)	Carton (pcs)
AS-68	17	100	1000

Material	Finish
430 Stainless Steel	Plain

COUNTERPLATE



W SERIES

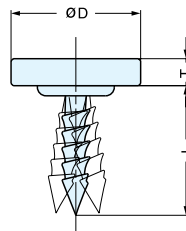


Item No.	T	D	d ₁	d ₂	Weight (g)	Box (pcs)	Carton (pcs)
W4	1/8" (2.5 mm)	1/2" (12 mm)	6	3.4	1.7	1000	10000
W12	1/8" (3 mm)	9/16" (15 mm)	8	4.0	3.3	600	3000

Material	Finish
Steel	Chromate (W4)
	Nickel (W12)

STRIKE

Z4



Item No.	T	D	L	Weight (g)	Box (pcs)	Carton (pcs)
Z4	1/8" (2.5)	15/32" (12 mm)	1/2" (12 mm)	2	1000	4000

Material	Finish
Steel	Nickel