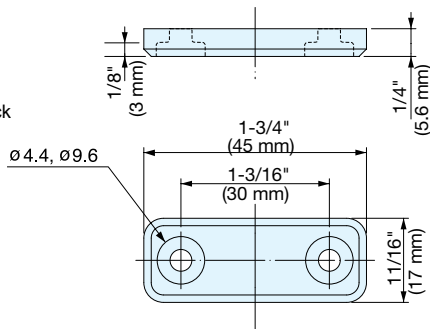


# SEALED MAGNETIC CATCH



## MC-JM45



- Hermetically sealed, ideal for high corrosion environments.
- No metal-to-metal contact, ideal for cleanroom applications.
- Strong magnetic force.
- Optional counterplate sold separately:
  - Stainless Steel - MC-JM49, AS-68
  - Plastic Sealed - MC-JMP45WT, MC-JMP45BL

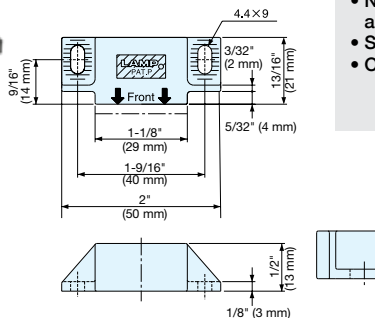
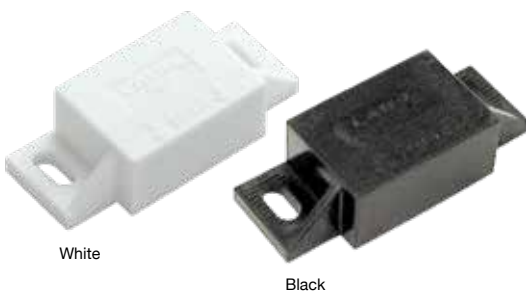
Item No.	Finish	Magnetic Force	Weight (g)	Box (pcs)	Carton (pcs)
MC-JM45WT	White	6.6 lbs (3 kg)	8.5	100	1000
MC-JM45BL	Black				

Part Name	Material	Finish/Color
Body	Polypropylene	White (WT)/Black (BL)
Magnet	Neodymium	-

# SEALED MAGNETIC CATCH



## MC-JM50



- Hermetically sealed, ideal for high corrosion environments.
- No metal-to-metal contact, ideal for cleanroom applications.
- Strong magnetic force.
- Optional counterplate sold separately:
  - Stainless Steel - MC-JM49, AS-68
  - Plastic Sealed - MC-JMP45

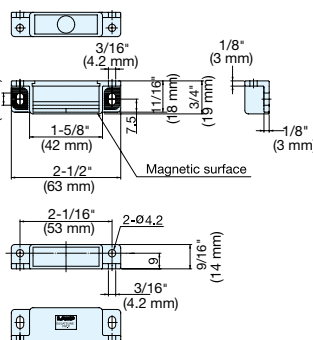
Item No.	Finish	Magnetic Force	Weight (g)	Box (pcs)	Carton (pcs)
MC-JM50WT	White	6.6 lbs (3 kg)	21	24	480
MC-JM50BL	Black				

Part Name	Material	Finish/Color
Body	Polyacetal	White (WT)/Black (BL)
Magnet	Neodymium	-

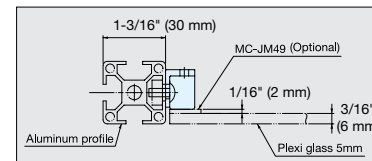
# SEALED MAGNETIC CATCH



## MC-JM63G



- Hermetically sealed, ideal for high corrosion resistance.
- No metal-to-metal contact, ideal for cleanroom application.
- Strong magnetic force.
- Optional counterplate:
  - Stainless Steel - MC-JM49, AS-68
  - Plastic Sealed - MC-JMP45



Item No.	Magnetic Force	Weight (g)	Box (pcs)	Carton (pcs)
MC-JM63G-15	3.3 lbs (1.5 kg)	20	50	500
MC-JM63G-30	6.6 lbs (3.0 kg)			
MC-JM63G-50	11.0 lbs (5.0 kg)			

Part Name	Material	Finish/Color
Body	Polyacetal	Light Grey
Magnet	Neodymium	-