

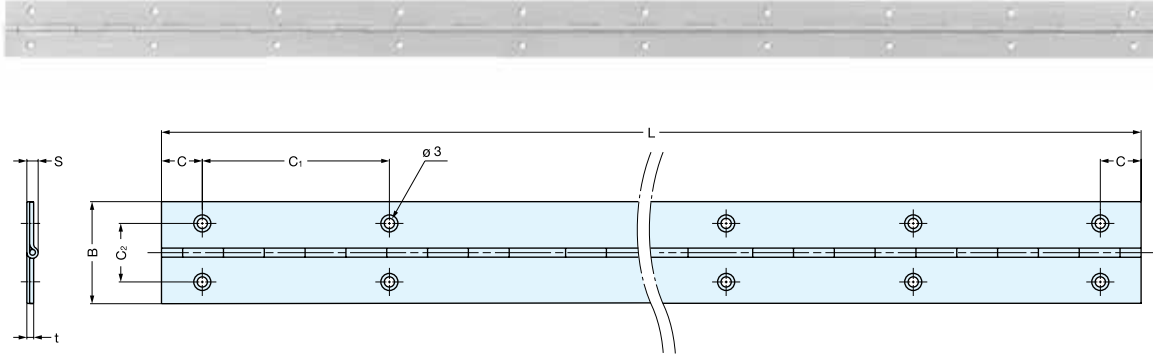
PIANO HINGE



LSD-30

HINGES

- Double folded construction provides extra rigidity.
- The knuckles on both ends are crimped to prevent the pin from being removed. The hinge pin does not occupy the crimped knuckles on both ends.



Material	Finish
304 Stainless Steel	Satin

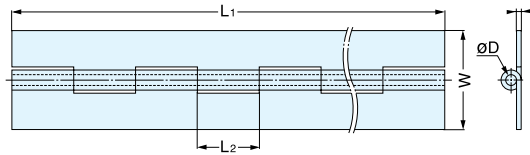
Item No.	L	B	C	C ₁	C ₂	t	S	Holes	Weight (g)	Box (pcs)	Carton (pcs)
LSD-30-240	9-7/16" (240 mm)	1-3/16" (30 mm)	7/16" (10.5 mm)	1-11/16" (43.5 mm)	11/16" (17 mm)	1/16" (1.2 mm)	1/8" (3.5 mm)	12	65	20	200
LSD-30-300	11-13/16" (300 mm)		9/16" (14.5 mm)	1-13/16" (46.3 mm)				14	80		
LSD-30-360	14-3/16" (360 mm)		9/16" (15 mm)	1-7/8" (47 mm)				16	95		
LSD-30-450	17-3/4" (450 mm)		9/16" (14.5 mm)	2-3/8" (60 mm)				16	120		
LSD-30-600	23-5/8" (600 mm)		9/16" (14 mm)	2-1/2" (63.3 mm)				20	190		
LSD-30-900	35-7/16" (900 mm)		9/16" (14 mm)	2-7/16" (62.3 mm)				30	280		

PIANO HINGES

PIANO HINGE (WELD-ON)



LSN



Item No.	L ₁	L ₂	W	t	D	Weight (g)	Box (pcs)	Carton (pcs)		
LSN8-25-300	11-13/16" (300 mm)	1/2" (12.5 mm)	1" (25 mm)	1/16" (0.8 mm)	1/8" (2.6 mm)	66	20	200		
LSN8-25-600	23-5/8" (600 mm)					135				
LSN8-25-1000	39-3/8" (1000 mm)					222				
LSN8-25-1800	70-7/8" (1800 mm)					400				
LSN8-32-300	11-13/16" (300 mm)					80				
LSN8-32-600	23-5/8" (600 mm)					159				
LSN8-32-1000	39-3/8" (1000 mm)	272	20	200						
LSN8-32-1800	70-7/8" (1800 mm)	492								
LSN8-38-1000	39-3/8" (1000 mm)	289								
LSN8-38-1800	70-7/8" (1800 mm)	542								
LSN15-32-300	11-13/16" (300 mm)	13/16" (20 mm)			1-1/4" (32 mm)	1/16" (1.5 mm)	1/8" (3.5 mm)	78	10	100
LSN15-32-350	13-3/4" (350 mm)							192		
LSN15-32-450	17-3/4" (450 mm)		248							
LSN15-32-600	23-5/8" (600 mm)		330							
LSN15-32-750	29-1/2" (750 mm)		410							
LSN15-32-850	33-7/16" (850 mm)		464							
LSN15-32-900	35-7/16" (900 mm)		498							
LSN15-32-1000	39-3/8" (1000 mm)		574	5	50					
LSN15-38-1000	39-3/8" (1000 mm)		615							
LSN15-38-1800	70-7/8" (1800 mm)		1121							
LSN15-50-1000	39-3/8" (1000 mm)		759							
LSN15-50-1800	70-7/8" (1800 mm)	1367								
LSN20-50-1000	39-3/8" (1000 mm)	2" (50 mm)	2" (50 mm)	1/16" (2 mm)	3/16" (5 mm)	774				



Material	Finish
304 Stainless Steel	Satin