

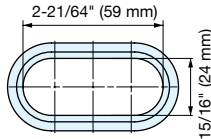
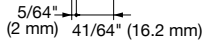
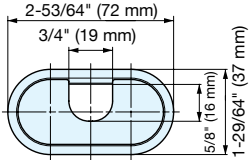
CABLE GROMMET

LN72D

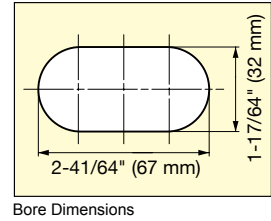
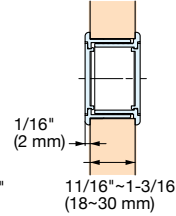
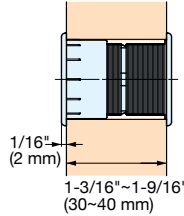


LN72D/WT

LN72D/BL



- Double-sided adjustable grommet
- For panel thickness 1-3/16" to 1-9/16" (30 to 40 mm); also for 23/32" to 1-3/16" (18 to 30 mm) by snapping off edge.
- Cover can be removed to increase the grommet opening.



Item No.	Color	Material	Weight (g)	Box (pcs)	Carton (pcs)
LN72D/WT	White	ABS	19	40	320
LN72D/BL	Black				

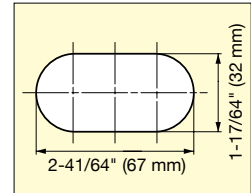
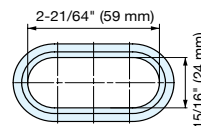
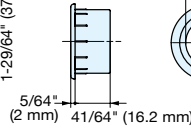
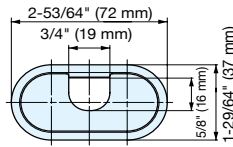
CABLE GROMMET

LN72S



LN72S/WT

LN72S/BL



- Cover can be removed to increase the grommet opening.

Item No.	Color	Material	Weight (g)	Box (pcs)	Carton (pcs)
LN72S/WT	White	ABS	8	40	320
LN72S/BL	Black				

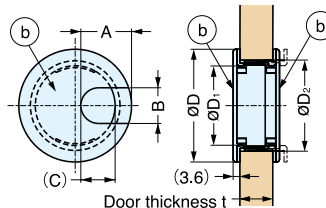
CABLE GROMMET

LSU, LS

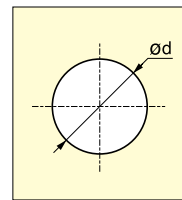


LSU60WHT

LSU60BLK



(b) are removable.



- Double-sided grommets.

Item No.	Finish	Material	D	D ₁	D ₂	A	B	C	t	d	Weight (g)	Box (pcs)	Carton (pcs)	
LSU60WT	White	ABS	2-3/8" (60 mm)	1-11/16" (42.5 mm)	1-15/16" (48.5 mm)	1-1/16" (27 mm)	3/4" (19 mm)	11/16" (18 mm)	1/2"~3/4" (12~18 mm)	1-15/16" (48.5 mm)	19	20	160	
LSU60BL	Black								3/4"~1" (18~24 mm)					
LS60WT	White		3" (76 mm)	2-5/16" (58.2 mm)	2-1/2" (64.2 mm)	1-5/16" (34 mm)	7/8" (22 mm)	1" (25.1 mm)	1"~1-9/16" (25~40 mm)	2-1/2" (64.2 mm)	25	12	96	
LS60BL	Black													
LS76WT	White													
LS76BL	Black													