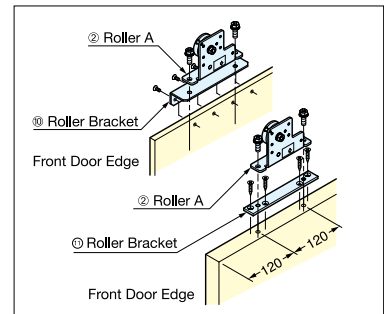
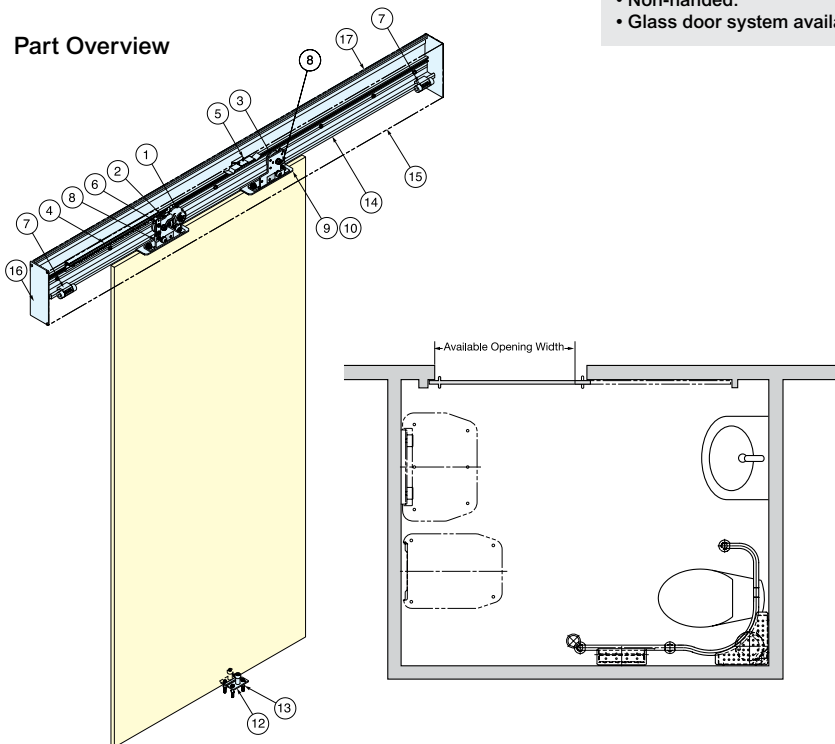




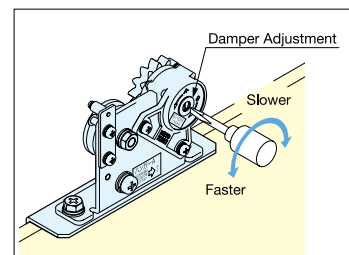
Item No.	LM-80
Door Width	27-9/16" ~47-1/4" (700~1200 mm)
Door Thickness	1/2" or 1-1/8"~1-9/16" (13 or 28~40 mm)
Door Weight	66~176 lbs/Door (30~80 kg/door)
Door Travel	Max. 43-5/16" (in case of door width 47-1/4") Max. 1100 mm (in case of door width 1200 mm)

- Self closing sliding door system.
- Equipped with damper for smooth and soft closing, eliminating slam shut.
- Dampening speed adjustable for best soft closing.
- Wall surface mount type for easy installation.
- No bottom rail needed for clean appearance.
- Door opens lightly for easy operation.
- Door catch included to hold door in fully open position.
- Designed for 1/2" (13 mm) solid phenolic panel or 1-1/8"~1-9/16" (28~40 mm) thick wood doors.
- Non-handed.
- Glass door system available (See P.571~572).

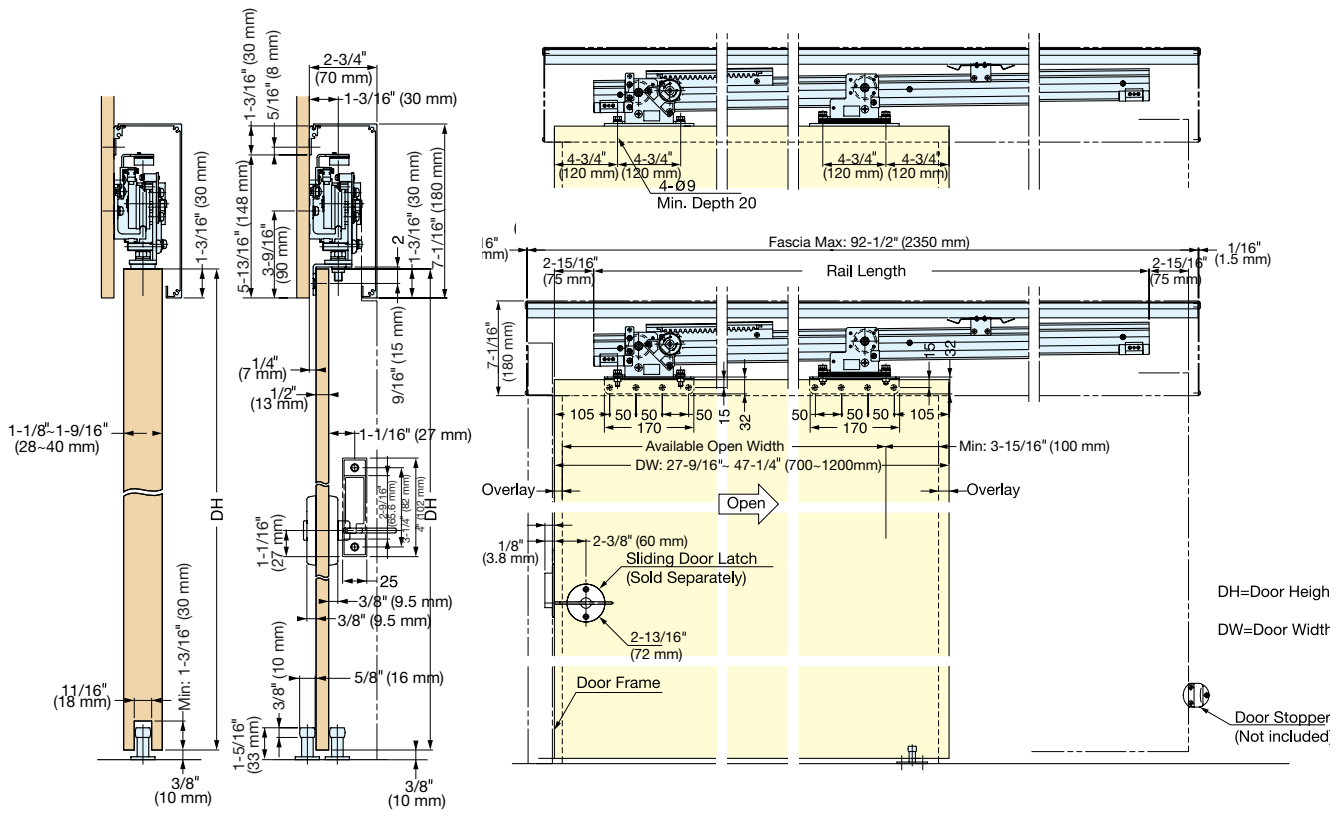
Part Overview



Roller Brackets for solid phenolic panel and wood door included.



Closing speed adjustable by turning adjustment screw on damper.



Part Details

No.	1	2	3	4	5	6	7
Name	Damper	Roller A	Roller B	Gear Rack	Spring	Stopper Roller	Door Stopper
Qty. / Set	1 pc	1 pc	1 pc	1 pc	1 pc	1 pc	2 pcs
No.	8	9	10	11	12	13	14
Name	Stopper Plate	Height Adjustment Spacer	Roller Bracket (For Solid Phenolic)	Roller Bracket (For Wood)	Bottom Roller Guide	Anchor	Roller Rail (2200 mm)
Qty. / Set	2 pcs	t1:15 pcs, t0.5:1 pc	2 pcs	2 pcs	2 pcs	4 pcs	1 pc
No.	15	16	17	No.	Option		
Name	Fascia (2350 mm)	Side Cover	Mounting Plate (For Fascia) (2350 mm)	Name	Latch w/indicator		
Qty. / Set	1 pc	1 pc ea. (Left & Right)	1 pc	Item No.	ET-125T		
Qty. / Set	1 pc	1 pc ea. (Left & Right)	1 pc	Qty. / Set	1 pc		