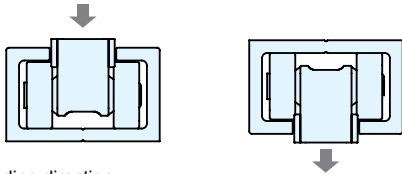
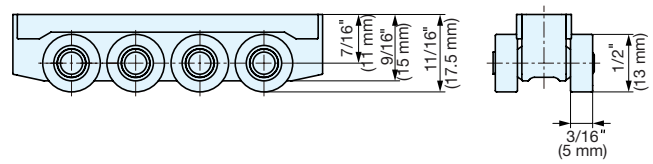
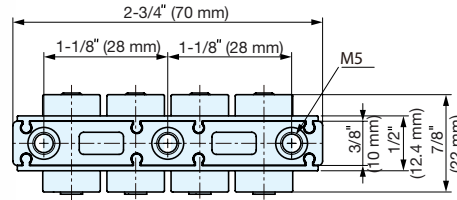


## ROLLER CARRIAGE



## LGB-30CM

- Slide roller carriage with bearing for smooth slide operation.
- To be used in the combination of LGB30 guide rail.



Loading direction  
Horizontal direction use only

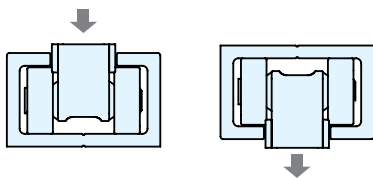
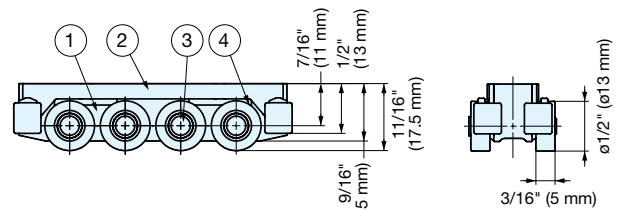
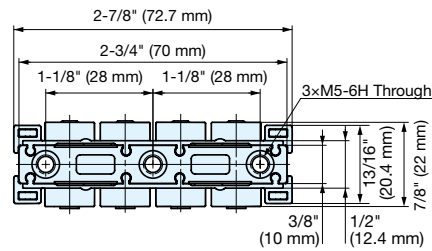
| Item No. | Load Capacity  | Weight (g) |
|----------|----------------|------------|
| LGB-30CM | 66 lbs (30 kg) | 76         |

| No. | Part Name | Material            | Finish |
|-----|-----------|---------------------|--------|
| ①   | Body      | Zinc Alloy          | Chrome |
| ②   | Plate     | Polyethylene        | Black  |
| ③   | Shaft     | 304 Stainless Steel | Plain  |
| ④   | Roller    | Steel/Polyacetal    | Black  |

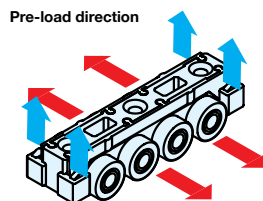
## ROLLER CARRIAGE (PRE-LOADED)

## LGB-30CB

- Linear guide roller carriage is pre-loaded in both directions for silent operation:
  - Reduces rattling between the carriage and the rail.
  - Ensures silent operation in both directions.
- To be used in combination with LGB30 guide rail.



Loading direction  
Horizontal direction use only



| Item No. | Load Capacity  | Weight (g) | Box (pcs) | Carton (pcs) |
|----------|----------------|------------|-----------|--------------|
| LGB-30CB | 66 lbs (30 kg) | 76         | 36        | 144          |

| No. | Part Name       | Material            | Finish              |
|-----|-----------------|---------------------|---------------------|
| ①   | Body            | Zinc Alloy          | Clear Zinc Chromate |
| ②   | Slide Protector | Polyethylene        | Black               |
| ③   | Roller Shaft    | 304 Stainless Steel | Plain               |
| ④   | Roller          | Steel/POM           | Black               |