

# HOOK

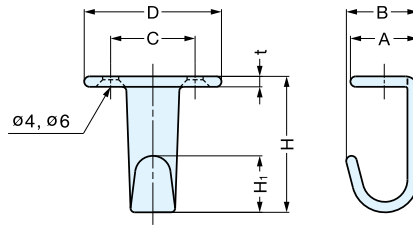


# HJ

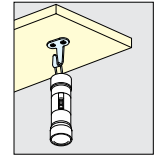


HJ-50

HJ-30SBL



• Ideal for undermount applications.



Installation

Material	Finish
304 Stainless Steel	Satin/Black (BL)

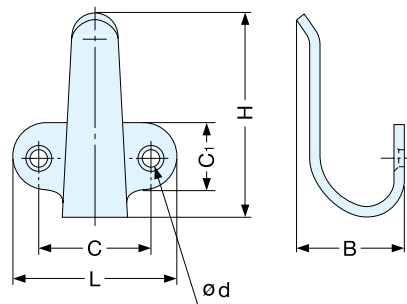
Item No.	D	C	H	H <sub>1</sub>	A	B	t	Load Capacity (kg)	Weight (g)	Box (pcs)	Carton (pcs)
HJ-20	1-1/8" (28.0)	11/16" (18)	1-1/16" (27.0)	7/16" (11.0)	1/2" (13)	11/16" (17)	1/8" (2.5)	22.0 lbs (10)	11	120	1200
HJ-20SBL											
HJ-30*	1-5/16" (33.0)	13/16" (20)	1-1/4" (32.5)	1/2" (13.5)	5/8" (16)			17.6 lbs (8)	15	30	600
HJ-30SBL											
HJ-50*	1-11/16" (43.5)	1-3/16" (30)	1-7/8" (47.0)	3/4" (19.6)	13/16" (21)	7/8" (22)		22.0 lbs (10)	30	40	800
HJ-50SBL											

(Units in mm \* NSF Component)

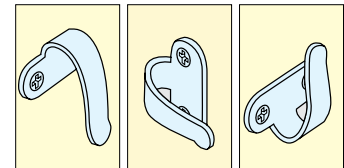
# HOOK



# 2H



• Unique design, also can be used as a pull.



Installation

Material	Finish
304 Stainless Steel	Satin

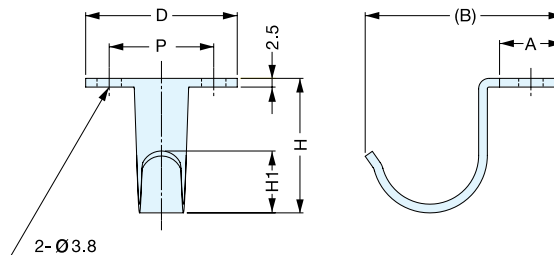
Item No.	L	C	C <sub>1</sub>	H	B	d	Load Capacity	Weight (g)	Box (pcs)	Carton (pcs)	Screw
2H-20	1-1/8" (28.0)	11/16" (18.0)	3/8" (10)	1-3/16" (30)	11/16" (18)	3/16" (4.62)	22.0 lbs (10 kg)	13	120	1200	3.1 × 16
2H-30	1-1/4" (32.5)	13/16" (20.0)	1/2" (13)	1-9/16" (39)				18	100	1000	
2H-40	1-3/8" (35.0)	7/8" (21.5)	5/8" (16)	1-3/4" (44)	15/16" (23)	3/16" (4.70)	13.2 lbs (6 kg)	23	80	800	3.5 × 16
2H-50	1-11/16" (43.0)	1-3/16" (30.0)	11/16" (18)	2-3/16" (56)	1" (25)			34	50	500	

(Units in mm)

# HOOK



# HJU



Material	Finish
304 Stainless Steel	Satin

Item No.	D	P	H	H <sub>1</sub>	A	B	Load Capacity	Weight (g)	Box (pcs)	Carton (pcs)
HJU-30S	1-1/4" (32.5)	13/16" (20)	1" (25.0)	1/2" (13)	1/2" (13)	1-5/8" (41.8)	17.6 lbs (8 kg)	15	30	600
HJU-50S	1-11/16" (43.5)	1-3/16" (30)	1-1/2" (38.5)	11/16" (18)	11/16" (18)	2-5/16" (59.0)	22.0 lbs (10 kg)	30	40	800

(Units in mm)