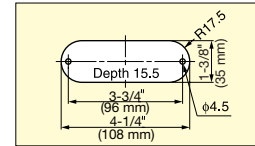
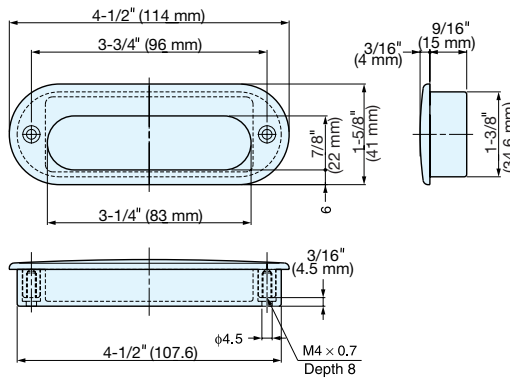


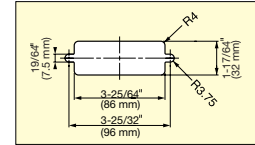
RECESSED PULL



HH-D



Bore Dimensions for wood panel.



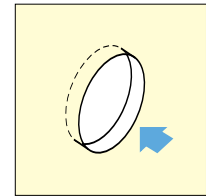
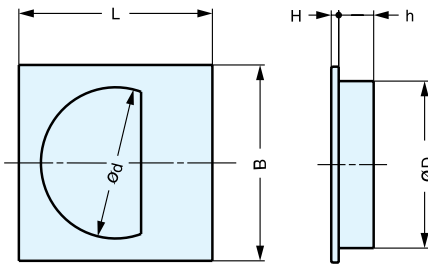
Cut Out Dimensions for sheet metal. Put sheet metal between front and back part for sheet metal applications. (Max. sheet metal thickness: 2 mm)

Item No.	Weight (g)	Box (pcs)	Carton (pcs)	Material	Finish/Color
HH-D	85	10	60	316 Stainless Steel	Mirror
				ABS	Black

RECESSED PULL



SP



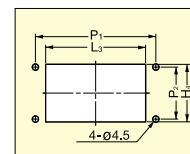
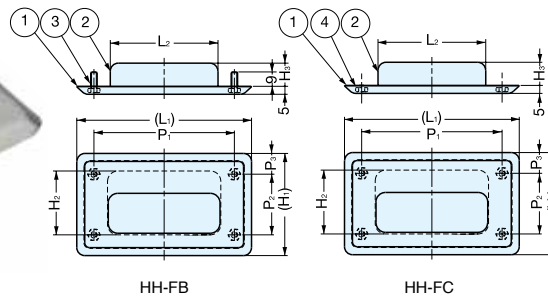
Material	Finish/Color
304 Stainless Steel	Satin (S)
Brass (SP-35/PB only)	Polished Brass (SP-35/PB)
Plastic	Black

Item No.	L	B	H	h	D	d	Weight (g)	Box (pcs)	Carton (pcs)
SP-35/S	1-3/4" (44 mm)	1-3/4" (44 mm)	1/16" (2.2 mm)	3/8" (9.8 mm)	1-3/8" (35.1 mm)	1-1/4" (31 mm)	10	100	1000
SP-38/S	1-7/8" (47 mm)	1-7/8" (47 mm)		7/16" (10.3 mm)	1-1/2" (37.6 mm)	1-5/16" (34 mm)	11	60	1440
SP-48/S	2-1/4" (57 mm)	2-1/4" (57 mm)		1-15/16" (48.6 mm)	1-3/4" (44 mm)	1-3/4" (44 mm)	16	50	1200
SP-35/PB	1-3/4" (44 mm)	1-3/4" (44 mm)		3/8" (9.8 mm)	1-3/8" (35.1 mm)	1-1/4" (31 mm)	10	100	1000

RECESSED PULL



HH-FB, HH-FC



Cut Out Dimensions

No.	Part Name	Material	Finish
①	Front Plate	304 Stainless Steel	Mirror (M) Satin (S)
②	Back Cover		
③	M4 Stud		
④	M4 Nut		

Item No.	Stud/Nut	(L ₁)	L ₂	L ₃	(H ₁)	H ₂	H ₃	H ₄	P ₁	P ₂	(P ₃)	Weight (g)	
HH-FB-1/M	HH-FB-1/S	M4 Stud	5-7/16" (138 mm)	3-3/4" (96 mm)	3-7/8" (99 mm)	3-7/16" (88 mm)	2-7/16" (62 mm)	13/16" (21 mm)	2-1/2" (64 mm)	4-5/16" (110 mm)	2-9/16" (65 mm)	7/16" (11.5 mm)	170
HH-FC-1/M	HH-FC-1/S	M4 Nut											
HH-FB-2/M	HH-FB-2/S	M4 Stud	4-5/16" (109.5 mm)	2-11/16" (67.5 mm)	2-7/8" (73 mm)	2-1/2" (64 mm)	1-9/16" (40 mm)	9/16" (14.5 mm)	1-5/8" (42 mm)	3-7/16" (88 mm)	1-1/2" (38 mm)	1/2" (13 mm)	100
HH-FC-2/M	HH-FC-2/S	M4 Nut											
HH-FB-3/M	HH-FB-3/S	M4 Stud	3-11/16" (94 mm)	2-3/8" (61 mm)	2-1/2" (63 mm)	2-3/8" (60 mm)	1-11/16" (43 mm)	1/2" (12 mm)	1-3/4" (45 mm)	3" (76 mm)	1-1/4" (32 mm)	9/16" (14.5 mm)	80
HH-FC-3/M	HH-FC-3/S	M4 Nut											