

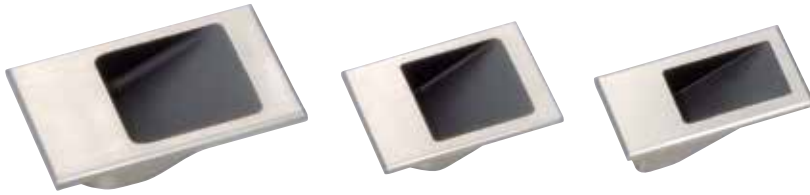
# RECESSED PULL



# HH-DN

HANDLES, PULLS & KNOBS

RECESSED PULLS



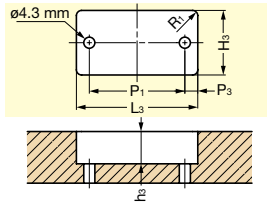
HH-DN-50WB

HH-DN-40WB

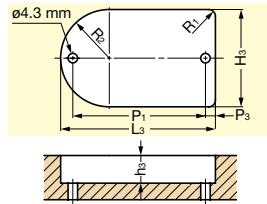
HH-DN-29WB

- Unique white bronze finish: nickel plating buffed to a satin finish and clear coated.
- Can be used on sheet metal when used with HH-DN-BKT bracket.
- The inside of the pull is painted in black which enhances the visibility of the pull and accentuates the beautiful border between the black color and white bronze finish.

### Installation on Wood

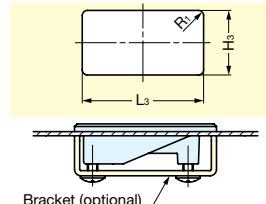


HH-DN-29WB / HH-DN-40WB

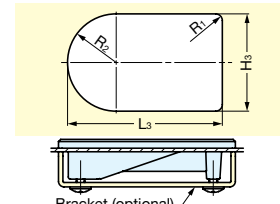


HH-DN-50WB

### Installation on Sheet Metal



HH-DN-29WB / HH-DN-40WB

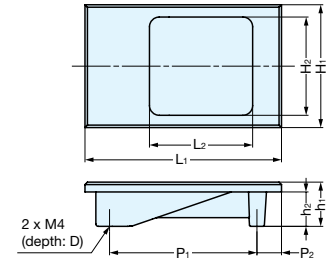


HH-DN-50WB

Item No.	L <sub>1</sub>	L <sub>2</sub>	H <sub>1</sub>	H <sub>2</sub>	h <sub>1</sub>	h <sub>2</sub>	P <sub>1</sub>
HH-DN-29WB	2-3/16" (55 mm)	1-1/4" (32 mm)	1-1/8" (29 mm)	13/16" (20 mm)	5/8" (15.5 mm)	1/2" (12.5 mm)	1-7/16" (37 mm)
HH-DN-40WB		1-1/4" (31.5 mm)	1-9/16" (40 mm)	1-1/4" (31.5 mm)			1-1/4" (32 mm)
HH-DN-50WB	3-1/8" (80 mm)	1-5/8" (42 mm)	2" (50 mm)	1-9/16" (40 mm)	11/16" (18 mm)	9/16" (14 mm)	2-3/8" (60 mm)

P <sub>2</sub>	D	L <sub>3</sub>	H <sub>3</sub>	P <sub>3</sub>	R <sub>1</sub>	R <sub>2</sub>	h <sub>3</sub>	Weight (g)	Box (pcs)	Carton (pcs)
7/16" (11 mm)	5/16" (8.5 mm)	1-7/8" (47 mm)	1" (25 mm)	3/16" (4 mm)	1/16" (2 mm)	-	1/2" (12.5 mm)	50	40	160
5/8" (16 mm)	1/4" (7 mm)	1-13/16" (46 mm)	1-7/16" (36 mm)	3/8" (10 mm)						
3/8" (10 mm)	3/16" (5 mm)	2-3/4" (70 mm)	1-3/4" (44 mm)	3/16" (4.5 mm)	1/8" (3 mm)	7/8" (22 mm)	9/16" (14 mm)	85	20	80



Material	Finish
Zinc Alloy	White Bronze

# BRACKET FOR SHEET METAL



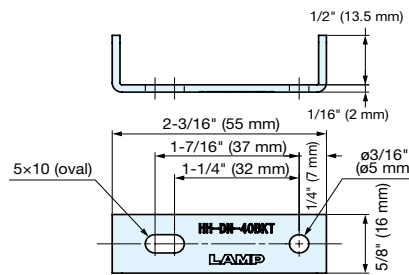
# HH-DN-BKT

- Easy installation from the backside.
- Screws not visible for a clean appearance.
- No welding needed.

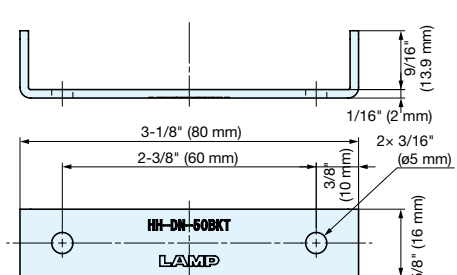


HH-DN-50BKT

HH-DN-40BKT



HH-DN-40BKT



HH-DN-50BKT

Item No.	Applicable Pull	Available Thickness	Weight (g)	Box (pcs)	Carton (pcs)
HH-DN-40BKT	HH-DN-29WB / HH-DN-40WB	1/32" ~ 1/16" (0.8 mm - 2.3 mm)	19	40	160
HH-DN-50BKT	HH-DN-50WB	1/32" ~ 1/8" (0.8 mm - 3.2 mm)	26		

Material	Finish
Steel	Colored Chromate