

# CLEAN ROOM HINGE (W/BUSHING)



## HG-CV

HINGES

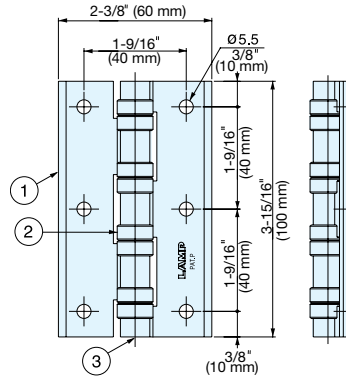
CLEAN ROOM HINGES / ALUMINUM LIFT-OFF HINGES



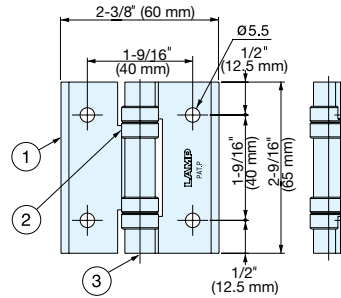
HG-CV65



HG-CV100



HG-CV100



HG-CV65

- No metal-to-metal contact.
- Polyacetal bushings minimize particles.
- Ideal for clean room application.
- Max. Door weight:  
HG-CV65: 17.6 lbs/pair (8 kg/pair)  
HG-CV100: 28.6 lbs/pair (13 kg/pair)

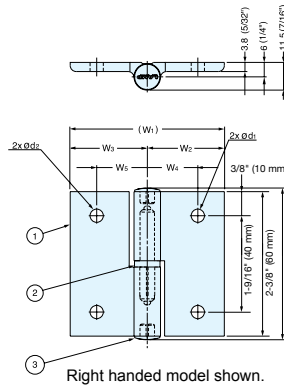
Item No.	Weight (g)	Box (pcs)	Carton (pcs)
HG-CV65	50	20	240
HG-CV100	78		160

No.	Part Name	Material	Finish
①	Body	Aluminum	Anodized
②	Bushing	Polyacetal	White
③	Hinge Pin	304 Stainless Steel	-

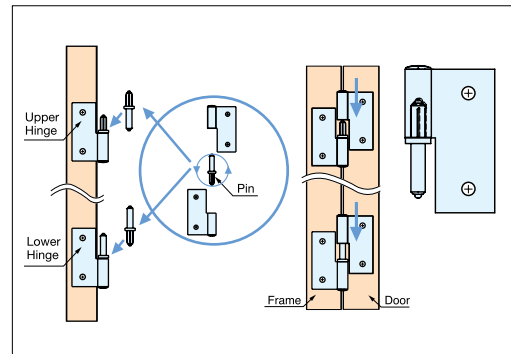
# ALUMINUM LIFT-OFF HINGES



## AS-HG-AL-N



- Designed for aluminum profiles.
- Plastic bushings provide smooth movement.



Installation

No.	Part Name	Material	Finish
①	Body	Aluminum	Matte Silver
②	Pin	Stainless Steel (SUS303), Polyacetal (POM)	White
③	Cover	Polyacetal (POM)	White

Item No.	Spec.	W <sub>1</sub>	W <sub>2</sub>	W <sub>3</sub>	W <sub>4</sub>	W <sub>5</sub>	d <sub>1</sub>	d <sub>2</sub>	Box (pcs)	Carton (pcs)			
AS-HG-AL-NL3020	Left	1-11/16" (43 mm)	11/16" (18 mm)	1" (25 mm)	7/16" (11 mm)	5/8" (16 mm)	3/16" (4.5 mm)	1/4" (5.5 mm)	20	240			
AS-HG-AL-NR3020	Right	2" (50 mm)	1" (25 mm)		5/8" (16 mm)		1/4" (5.5 mm)						
AS-HG-AL-NL3030	Left			2" (50 mm)	11/16" (18 mm)	13/16" (21 mm)	3/16" (4.5 mm)						
AS-HG-AL-NR3030	Right	2-1/4" (57 mm)	1" (25 mm)	7/16" (11 mm)	1/4" (5.5 mm)								
AS-HG-AL-NL3040	Left	2-1/4" (57 mm)	1" (25 mm)	1-1/4" (32 mm)	7/16" (11 mm)	13/16" (21 mm)	3/16" (4.5 mm)	1/4" (5.5 mm)	20	240			
AS-HG-AL-NR3040	Right	2" (50 mm)	11/16" (18 mm)		7/16" (11 mm)		3/16" (4.5 mm)						
AS-HG-AL-NL4020	Left	2" (50 mm)	11/16" (18 mm)	1-1/4" (32 mm)	13/16" (21 mm)	13/16" (21 mm)	1/4" (5.5 mm)				1/4" (5.5 mm)	20	240
AS-HG-AL-NR4020	Right	2-1/2" (64 mm)	1-1/4" (32 mm)		13/16" (21 mm)		1/4" (5.5 mm)						
AS-HG-AL-NL4040	Left	2-1/2" (64 mm)	1-1/4" (32 mm)	1-1/4" (32 mm)	13/16" (21 mm)	13/16" (21 mm)	1/4" (5.5 mm)	1/4" (5.5 mm)	20	240			
AS-HG-AL-NR4040	Right	2-1/2" (64 mm)	1-1/4" (32 mm)		13/16" (21 mm)		1/4" (5.5 mm)						