

GLASS DOOR BRACKET for HES3D-120



HES3D-G120BKT

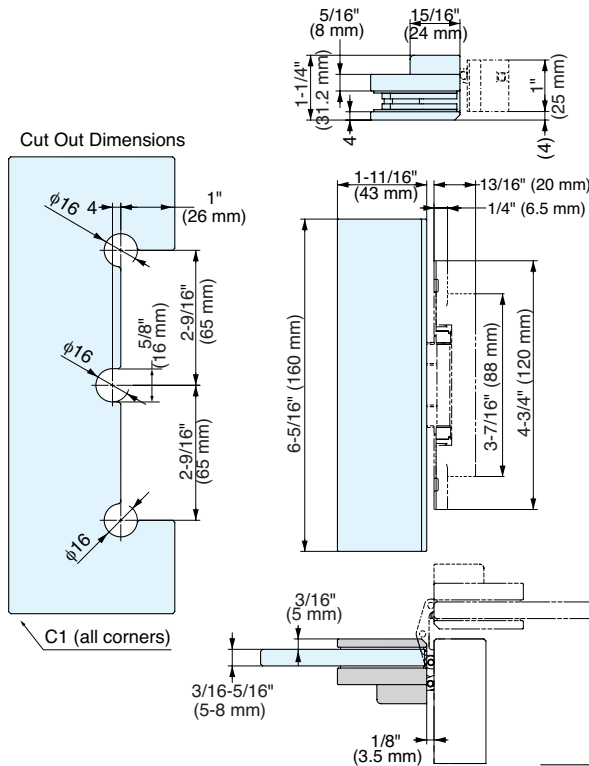


HES3D-G120BKT-CR
Chrome

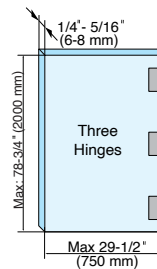
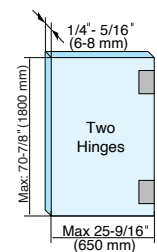
HES3D-G120BKT-GP
Gold

HES3D-G12Z0BKT-BL
Black

- Glass door bracket for HES3D-120 series.
- Hinge is completely hidden when looking through the glass.
- Screw covers match the bracket with the hinge finish.
- Glass thickness: 3/16"-5/16" (5-8 mm)



Door Dimensions and Number of Hinges



Item No.	Finish
HES3D-G120BKT-CR	Chrome
HES3D-G120BKT-GP	Gold
HES3D-G12Z0BKT-BL	Black

No.	Part Name	Material	Finish
①	Body	Zinc Alloy	Chrome, Gold Plating, Black
②	Back Plate		
③	Gasket	Chloroprene Rubber	
④	Screw Cover	ABS	
⑤	Hexagon Socket Countersunk Head	Steel	