

# 3-WAY ADJUSTABLE CONCEALED HINGE



# HES3D-70



HES3D-70DC  
Dull Chrome

HES3D-70DN  
Dull Nickel

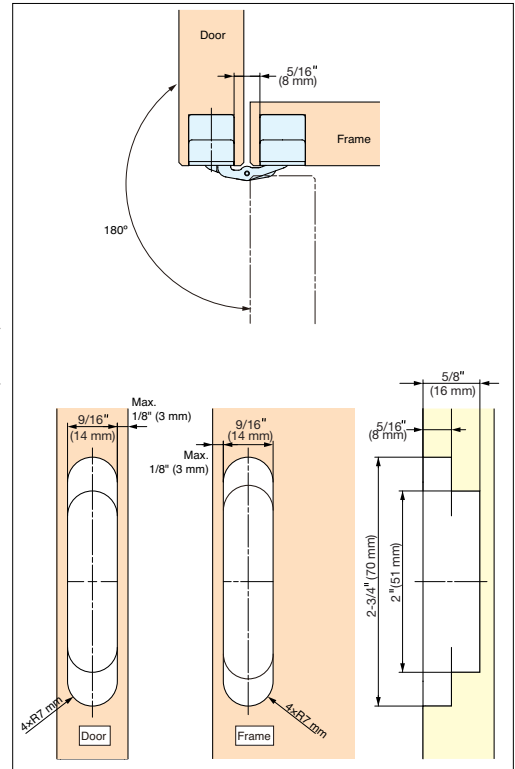
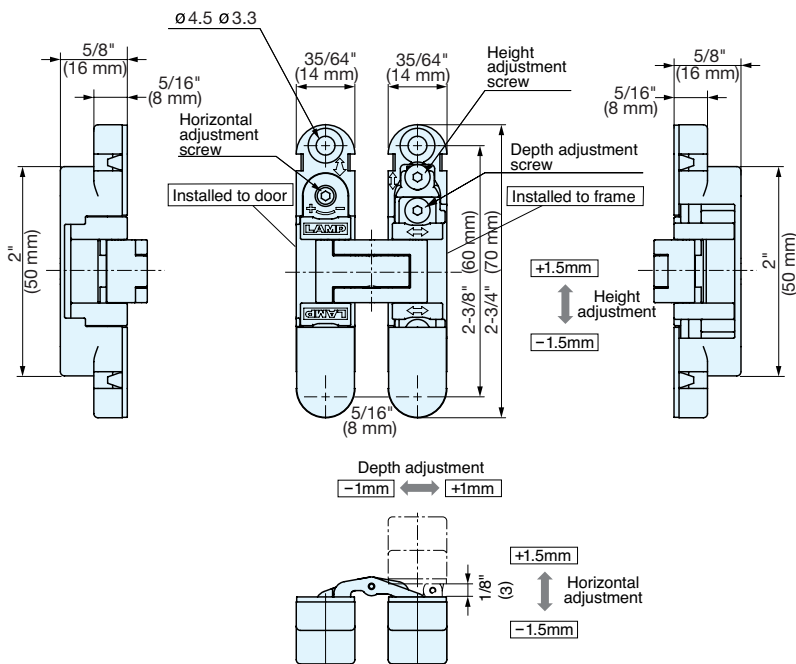
HES3D-70BL  
Black

- 3-WAY adjustment function allows vertical, horizontal and depth adjustment after installation.
- Hinge leaves separate for easy installation.
- Covers hide screw heads for clean appearance.
- Includes steel countersunk wood screws.
- Small size for min. 3/4" panel thickness.
- Max. Door weight: 19.8 lbs (9 kg)/2 pcs, 26.4 lbs (12 kg)/3 pcs
- Min. Door thickness: 3/4" (19 mm)
- Max. door size:  
H 47-1/4" x W 23-5/8" (H 1200 mm x W 600 mm)



HINGES

3-WAY ADJUSTABLE CONCEALED HINGES



Bore Dimensions

Item No.	Finish	Min. Door Thickness	Weight (g)	Box (pcs)	Carton (pcs)
HES3D-70DC	Dull Chrome	3/4" (19 mm)	95	2	48
HES3D-70DN	Dull Nickel				
HES3D-70BL	Black				

Part Name	Material
Body	Zinc Alloy
Base Frame	
Arm	Stainless Steel
Shaft (Pin)	
Cover	ABS