

# OFFSET WIRE PULL



H-75-C



H-75-C-128



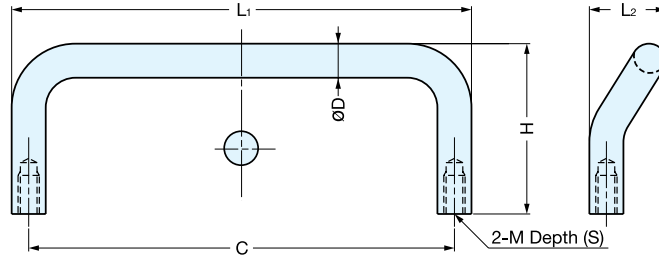
H-75-C-108



H-75-C-86



H-75-C-66



Material	Finish
304 Stainless Steel	Polished

Item No.	L <sub>1</sub>	L <sub>2</sub>	S	H	C	øD	M	Weight (g)	Box (pcs)	Carton (pcs)
H-75-C-66	2-5/8" (66 mm)	5/8" (16 mm)	1/4" (7 mm)	1-3/16" (30 mm)	2-3/8" (60 mm)	1/4" (6 mm)	M4	23	100	400
H-75-C-86	3-3/8" (86 mm)			1-1/4" (31.5 mm)	3-1/8" (80 mm)			28		
H-75-C-108	4-1/4" (108 mm)	11/16" (18 mm)	3/8" (10 mm)	1-1/4" (32 mm)	3-15/16" (100 mm)	5/16" (8 mm)	M5	54	50	200
H-75-C-128	5-1/16" (128 mm)			1-9/16" (40 mm)	4-3/4" (120 mm)			70		

# OFFSET WIRE PULL



LF-12



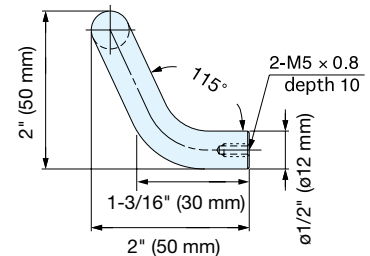
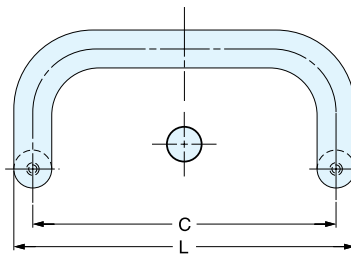
LF-12-160



LF-12-128



LF-12-96



Item No.	L	C	Weight (g)	Box (pcs)	Carton (pcs)
LF-12-96	4-1/4" (108 mm)	3-3/4" (96 mm)	182	10	80
LF-12-128	5-1/2" (140 mm)	5-1/16" (128 mm)	211		60
LF-12-160	6-3/4" (172 mm)	6-5/16" (160 mm)	236		

Material	Finish
304 Stainless Steel	Satin