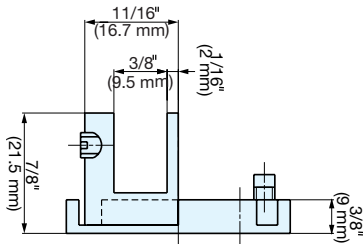


PIVOT TYPE INSET GLASS DOOR HINGE

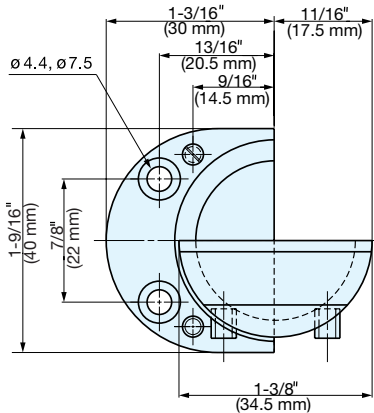


GP-40

HINGES

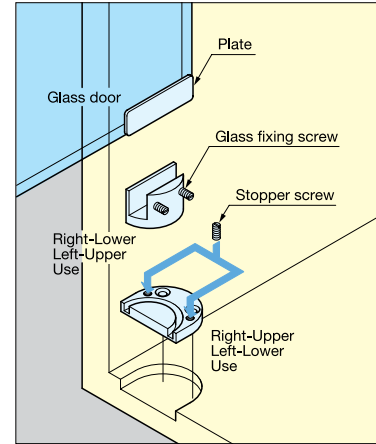


(side view)



(top view)

- Pressure-fit hinge.
- Glass door hinge for inset use.
- Door Size: Max. W17-3/4" × H27-9/16" × t5/16" (W450 × H700 × t8 mm)
- Door Weight: Max. 8.8 lbs/pair (4 kg/pair)
- Glass Door Thickness: Max. 5/16" (8 mm)
- Pre-drilling on glass not required.
- Non-handed.



Change the stopper screw position accordingly to install on left/right/top/bottom.

Item No.	Weight (g)	Box (pcs)	Carton (pcs)	Material	Finish
GP-40	76	35	350	Brass	Satin Nickel

PIVOT TYPE INSET GLASS DOOR HINGES / OVERLAY DOOR PIVOT HINGES

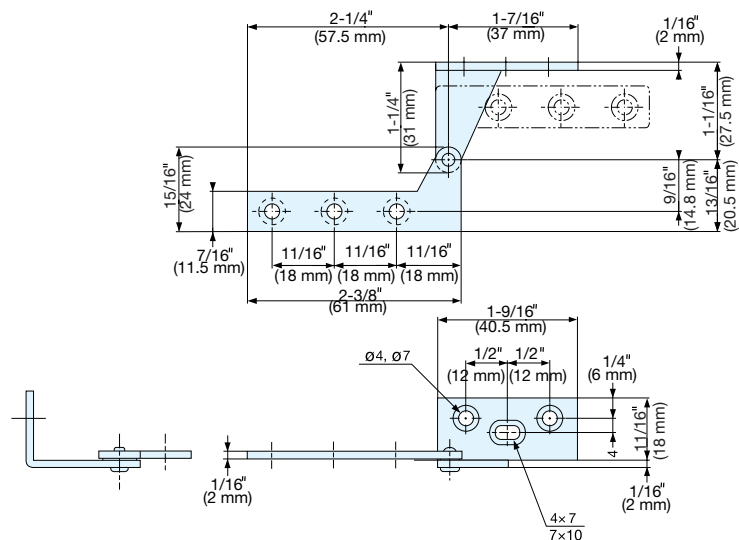
OVERLAY DOOR PIVOT HINGE



PL-60



Left handed model shown.



Left handed model shown.

- Door Size: Max. W17-3/4" × H27-9/16" × (t7/8"W450 × H700 × t22 mm)
- Door Weight: Max. 5.7 lbs/ pair (2.6 kg/pair)

Item No.		Weight (g)	Box (pcs)	Carton (pcs)	Material	Finish
Left	Right					
PL-60L	PL-60R	27	100	1000	430 Stainless Steel	Plain