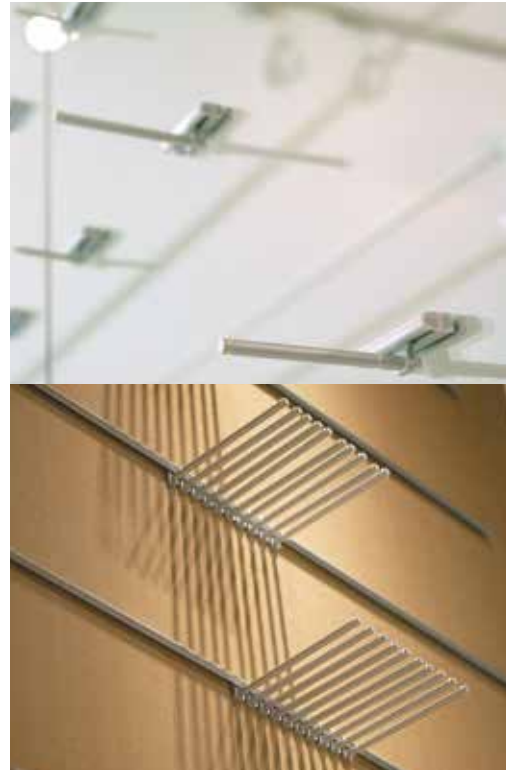




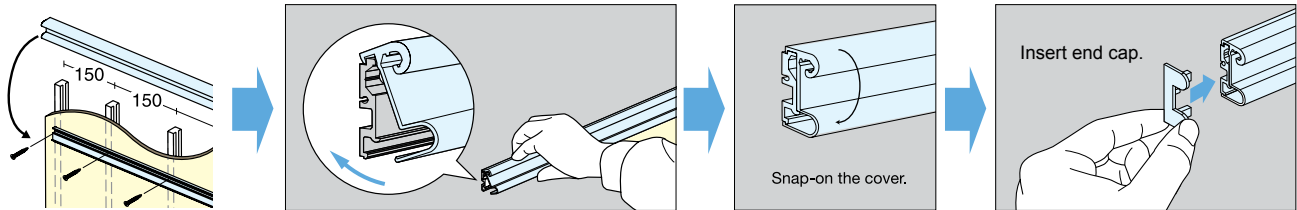
FLUQS 25



FLUQS ONE

FLUQS 25

Installation



FLUQS25 Part Details

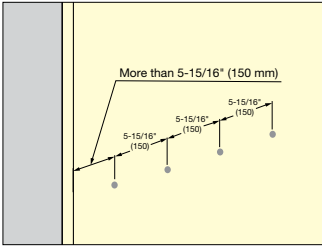
No.	Item No.	Part Name	Dimensions	Material	Finish/Color	Length	Description
①	EX022-21	FLUQS 25		Aluminum	Anodized	71-21/32" (1820 mm)	<ul style="list-style-type: none"> ● Single Aluminum Profile. ● Easy installation type ● End Cap 2 pcs included ● Screw hole pitch 150 mm
②	EX025-31	End Cap for FLUQS 25		ABS	Grey	-	<ul style="list-style-type: none"> ● Non-handed (2pcs per set)

Please see P.516~517 for accessories.

FLUQS ONE

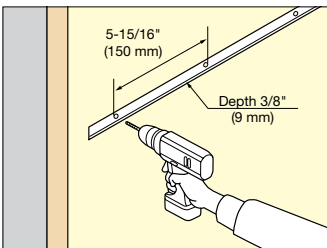
Installation

Glass/Acrylic, Surface Mount

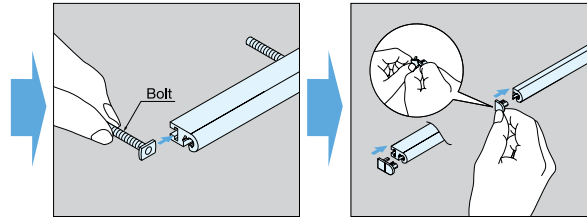


*Minimum Thickness:
Glass/Acrylic 10 mm
*Use accessories "For FLUQS ONE Surface Mount". (Please see P.569 for details)
When using other accessories, adaptor (sold separately) is required.

Wood Panel, Recess Mount

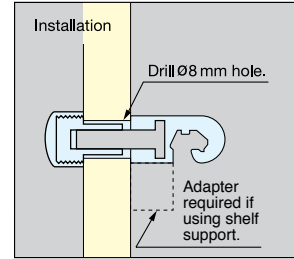


*Minimum Thickness:
Wood 24 mm

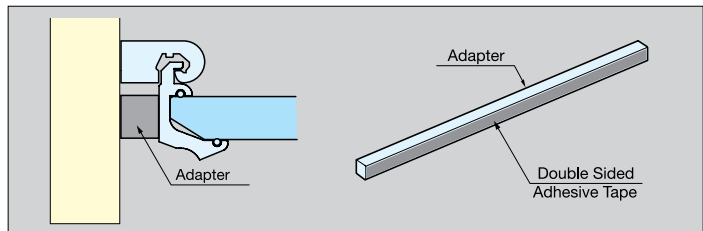
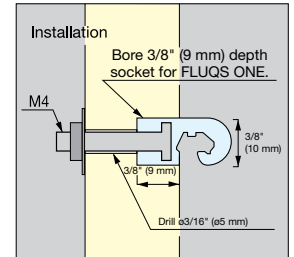


Adapter (sold separately) is required to attach shelves when FLUQS ONE is installed on a surface. (See p.517)

Plastic Panel



Wood Panel



FLUQS ONE Part Details

No.	Item No.	Part Name	Dimensions	Material	Finish/Color	Length	Description
①	EX012-21 EX010-21	FLUQS ONE		Aluminum	Anodized	31/32" (50 mm) 71-21/32" (1820 mm)	<ul style="list-style-type: none"> ● Single Aluminum Profile ● Simple and flexible layout design ● End Cap 2 pcs included ● For Recess Mount, cut the End Cap at the cut line and use the ※ 1 shape part. * Access behind the wall/panel is required to install.
②	EX018-45	End Cap for FLUQS ONE		Polypropylene	Plain	-	<ul style="list-style-type: none"> ● For Recess Mount, cut the End Cap at the cut line and use the ※ 2 shape part. (2 pcs per set)
③	EX019-25	FLUQS ONE Screw Set for Wood		Steel	Chromate	-	<ul style="list-style-type: none"> ● Fastener to attach FLUQS ONE to Wood Panel
④	EX020-20	FLUQS ONE Screw Set for Plastic Panel		Steel	Silver	-	<ul style="list-style-type: none"> ● Fastener to attach FLUQS ONE to Glass Panel

Please see P.516~517 for accessories.

ACCESSORIES

Hook Series (For FLUQS 250/750/25/ONE Recess Mount)

No.	Item No.	Part Name	Dimensions	Material	Finish/Color	Length	Load Capacity
①	EX030-20	Hook (ø3)		Steel	Chrome	19/32" (15 mm)	2.2 lbs (1 kg)
	EX031-20					1-3/16" (30 mm)	
	EX032-20					2-5/32" (55 mm)	
	EX030-07				Matte Silver	19/32" (15 mm)	
	EX031-07					1-3/16" (30 mm)	
	EX032-07					2-5/32" (55 mm)	
②	EX035-20	Hook (ø4)		Steel	Chrome	1-31/32" (50 mm)	2.2 lbs (1 kg)
	EX036-20					2-15/16" (75 mm)	
	EX037-20					3-15/16" (100 mm)	
	EX035-07				Matte Silver	1-31/32" (50 mm)	
	EX036-07					2-15/16" (75 mm)	
	EX037-07					3-15/16" (100 mm)	
③	EX040-20	Hook (ø6)		Steel	Chrome	1-31/32" (50 mm)	4.4 lbs (2 kg)
	EX041-20					3-15/16" (100 mm)	
	EX042-20					5-29/32" (150 mm)	
	EX040-07				Matte Silver	1-31/32" (50 mm)	
	EX041-07					3-15/16" (100 mm)	
	EX042-07					5-29/32" (150 mm)	
④	EX046-20	Hook (ø9)		Steel	Chrome	3-15/16" (100 mm)	6.6 lbs (3 kg)
	EX047-20					5-29/32" (150 mm)	
	EX048-20					7-7/8" (200 mm)	
	EX046-07				Matte Silver	3-15/16" (100 mm)	
	EX047-07					5-29/32" (150 mm)	
	EX048-07					7-7/8" (200 mm)	

SHELF & SUPPORT HARDWARE

WALL SHELVING SYSTEM

Shelf Series

No.	Item No.	Part Name	Dimensions	Material	Finish/Color	W	D	t	Description			
①	EX201-41	Acrylic Shelf Set		Aluminum (Bracket)	Anodized (Bracket)	11-13/16" (300 mm)	5-29/32" (150 mm)	3/8" (10 mm)	Load Capacity 5.3 lbs (2.4 kg)			
	EX202-41						7-7/8" (200 mm)					
	EX203-41						9-27/32" (250 mm)					
	EX206-41					Acrylic (Shelf)	Light Green (Shelf)		17-23/32" (450 mm)	5-29/32" (150 mm)	Load Capacity 7.9 lbs (3.6 kg)	
	EX207-41									7-7/8" (200 mm)		
	EX208-41									9-27/32" (250 mm)		
	EX211-41								23-5/8" (600 mm)	5-29/32" (150 mm)		Load Capacity 10.6 lbs (4.8 kg)
	EX212-41									7-7/8" (200 mm)		
	EX213-41									9-27/32" (250 mm)		
②	EX204-41	Adapter		Acrylic	-	11-13/16" (300 mm)	-	-	For Shelf Holder when used with FLUQS ONE surface mount profile and bracket (with double sided adhesive tape)			
	EX209-41					17-23/32" (450 mm)						
	EX214-41					23-5/8" (600 mm)						
③	EX026-21	Shelf Holder		Aluminum	Anodized	71-5/8" (1820 mm)	3/8" (10 mm)	11/32" (9 mm)	*For 3/8" (10 mm) glass *Maximum shelf depth: 9-13/16" (250 mm) *For permanent installation, apply caulk to bracket and glass/acrylic *1 rubber strip (clear, 1820 mm) included *Glass not included, chamfer required as shown Load Capacity 31.7 lbs (14.4 kg)			
④	EX027-21	Shelf Holder		Aluminum	Anodized	71-5/8" (1820 mm)	-	-	*For 3/8" (10 mm) glass *Maximum shelf depth: 17-3/4" (450 mm) *For permanent installation, apply caulk to bracket and glass/acrylic *1 clear rubber strip (1820 mm) included *Glass not included, chamfer required as shown Load Capacity 66 lbs (30 kg)			
⑤	EX271-21	Shelf Plate		Aluminum	Anodized	11-13/16" (300 mm)	-	-	Load Capacity 11 lbs (5 kg)			
	EX276-21					17-23/32" (450 mm)						
⑥	EX090-21	Mini Hook		Aluminum	Anodized	3/8" (10 mm)	-	-	Load Capacity 6.6 lbs (3 kg)			

*Additional end caps for shelf holders available by special order.