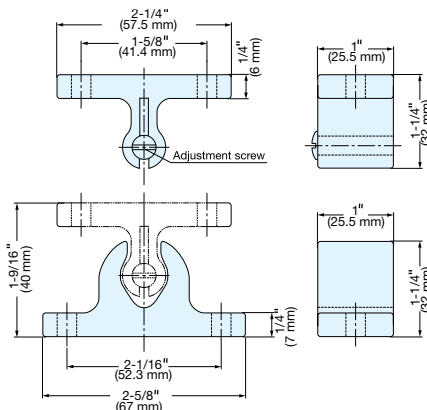
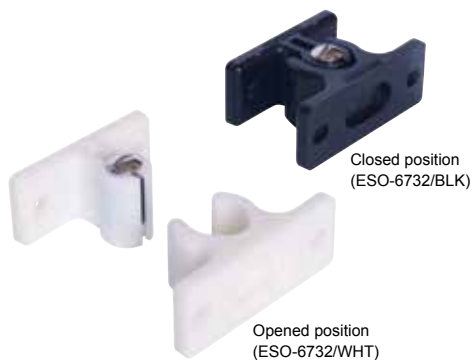


ADJUSTABLE KNUCKLE CATCH



ESO-6732

CATCHES & LATCHES



- Grabs and holds doors tightly.
- Strong catch force.
- Catch force is adjustable by turning adjustment screw.

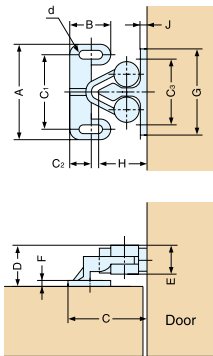
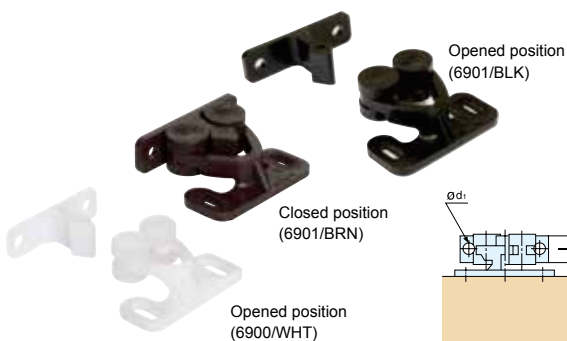
Item No.	Push in Force	Pulling Force	Weight (g)	Box (pcs)	Carton (pcs)
ESO-6732/WHT	29~57 lbs (13~26 kg)	18~44 lbs (8~20 kg)	42	20	200
ESO-6732/BLK					

Material	Color
Polyamide	White (WHT), Black (BLK)

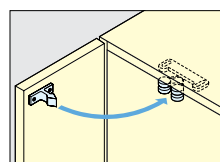
ROTARY CATCH



6900, 6901



- Grabs and holds doors tightly.



Installation

* Please specify color when ordering.

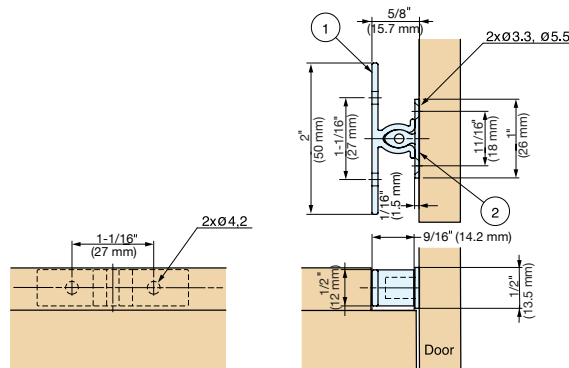
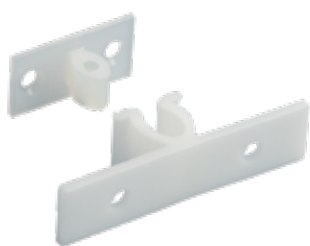
Part Name	Material	Color
Catch	Polyacetal	White (WHT) Brown (BRN)**
Strike		Black (BLK)**
Roller	Polyethylene	**6901 only

Item No.	Push in Force	Pulling Force	A	B	C	D	E	F	C ₁	C ₂	C ₃	G	H	I	J	d	d ₁	Weight (g)	Box (pcs)	Carton (pcs)
6900/WHT	2.4 lbs (1.1 kg)	3.5 lbs (1.6 kg)	1-1/8" (29 mm)	1/2" (12)	13/16" (21.2)	7/16" (11.3)	5/16" (8)	1/16" (2.0)	7/8" (21.5)	1/4" (6.0)	13/16" (20.0)	1" (26)	1/2" (13.5)	5/16" (7.5)	1/16" (1.7)	3.1x7	1/8" (3.0)	3	100	2000
6901/WHT	4.8 lbs (2.2 kg)	7.0 lbs (3.2 kg)	1-1/4" (31.3 mm)	9/16" (14)	1-1/16" (27.2)	1/2" (12.6)	3/8" (9)	1/16" (2.3)	15/15" (24.4)	5/16" (7.5)	15/16" (23.6)	1-1/4" (32)	5/8" (16.5)	3/8" (9)	1/16" 2.0	3.1x7	1/8" (3.1)	4	100	2000
6901/BRN																				
6901/BLK																				

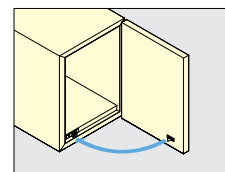
KNUCKLE CATCH



JC-T50



- Grabs and holds doors tightly.



Item No.	Push in Force	Pulling Force	Weight (g)	Box (pcs)	Carton (pcs)
JC-T50	6.6 lbs (3.3 kg)	8.3 lbs (3.8 kg)	3	50	500

Part Name	Material	Color
Catch	Polyacetal	White (WHT)
Strike	Polyamide	Natural White

ADJUSTABLE KNUCKLE CATCHES / ROTARY CATCHES / KNUCKLE CATCHES