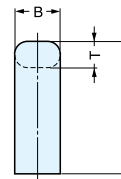
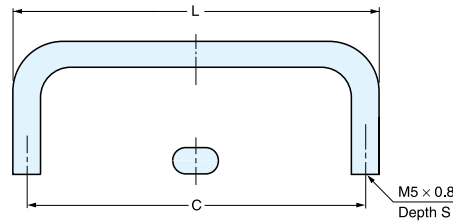


HANDLE



ECH



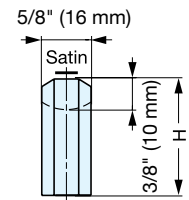
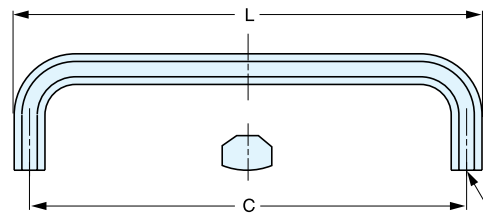
Material	Finish
303 Stainless Steel	Mirror (M) Satin (S)

Item No.	L	C	H	B	T	S	Weight (g)	Box (pcs)	Carton (pcs)	
ECH-75/M	ECH-75/S	3-1/4" (83 mm)	2-15/16" (75 mm)	1-9/16" (40 mm)	9/16" (14 mm)	5/16" (8 mm)	7/16" (11 mm)	115	10	100
ECH-100/M	ECH-100/S	4-1/4" (108 mm)	3-15/16" (100 mm)					135	15	150
ECH-125/M	ECH-125/S	5-1/4" (133 mm)	4-29/32" (125 mm)	2" (50 mm)	9/16" (14 mm)	5/16" (8 mm)	7/16" (11 mm)	153	10	100
ECH-150/M		6-1/4" (158 mm)	5-15/16" (150 mm)					190	7	70
ECH-200/M		8-3/16" (208 mm)	7-7/8" (200 mm)					244	10	100
ECH-250/M		10-3/16" (258 mm)	9-13/16" (250 mm)					280	5	50
ECH-300/M		12-1/8" (308 mm)	11-13/16" (300 mm)	306						

HANDLE



XL-CU



M5 x 0.8
Depth 15

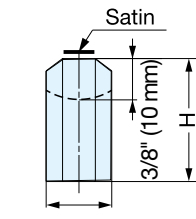
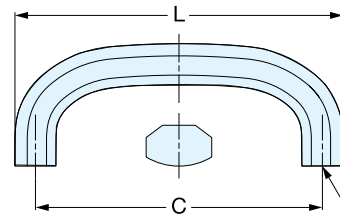
Item No.	L	C	H	Weight (g)	Box (pcs)	Carton (pcs)
XL-CU80TT	3-1/4" (82 mm)	2-13/16" (72 mm)	1-1/4" (32 mm)	112	10	100
XL-CU100TT	4" (102 mm)	3-5/8" (92 mm)	1-5/16" (34 mm)	136		
XL-CU120TT	4-13/16" (122 mm)	4-7/16" (112 mm)	1-7/16" (36 mm)	163		
XL-CU150TT	6" (152 mm)	5-9/16" (142 mm)	1-1/2" (38 mm)	200	8	80
XL-CU180TT	7-3/16" (182 mm)	6-3/4" (172 mm)	1-9/16" (40 mm)	234		
XL-CU220TT	8-3/4" (222 mm)	8-3/8" (212 mm)	1-5/8" (42 mm)	282	6	40
XL-CU300TT	11-7/8" (302 mm)	11-1/2" (292 mm)	1-3/4" (44 mm)	372		

Material	Finish
303 Stainless Steel	Mirror and Satin Combination

HANDLE



XL-CUR



2-M5x0.8
Depth 8

Item No.	L	C	H	Weight (g)	Box (pcs)	Carton (pcs)
XL-CUR80TT	3-1/8" (80 mm)	2-3/4" (70 mm)	1-1/16" (30 mm)	101	10	150
XL-CUR100TT	3-15/16" (100 mm)	3-9/16" (90 mm)	1-1/4" (32 mm)	125		
XL-CUR120TT	4-3/4" (120 mm)	4-5/16" (110 mm)	1-5/16" (34 mm)	150	5	75
XL-CUR150TT	5-15/16" (150 mm)	5-1/2" (140 mm)	1-7/16" (36 mm)	183		

Material	Finish
303 Stainless Steel	Mirror and Satin Combination