

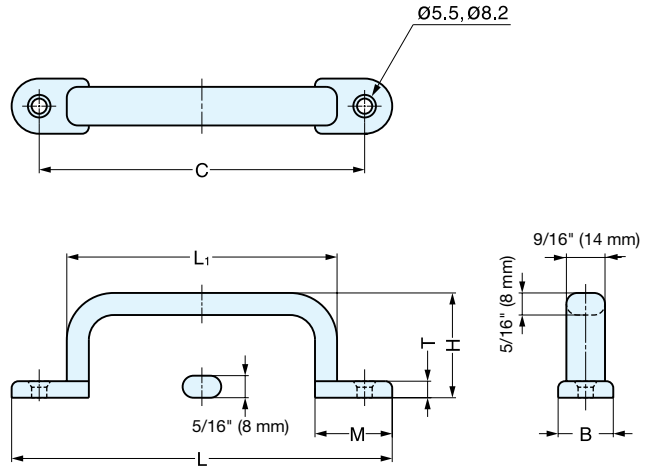
# HANDLE



# EC-Y

HANDLES, PULLS & KNOBS

HANDLES



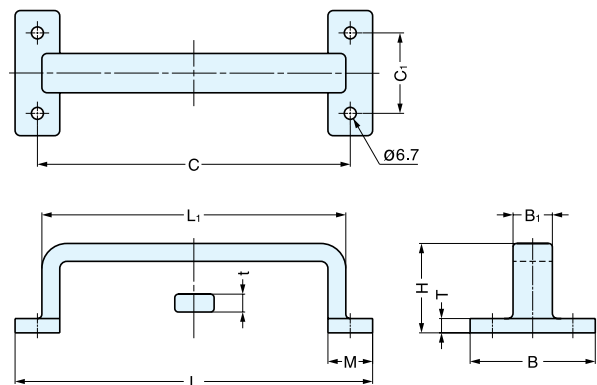
Material	Finish
303 Stainless Steel	Mirror

Item No.	L	L <sub>1</sub>	C	B	H	T	M	Weight (g)	Box (pcs)	Carton (pcs)
EC-Y-140	5-7/16" (138 mm)	3-15/16" (100 mm)	4-3/4" (120 mm)	13/16" (20 mm)	1-1/2" (38 mm)	1/4" (6 mm)	1-1/8" (28 mm)	142	5	50
EC-Y-160	6-1/4" (158 mm)	4-3/4" (120 mm)	5-1/2" (140 mm)		1-9/16" (40 mm)			160	3	30
EC-Y-190	7-3/8" (188 mm)	5-15/16" (150 mm)	6-11/16" (170 mm)		1-5/8" (42 mm)			185	2	20

# LARGE TRANSOM HANDLE



# FT-200, 280



Material	Finish
316 Stainless Steel	Mirror

Item No.	L	L <sub>1</sub>	C	C <sub>1</sub>	B <sub>1</sub>	B	H	T	t	M	Weight (g)	Box (pcs)	Carton (pcs)
FT-200	7-7/8" (200 mm)	6-11/16" (170 mm)	6-7/8" (175 mm)	1-3/4" (45 mm)	7/8" (22 mm)	2-3/4" (70 mm)	2" (50 mm)	5/16" (8 mm)	3/8" (10 mm)	1" (25 mm)	586	1	20
FT-280	11" (280 mm)	9-13/16" (250 mm)	9-15/16" (253 mm)	2-3/16" (55 mm)	1" (26 mm)	3-1/8" (80 mm)	2-7/16" (62 mm)	3/8" (10 mm)	1/2" (12 mm)	1-1/16" (27 mm)	1088		10