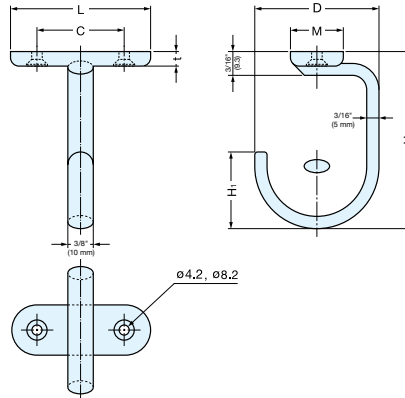


HOOK



DS-H-50, 60



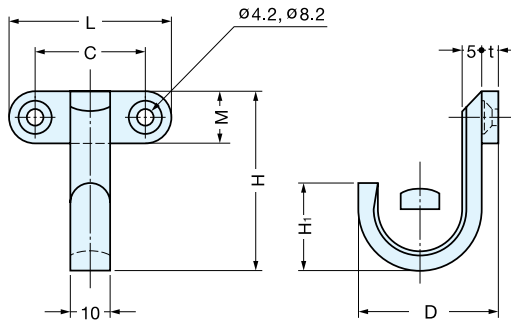
Material	Finish
303 Stainless Steel	Mirror

Item No.	D	C	H	H ₁	L	M	t	Load Capacity	Weight (g)	Box (pcs)
DS-H-50	2" (50)	1-3/8" (35)	2-3/4" (70)	1-3/16" (30)	2-3/16" (55)	13/16" (20)	1/4" (6)	22 lbs (10 kg)	100	5
DS-H-60	2-3/8" (60)		3-15/16" (100)	1-9/16" (40)					105	

HOOK



KB-H-35, 40



Material	Finish
303 Stainless Steel	Mirror

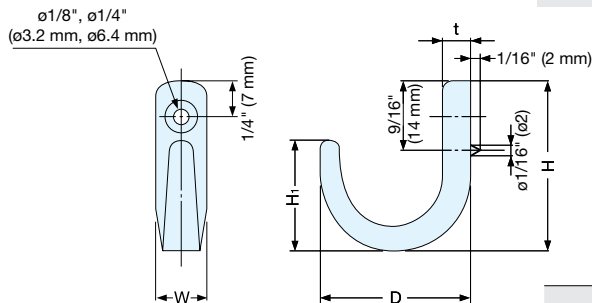
Item No.	D	C	H	H ₁	L	M	t	Load Capacity	Weight (g)	Box (pcs)
KB-H-35	1-3/8" (35)	1-1/16" (27)	1-3/4" (45)	7/8" (22)	1-9/16" (40)	1/2" (13)	3/16" (4)	44 lbs (20 kg)	50	10
KB-H-40	1-9/16" (40)		2" (50)	1" (25)					55	

(Units in mm)

HOOK



TA-3



• Anti-rotation pin prevents hook from turning.

Material	Finish
304 Stainless Steel	Mirror

Item No.	D	W	H	H ₁	t	Load Capacity	Weight (g)	Box (pcs)	Carton (pcs)
TA-3S	7/8" (22)	3/8" (9)	1-1/8" (29)	5/8" (16)	3/16" (4.0)	35 lbs (16 kg)	10	30	600
TA-3L	1-3/16" (30)	3/8" (10)	1-5/16" (34)	7/8" (22)	1/4" (5.5)		19	20	400

(Units in mm)