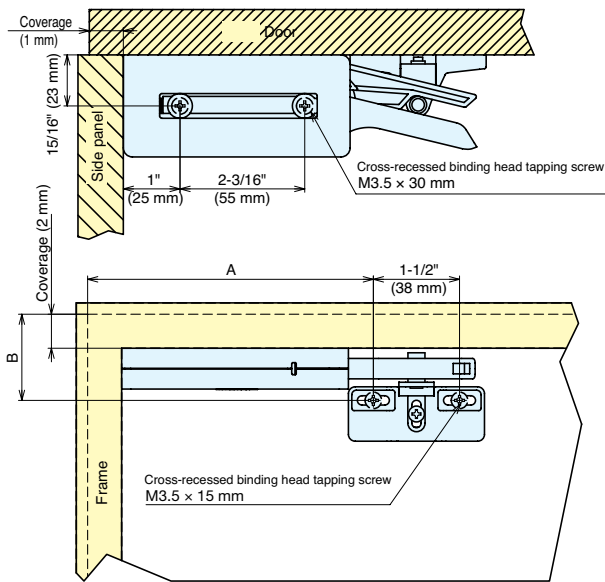


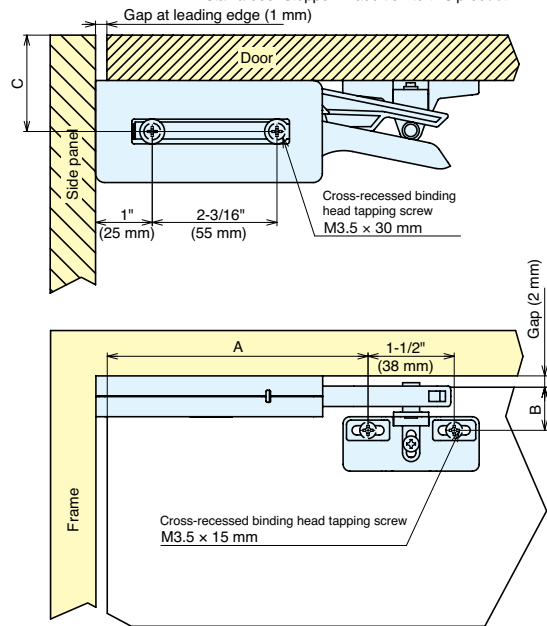
DAMPER CATCH

DC-200

For overlay doors



For inset doors Install a door stopper in addition to this product.



	A	B	C
Overlay Doors	4-1/2" (114 mm) + Coverage (1 mm)	15/16" (24 mm) + Coverage (2 mm)	
Inset Doors	4-1/2" (114 mm) - gap at leading edge (1 mm)	15/16" (24 mm) - gap (2 mm)	15/16" (23 mm)+Door Thickness



DESIGN FEATURES

- Compact and slim design.
- Available in black and white for optimum concealment.
- Available in 2 strengths to accommodate various door sizes.

