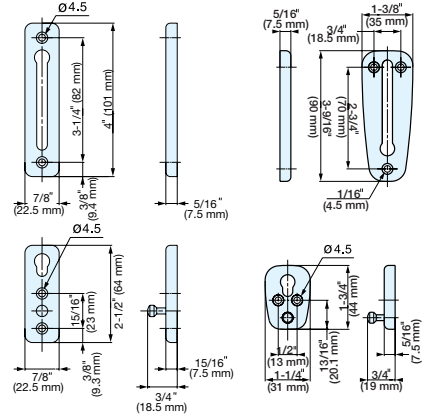


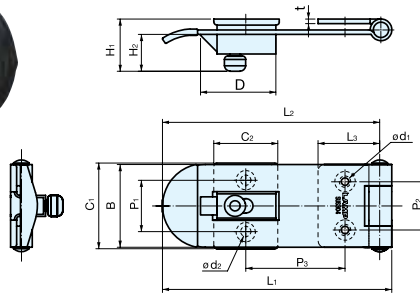
DOOR CHAIN



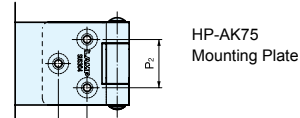
Item No.	Weight (g)	Box (pcs)	Carton (pcs)
CS-1000	115	15	150
CS-2000	120		

Material	Finish
304 Stainless Steel	Satin

LATCH HASP



- Hasp with built-in latch.
- Snap on the flap to keep latch closed.
- Slide the knob to release.
- Flap is spring loaded in open direction.
- Plastic cap on end to soften the opening sound.

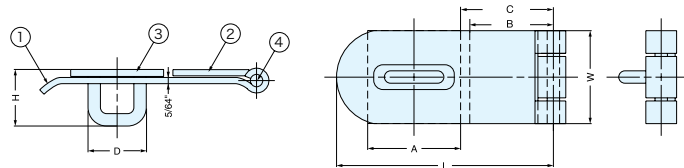
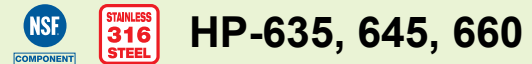


Material	Finish
304 Stainless Steel	Polished
PVC (Cover)	Black

Item No.	L ₁	L ₂	L ₃	B	P ₁	P ₂	P ₃	P ₄	H ₁	H ₂
HP-AK50	2" (51)	1-7/8" (48)	1/2" (13)	7/8" (22.2)	1/2" (13.5)	1/2" (12)	3/4" (19)	-	5/8" (16.6)	7/16" (11.2)
HP-AK65	2-5/8" (66)	2-1/2" (63)	3/4" (19)	15/16" (24.2)		9/16" (14)	1-1/8" (28)	-		
HP-AK75	3" (76)	2-13/16" (72)	1" (24.8)	1-1/16" (27.4)	11/16" (17)	5/8" (16)	1-3/8" (35)	3/8" (9.5)	11/16" (17.5)	1/2" (12.2)

Item No.	C ₁	C ₂	D	t	d ₁	d ₂	Weight (g)	Box (pcs)	Carton (pcs)
HP-AK50	15/16" (23)	11/16" (18.0)	13/16" (20.5)	1/16" (1.2)	1/8" (3.0)	1/16" (2.3)	22	25	250
HP-AK65					1/8" (3.2)	1/8" (3.3)	35	20	200
HP-AK75	1-1/16" (27.6)	13/16" (21.2)	1" (25.0)	1/16" (1.5)	1/8" (3.8)	1/8" (3.4)	48	15	150

WELD-ON STAINLESS STEEL HASP



Item No.	L	W	A	B	C	D	H	Wt (g)	Box (pcs)	Carton (pcs)
HP-635	3-1/2" (89)	1-1/2" (38)	1-1/2" (38)	1-5/16" (33)	1-5/8" (41)	15/16" (23.8)	13/16" (20.6)	110	20	200
HP-645	4-1/2" (114)	2-1/4" (57)		2-1/2" (64)	173			160		
HP-660	6" (152)	2" (50)		3-15/16" (100)	290			100		

No	Part Name	Material	Finish
1	Hinge Leaf Top	316 Stainless Steel	Electro Polished
2	Hinge Leaf Bottom		
3	Base/Loop	304 Stainless Steel	
4	Hinge Pin		

(Dimensions shown in inches.)