

# CABLE GROMMET

# CHC

MISCELLANEOUS



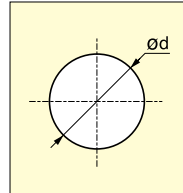
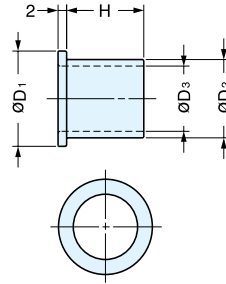
CHC-22/GB  
(Antique Brass)



CHC-18/NI  
(Nickel)



CHC-18/GA  
(Gold)



Bore Dimensions

• Choose from 1/2" (12 mm) or 9/16" (15 mm) grommets, perfect for phone, fax, or LAN data cables.

Weight: CHC-18 8.3 g  
CHC-22 14.5 g

Item No.	Material	Finish	H	D <sub>1</sub>	D <sub>2</sub>	D <sub>3</sub>	d	Box (pcs)
CHC-18/NI	Brass	Satin Nickel	5/8" (16 mm)	11/16" (18 mm)	9/16" (14 mm)	1/2" (12 mm)	9/16" (14.5 mm)	120
CHC-18/GA		Gold						
CHC-18/GB		Antique Brass						
CHC-22/NI		Satin Nickel	11/16" (18 mm)	7/8" (22 mm)	11/16" (18 mm)	9/16" (15 mm)	11/16" (18.5 mm)	
CHC-22/GA		Gold						
CHC-22/GB		Antique Brass						

CABLE GROMMETS

# SPLIT CABLE GROMMET



# CHC-S



CHC-S18GC



CHC-S22DB



CHC-S26BL

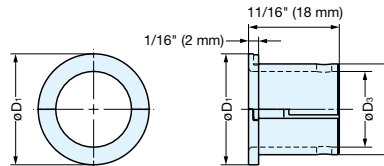
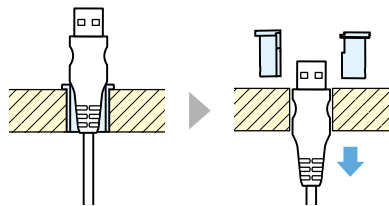
- Opening that can easily be split apart to accept larger plugs or connectors.
- The CHC series provides grommet openings that securely fit your cable size needs.
- High-end metal solution (zinc die casting) for greater durability than plastic grommets.
- CHC-S22 and CHC-S26 come with a guide that helps keep the parts aligned when being reassembled.
- Larger split cable grommet LS-50S-S is also available.

### Cable Diameter

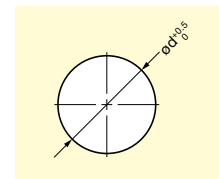
- CHC-S18: 1/2"~9/16" (12~14 mm) (LAN cable and RJ45 connector)
- CHC-S22: 9/16"~11/16" (15~18 mm) (USB cable)
- CHC-S26: 11/16"~7/8" (18~22 mm) (HDMI cable)

\*Please check with actual cables before use.

**Split System** Easy to replace cables.



**Cut Out Dimension**



Item No.	Material	Finish	D <sub>1</sub>	D <sub>2</sub>	D <sub>3</sub>	d	Weight (g)	Box (pcs)	Carton (pcs)
CHC-S18DN	Zinc Alloy (ZDC)	Nickel	11/16" (18 mm)	9/16" (14 mm)	1/2" (12 mm)	9/16" (14 mm)	6	100	400
CHC-S18GC		Gold Plating							
CHC-S18DB		Antique Brass							
CHC-S18BL		Black							
CHC-S22DN		Nickel	7/8" (22 mm)	11/16" (18 mm)	9/16" (15 mm)	11/16" (18 mm)	10		
CHC-S22GC		Gold Plating							
CHC-S22DB		Antique Brass							
CHC-S22BL		Black							
CHC-S26DN		Nickel	1" (26 mm)	7/8" (22 mm)	11/16" (18 mm)	7/8" (22 mm)	16		
CHC-S26GC		Gold Plating							
CHC-S26DB		Antique Brass							
CHC-S26BL		Black							