

SPRING LOADED BARREL BOLT



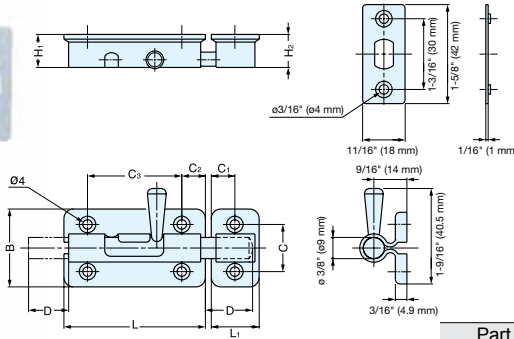
BLS



BLS-90



BLS-60



- Knob springs back into sleeve to keep bolt in locked or unlocked position.
- Supplied with mortise and surface strike.

Part Name	Material	Finish
Body and Plates	304 Stainless Steel	Satin
Bolt and Knob	303 Stainless Steel	

Item No.	L	L ₁	H ₁	H ₂	B	C	C ₁	C ₂	C ₃	D	Weight (g)	Box (pcs)	Carton (pcs)
BLS-60	2-3/8" (60)	1" (25.4)	13/16" (20)	13/16" (20.4)	1-5/16" (33)	13/16" (20)	1/2" (12.7)	3/8" (10.0)	1-9/16" (40)	11/16" (17)	109	20	200
BLS-90	3-9/16" (90)							1/2" (12.5)	2-9/16" (65)	15/16" (24)	147	15	150

BARREL BOLT



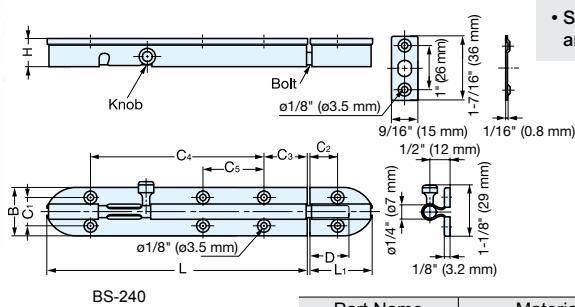
BS



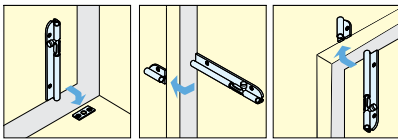
BS-240



BS-90



- Supplied with mortise and surface strike.



Installation

Part Name	Material	Finish
Body and Plates	304 Stainless Steel	Satin
Bolt and Knob	Brass	Nickel

Item No.	L	L ₁	H	B	C ₁	C ₂	C ₃	C ₄	C ₅	D	Weight (g)	Box (pcs)	Carton (pcs)
BS-90	3-9/16" (90)	1-7/16" (36)	5/8" (16.5)	1-1/16" (27)	5/8" (16)	9/16" (15)	9/16" (14.5)	2-1/4" (58)	-	15" (24)	85	30	300
BS-150	5-15/16" (150)						1" (25.0)	3-15/16" (100)	-		125	20	200
BS-240	9-7/16" (240)						3/4" (18.5)	7-9/16" (192)	2-13/16" (71)		190	10	100

SPRING LOADED BARREL BOLT



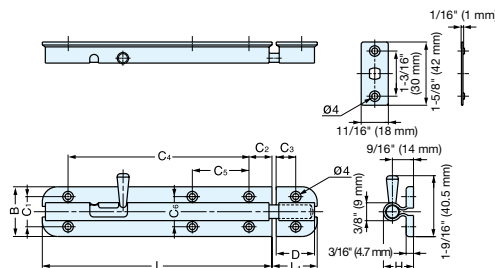
BSS



BSS-240



BSS-90



- Knob springs back into sleeve to keep bolt in locked or unlocked position.
- Supplied with mortise and surface strike.

Item No.	L	L ₁	H	B	C ₁	C ₂	C ₃	C ₄	C ₅	C ₆	D	Weight (g)	Box (pcs)	Carton (pcs)	Part Name	Material	Finish
BSS-90	3-35/64" (90)	1-3/16" (30)	13/16" (20)	1-5/16" (33)	13/16" (20.5)	1/2" (13)	1/2" (13)	2-3/8" (60)	-	13/16" (20)	24	142	15	150	Body and Plates	304 Stainless Steel	Satin
BSS-150	5-29/32" (150)						9/16" (15)	4-1/2" (115)	-		32	215	10	100			
BSS-240	9-29/64" (240)						8-1/16" (205)	2-3/8" (60)	32		330	6	60	Bolt and Knob	303 Stainless Steel	Plain	