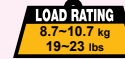
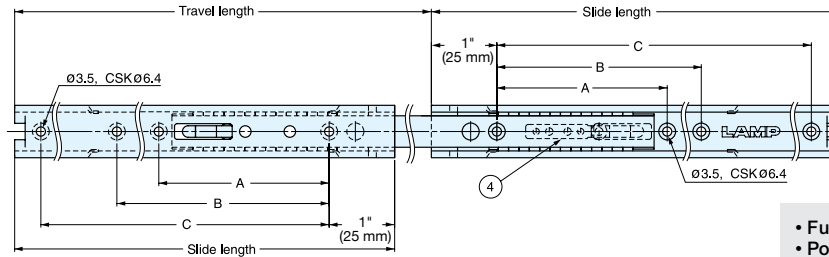
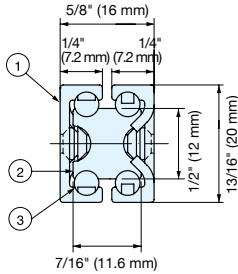


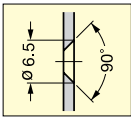
FULL EXTENSION SLIDE (W/HOLD-OUT DETENT)



AR3-K



- Full extension.
- Positive stop.
- Non-handed.
- Hold-out detent.
- Sold by each.



Hole Dimension (Outer Rail)

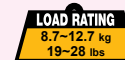
25.4 mm=1"

No.	Part	Material	Finish
①	Outer Rail	Aluminum	Anodized
②	Inner Rail		
③	Balls	Steel	-
④	Detent Catch	304 Stainless Steel	-

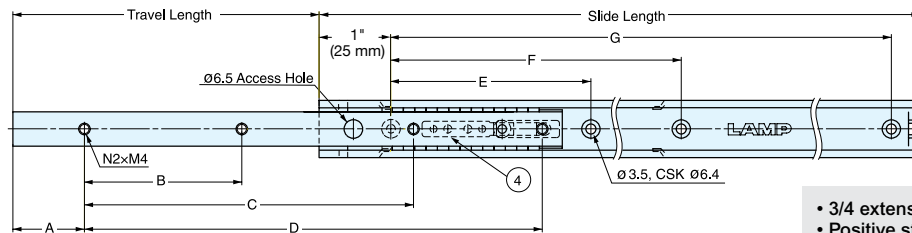
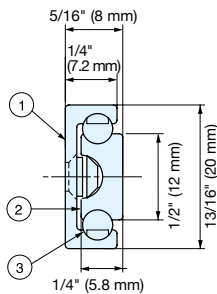
Item No.	Slide Length	Travel Length	A	B	C	Load Rating /pair	Weight (g)	Box (pcs)
AR3-K200	7-7/8" (200 mm)	8-7/16" (214 mm)	5-15/16" (150 mm)	-	-	23 lbs (10.7 kg)	130	30
AR3-K300	11-13/16" (300 mm)	12-3/8" (314 mm)	5-1/8" (130 mm)	9-13/16" (250 mm)	-	22 lbs (10.2 kg)	198	
AR3-K400	15-3/4" (400 mm)	16-5/16" (414 mm)		11" (280 mm)	13-3/4" (350 mm)	17-3/4" (450 mm)	20 lbs (9.2 kg)	263
AR3-K500	19-11/16" (500 mm)	20-1/4" (514 mm)	17-3/4" (450 mm)			19 lbs (8.7 kg)	304	

() units in mm.

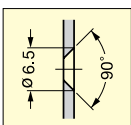
3/4 EXTENSION SLIDE (W/HOLD-OUT DETENT)



AR2-K



- 3/4 extension.
- Positive stop.
- Non-handed.
- Hold-out detent.
- Sold by each.



Hole Dimension (Outer Rail)

25.4 mm=1"

No.	Part	Material	Finish
①	Outer Rail	Aluminum	Anodized
②	Inner Rail		
③	Balls	Steel	-
④	Detent Catch	304 Stainless Steel	-

Item No.	Slide Length	Travel Length	A	B	C	D	E	F	G	Load Rating /pair	Weight (g)	Box (pcs)
AR2-K200	7-7/8" (200 mm)	4-7/16" (110 mm)	1" (25 mm)	(60)	(160)	-	(150)	-	-	28 lbs (12.7 kg)	64	50
AR2-K300	11-13/16" (300 mm)	6-11/16" (170 mm)	1-3/4" (45 mm)	(100)	(230)	-	(130)	(250)	-	25 lbs (11.2 kg)	97	
AR2-K400	15-3/4" (400 mm)	9-1/16" (230 mm)	1-3/4" (45 mm)	(150)	(270)	(330)	(130)	(280)	(350)	21 lbs (9.7 kg)	130	
AR2-K500	19-11/16" (500 mm)	11-7/16" (290 mm)	1-3/4" (45 mm)	(190)	(340)	(430)	(130)	(280)	(450)	19 lbs (8.7 kg)	162	

() units in mm.