

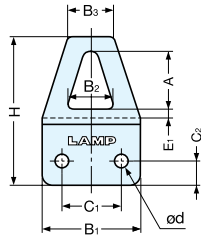
# HANGER PLATE



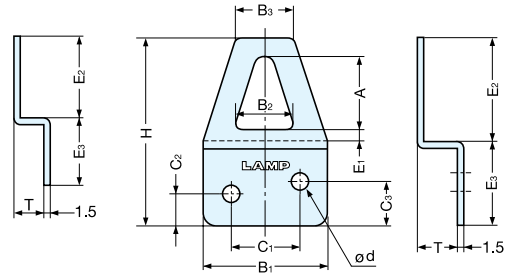
AP

HOOKS

HANGER PLATES



AP-20



AP-25, 32

Material	Finish
304 Stainless Steel	Polished

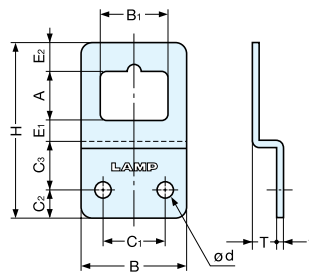
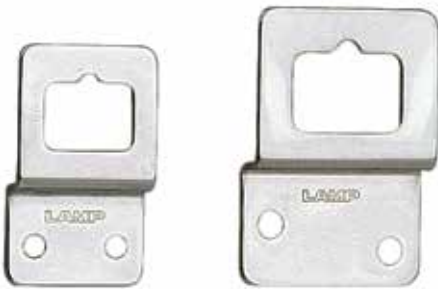
Item No.	B <sub>1</sub>	B <sub>2</sub>	B <sub>3</sub>	H	A	C <sub>1</sub>	C <sub>2</sub>	C <sub>3</sub>	d	E <sub>1</sub>	E <sub>2</sub>	E <sub>3</sub>	T	Load Capacity	Weight (g)	Box (pcs)	Carton (pcs)	Screw
AP-20	13/16" (20)	3/8" (9.2)	3/8" (9.2)	1-3/16" (30.4)	7/16" (11.8)	1/2" (12)	3/16" (5.0)	-	1/8" (2.8)	1/16" (2.0)	11/16" (16.8)	9/16" (13.6)	1/4" (6)	22 lbs (10 kg)	6	100	1000	2.7 × 13
AP-25	1" (25)	7/16" (11.5)	7/16" (11.5)	1-1/2" (37.5)	9/16" (14.7)	9/16" (14)	1/4" (6.5)	3/8" (9)	1/8" (3.3)	1/8" (2.5)	13/16" (20.5)	11/16" (17.0)	5/16" (8)		10			3.1 × 16
AP-32	1-1/4" (32)	9/16" (14.8)	9/16" (14.8)	1-7/8" (47.0)	11/16" (17.2)	11/16" (18)	5/16" (8.0)	1/2" (12)	3/16" (4.2)	1/8" (3.2)	15/16" (24.5)	7/8" (22.5)	3/8" (10)		16			3.5 × 16

(units in mm)

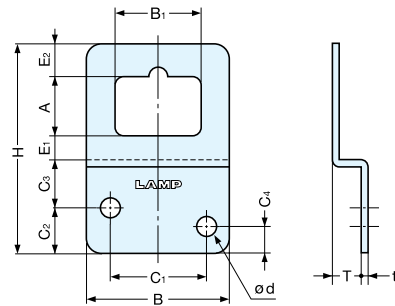
# HANGER PLATE



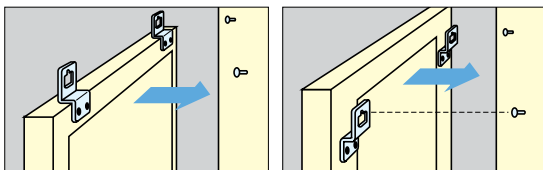
SP



SP-17, 22



SP-30



Material	Finish
304 Stainless Steel	Polished

Item No.	B	B <sub>1</sub>	H	A	C <sub>1</sub>	C <sub>2</sub>	C <sub>3</sub>	C <sub>4</sub>	d	E <sub>1</sub>	E <sub>2</sub>	T	t	Load Capacity	Weight (g)	Box (pcs)	Carton (pcs)	Screw
SP-17	11/16" (17)	7/16" (10.5)	1-1/8" (28.5)	1/4" (7)	5/16" (8)	3/16" (4.5)	9.5" (9.5)	-	1/8" (2.7)	1/8" (3.5)	3/16" (4)	3/16" (4)	1/16" (1.2)	22 lbs (10 kg)	4	200	1000	2.7 × 13
SP-22	7/8" (22)	9/16" (14.0)	1-7/16" (36.5)	3/8" (10)	1/2" (13)	1/4" (6.0)	3/8" (10.0)	-	1/8" (3.3)	3/16" (4.5)	1/4" (6)	3/16" (5)	1/16" (1.5)		8			3.1 × 16
SP-30	1-3/16" (30)	11/16" (18.0)	1-11/16" (43.5)	1/2" (12)	13/16" (20)	3/8" (9.5)	3/8" (10.0)	1/4" (5.5)	3/16" (4.2)	3/16" (5.0)	1/4" (7)	1/4" (6)	13		3.5 × 16			

(units in mm)