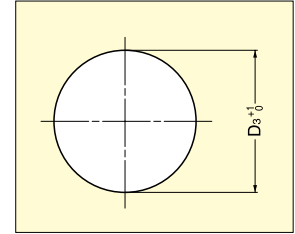
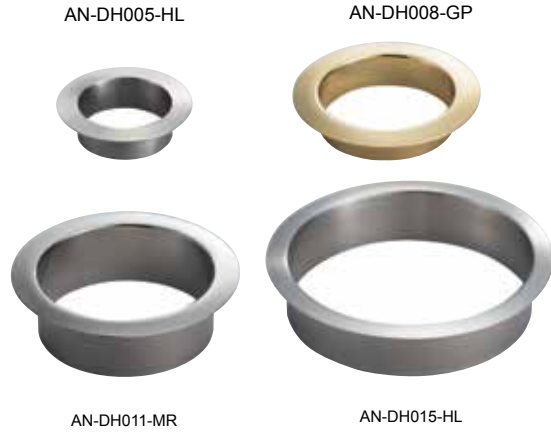


MULTI-PURPOSE GROMMET

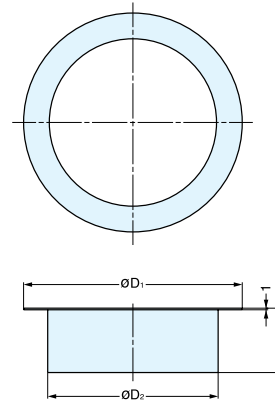
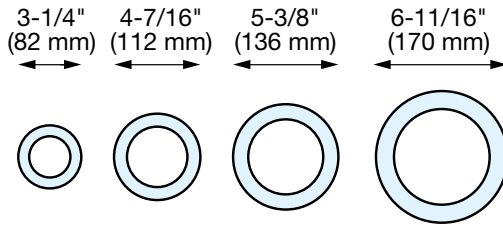


AN-DH, AN-LH

- Corrosion resistant.
- Wide range of sizes and finishes.



Cut Out Dimensions



Item No.	Old Item No.	A	D ₁	D ₂	D ₃	Material	Finish	Weight (g)
AN-DH005-GP	-	1-7/16" (36 mm)	3-1/4" (82 mm)	2-1/4" (58 mm)	2-5/16" (59 mm)	304 Stainless Steel	Gold	66
* AN-DH005-MR	-		Mirror					
* AN-DH005-HL	-		Satin					
AN-DH008-GP	AN-DH001-GP	1-7/16" (36 mm)	4-7/16" (112 mm)	3-1/4" (82 mm)	3-1/4" (83 mm)		Gold	107
* AN-DH008-MR	AN-DH001-MR		Mirror					
* AN-DH008-HL	AN-DH001-HL		Satin					
AN-DH011-GP	-	1-9/16" (40 mm)	5-3/8" (136 mm)	4-3/16" (106 mm)	4-3/16" (107 mm)		Gold	137
* AN-DH011-MR	-		Mirror					
* AN-DH011-HL	-		Satin					
AN-DH015-GP	-	1-7/16" (36 mm)	6-11/16" (170 mm)	5-3/4" (146 mm)	5-13/16" (147 mm)	Gold	182	
* AN-DH015-MR	-		Mirror					
* AN-DH015-HL	-		Satin					

Item No.	Old Item No.	A	D ₁	D ₂	D ₃	Material	Finish	Weight (g)	
AN-LH005-GP	-	7/8" (22 mm)	3-1/4" (82 mm)	2-1/4" (58 mm)	2-5/16" (59 mm)	304 Stainless Steel	Gold	50	
* AN-LH005-MR	-		Mirror						
* AN-LH005-HL	-		Satin						
AN-LH008-GP	AN-LH001-GP		7/8" (22 mm)	4-7/16" (112 mm)	3-1/4" (82 mm)		3-1/4" (83 mm)	Gold	77
* AN-LH008-MR	AN-LH001-MR			Mirror					
* AN-LH008-HL	AN-LH001-HL			Satin					
AN-LH011-GP	-		7/8" (22 mm)	5-3/8" (136 mm)	4-3/16" (106 mm)		4-3/16" (107 mm)	Gold	92
* AN-LH011-MR	-			Mirror					
* AN-LH011-HL	-			Satin					
AN-LH015-GP	-	7/8" (22 mm)	6-11/16" (170 mm)	5-3/4" (146 mm)	5-13/16" (147 mm)	Gold	122		
* AN-LH015-MR	-		Mirror						
* AN-LH015-HL	-		Satin						

*NSF Certified