

MULTI-PURPOSE LID (SOFT CLOSE)

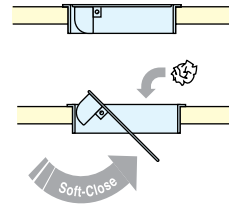
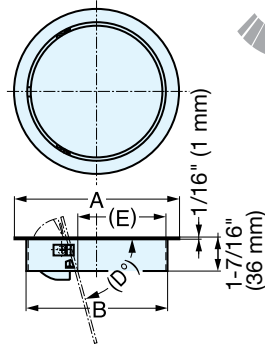
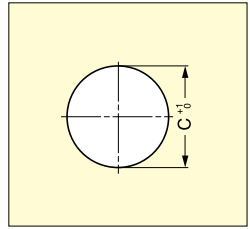


AD-GD



- Soft and slow closing movement with a built-in damper mechanism.
- Wide opening, self-leveling lid.
- Stainless steel for corrosion resistance.
- Operating temperature: 32°F - 104°F (0°C - 40°C)
- Horizontal use only.

Cut Out Dimensions



Material	Finish
304 Stainless Steel	Satin
303 Stainless Steel	
Polyacetal	
Steel	
CRC	
NBR (Rubber)	

Item No.	A	B	C	D	E	Weight (g)	Box (pcs)	Carton (pcs)
AD-GD011-HL	5-3/8" (136 mm)	4-3/16" (106 mm)	4-3/16" (107 mm)	3-7/16" (87 mm)	2-7/16" (62 mm)	460	1	10
AD-GD015-HL	6-11/16" (170 mm)	5-3/4" (146 mm)	5-13/16" (147 mm)	2-15/16" (75 mm)	3-9/16" (90 mm)	1000		6
AD-GD020-HL	8-11/16" (220 mm)	7-3/4" (196 mm)	7-13/16" (198 mm)	3-1/8" (80 mm)	5-1/16" (128 mm)	1060		

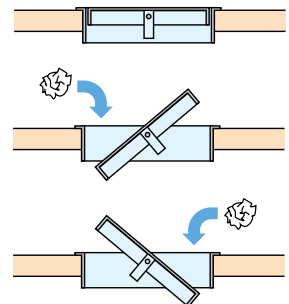
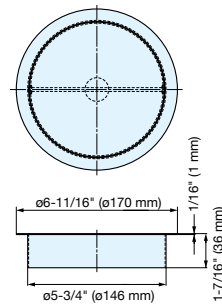
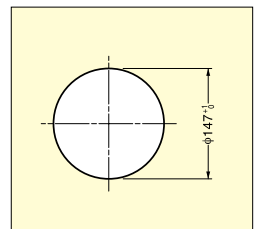
MULTI-PURPOSE LID



AD-DH015-HL



- Self-leveling lid.
- Horizontal use only.



Item No.	Weight (g)	Box (pcs)	Carton (pcs)	Material	Finish
AD-DH015-HL	554	1	10	304 Stainless Steel	Satin