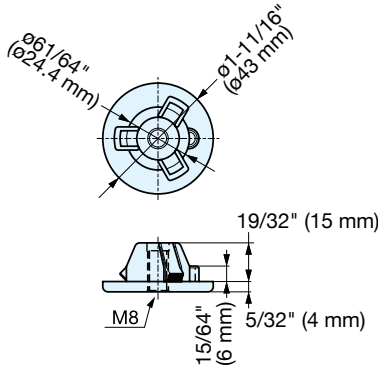


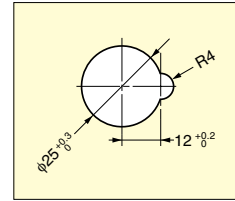
GLIDE BASE



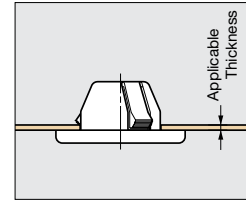
AD-438



• Snap-in glide base for sheet metal 1/32" to 1/16" (0.8-1.6 mm) thick.



Bore Dimension



Installation

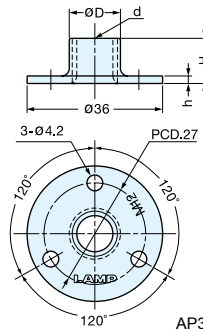
Material	Finish
Polyacetal	Grey

Item No.	Applicable Sheet Metal Thickness	Load Capacity	Weight (g)	Box (pcs)	Carton (pcs)
AD-438	1/32"-1/16" (0.8~1.6 mm)	110 lbs (50 kg)	10	100	1000

STAINLESS STEEL GLIDE BASE



AP-36



AP36-M12 is shown.

• 304 stainless steel for rust and corrosion resistance.

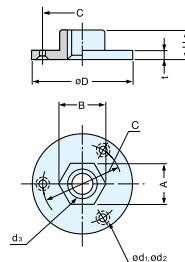
Material	Finish
304 Stainless Steel	Plain

Item No.	d	D	h	H	Weight (g)	Box (pcs)	Carton (pcs)
AP-36-M8	M8X1.25	3/8" (9.6 mm)	1/16" (1.5 mm)	15/32" (12 mm)	16	100	1000
AP-36-M10	M10X1.5	7/16" (11.5 mm)	1/16" (1.5 mm)	15/32" (12 mm)	16	100	1000
AP-36-N3	W3/8-16.0	7/16" (10.9 mm)	1/16" (1.5 mm)	15/32" (12 mm)	16	100	1000
AP-36-M12	M12X1.75	9/16" (13.9 mm)	3/32" (2 mm)	7/16" (11.5 mm)	20	80	800

GLIDE BASE



KD-555



Material	Finish
Zinc Alloy	Clear Zinc Chromate

Item No.	D	C	H	t	d ₁	d ₂	d ₃	A	B	Weight (g)	Box (pcs)	Carton (pcs)
KD-555-28-M10	1-3/32" (28 mm)	25/32" (20 mm)	11/32" (9 mm)	1/8" (2.7 mm)	1/8" (3.2 mm)	1/4" (6.4 mm)	M10x1.5	1/2" (13 mm)	9/16" (14 mm)	15	240	1440
KD-555-25	31/32" (25 mm)	3/4" (19 mm)	5/16" (8 mm)	1/8" (2.7 mm)	1/8" (3.2 mm)	7/32" (5.3 mm)	W5/16-18	7/16" (11.2 mm)	1/2" (12.5 mm)	10	320	1920
KD-555-28	1-3/32" (28 mm)	25/32" (20 mm)	11/32" (9 mm)	1/8" (2.7 mm)	1/8" (3.2 mm)	1/4" (6.4 mm)	W3/8-16	1/2" (13 mm)	9/16" (14 mm)	15	240	1440
KD-555-39	1-17/32" (39 mm)	1-3/16" (30 mm)	7/16" (11 mm)	1/8" (3 mm)	1/8" (3.2 mm)	1/4" (6.4 mm)	W1/2-12	5/8" (15.8 mm)	21/32" (16.8 mm)	30	100	600