

CABINET LOCK



7910



7910-20CR

7910-20BL

7910-20GP

- High security million lock dimple key that is reversible and difficult to duplicate.
- A non-handed cylinder lock available in Chrome, Black and Gold (24k) finishes.
- Rounded, downward locking dead bolt for added security and easier installation (only need to drill round hole).
- Please specify keyed alike or differently when ordering. Up to 2,520 master key changes (1 master available as special order).
- Door thickness: 11/16" ~ 13/16" (18 ~ 20 mm).

Reversible Key

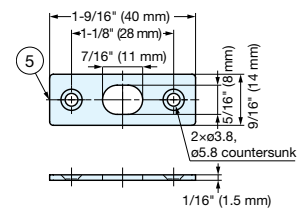
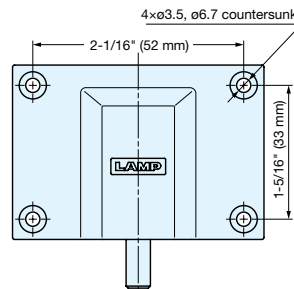
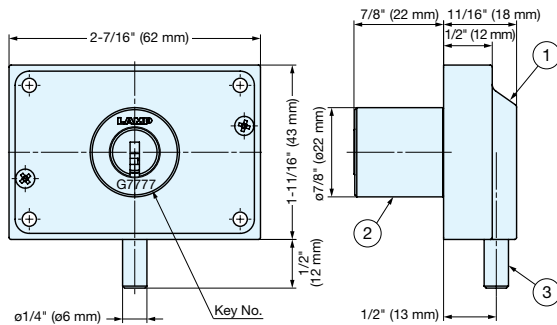
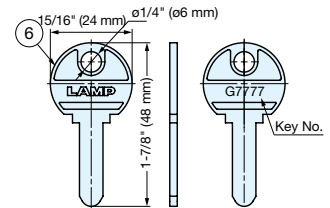
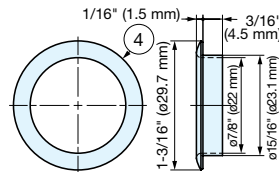


Comes with dimple key.

Round Dead Bolt



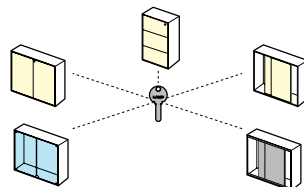
Drill hole for dead bolt and mount strike plate.



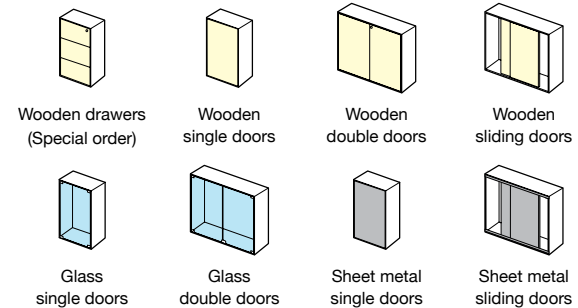
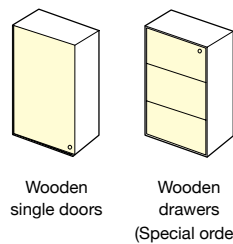
Multiple cabinets can be locked and unlocked with the same key.

Supported Doors

Doors Supported by other Million Lock Series locks

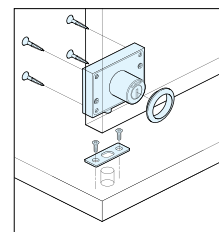


As shown in the figure, the same key can be used to lock and unlock multiple cabinets in the Million Lock Series if the same key number is specified.



No.	Part Name	Material	Finish		
			CR	GP	BL
①	Body	Zinc Alloy (ZDC)	Chrome Plating	24K Gold Plating	Black Chrome Finish
②	Cylinder	Brass	Chrome Plating		
③	Dead Bolt		Chrome Plating	24K Gold Plating	Black Chrome Finish
④	Ring	304 Stainless Steel	Glass Polish		Coating/ Black
⑤	Retainer		Glass Polish		Coating/ Black
⑥	Key	Brass	Nickel Plating		

Installation



Item No.	Key Type	Cylinder Diameter	Door Thickness	Finish/Color	Key Removal	Key Rotation	Weight (g)	Box (pcs)	Carton (pcs)
7910-20CR-G1001	Keyed Alike	7/8" (22 mm)	11/16" ~ 13/16" (18-20 mm)	Chrome Plating	2 Positions	360°	210	12	60
7910-20CR-KD	Keyed Different			24K Gold Plating					
7910-20GP-G1001	Keyed Alike			Black Chrome					
7910-20GP-KD	Keyed Different								
7910-20BL-G1001	Key Alike								
7910-20BL-KD	Keyed Different								