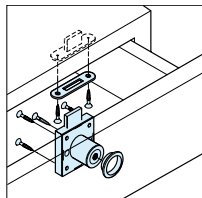


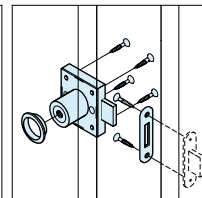
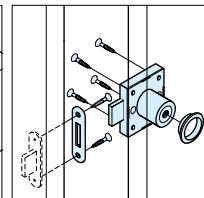


- Round stem dimple key is difficult to duplicate, and the cylinder lock is difficult to pick, for additional security.
- Key can be easily inserted into the lock at any angle.
- Lock is non-handed, and can be installed on cabinet drawers, swinging doors, display cases, or cabinets for safes.
- Hidden cylinder application possible with long key 7110SPK-L10.
- Specify keyed alike or different when ordering.
- Maximum 500,000 key changes available.
- Master keying options available by special order.

Drawer Application



Swing Door Application



Right handed door

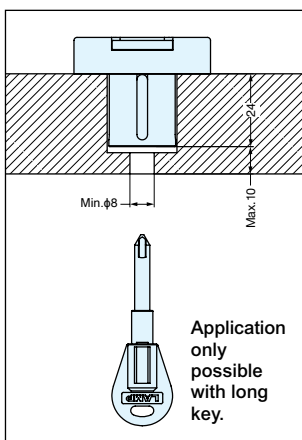
Left handed door



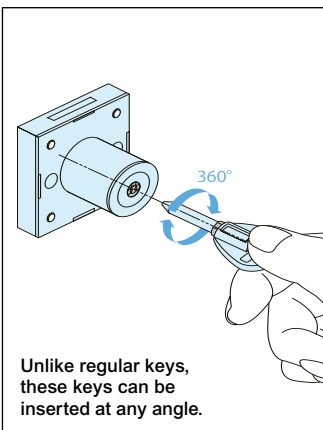
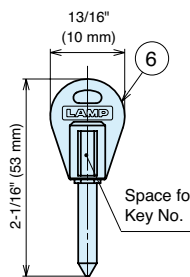
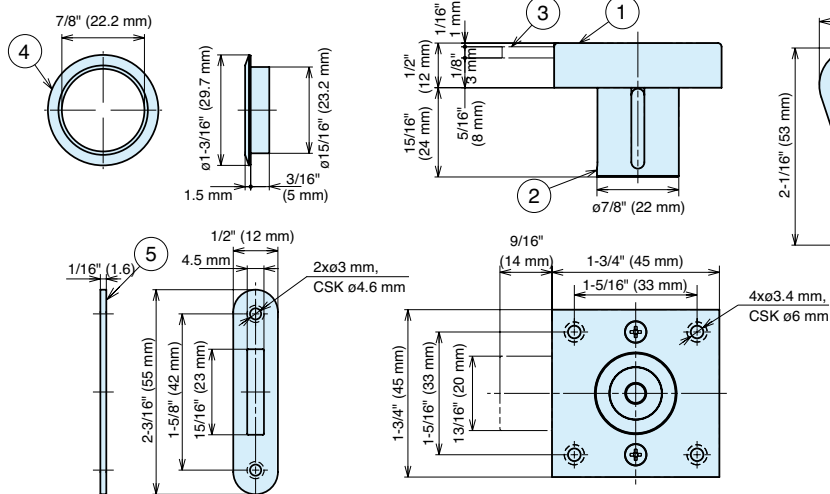
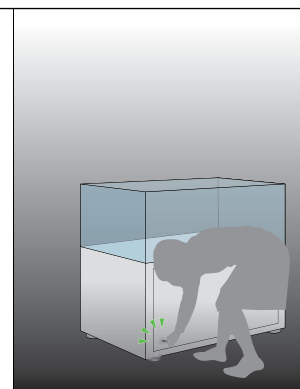
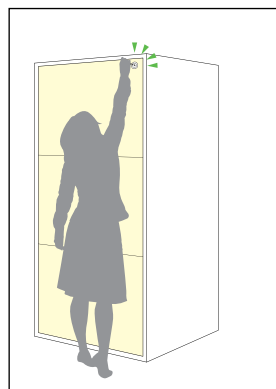
7110SPK-L10



7110SPK-L10



For discreet lock installations



Unlike regular keys, these keys can be inserted at any angle.

No.	Part Name	Material	Finish
①	Body	304 Stainless Steel	Plain
②	Cylinder	Brass	Nickel
③	Dead Bolt	304 Stainless Steel	Plain
④	Ring	Brass	Nickel
⑤	Strike	Steel	
⑥	Key	304 Stainless Steel, Polyacetal (POM)	Plain

Item No.	Key Type	Door Thickness	Cylinder Diameter	Weight (g)	Box (pcs)	Carton (pcs)
7110-24-DN	-	7/8"~15/16" (22~24 mm)	7/8" (22 mm)	160	12	60
7110-24-DN-B	Key Different					
7110-24-DN-D	Key Alike					

7110SPK-L10: Long key must be ordered separately.