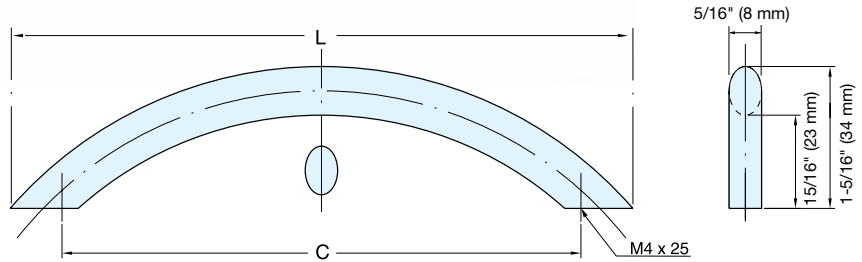


HANDLE



30 SERIES



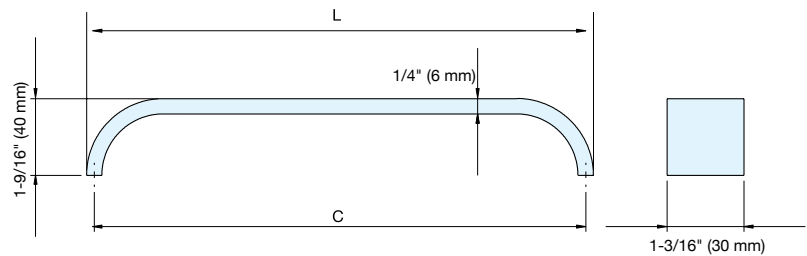
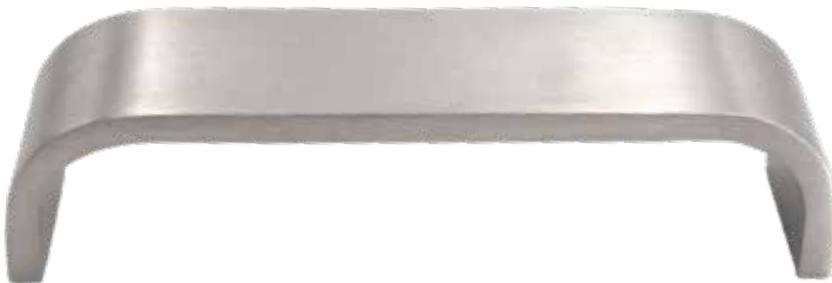
Item No.	L	C	Weight (g)	Box (pcs)	Carton (pcs)
3096-S	4-5/8" (118 mm)	3-3/4" (96 mm)	72	25	250
3097-S	5-15/16" (151 mm)	5-1/16" (128 mm)	90		
3099-S	8-13/16" (224 mm)	7-9/16" (192 mm)	128		

Material	Finish
304 Stainless Steel	Satin

HANDLE



DSI-120



Item No.	L	C	Weight (g)	Box (pcs)	Carton (pcs)
DSI-120-96	4" (102 mm)	3-3/4" (96 mm)	186	25	250
DSI-120-128	5-1/4" (134 mm)	5-1/16" (128 mm)	248		
DSI-120-160	6-9/16" (166 mm)	6-5/16" (160 mm)	275		
DSI-120-192	7-3/4" (196 mm)	7-9/16" (192 mm)	375	10	100
DSI-120-320	12-13/16" (326 mm)	12-5/8" (320 mm)	620		
DSI-120-512	20-3/8" (518 mm)	20-3/16" (512 mm)	992		

Material	Finish
304 Stainless Steel	Satin