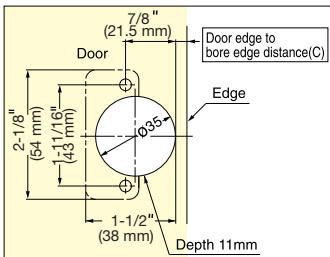
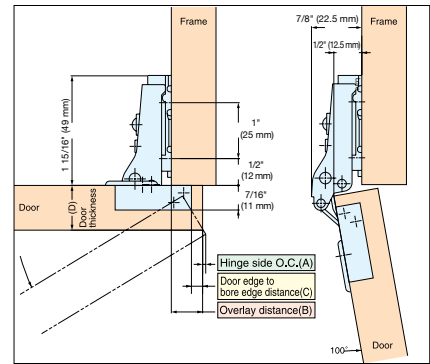


CONCEALED HINGE (3/8" (9 mm) OVERLAY)



304B-46/9, C46/9



Bore Dimensions

■ Door edge to bore edge distance (C) and Overlay distance (B) Table 1.

Door edge to bore edge distance (C)	1/8" (3 mm)	3/16" (4 mm)	3/16" (5 mm)
Overlay distance (B)	1/4" (7 mm)	5/16" (8 mm)	3/8" (9 mm)

■ Hinge side opening clearance chart Table 2.

Door thickness (D)	Door edge to bore edge distance (C)		
	1/8" (3 mm)	3/16" (4 mm)	3/16" (5 mm)
9/16" (15 mm)	0.5	0.5	0.5
5/8" (16 mm)	0.7	0.7	0.7
11/16" (17 mm)	0.8	0.8	0.8
11/16" (18 mm)	1.0	1.0	1.0
3/4" (19 mm)	1.2	1.2	1.2
13/16" (20 mm)	1.4	1.4	1.4

Hinge side O.C. (A)

*Mounting Plate sold separately. See P.297

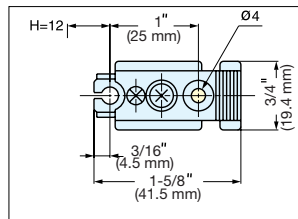
Item No.	Type	Weight (g)	Carton (pcs)
304B-46/9	Free Swinging	60	200
304B-C46/9	Self-Closing		

Material	Finish
304 Stainless Steel	Polished

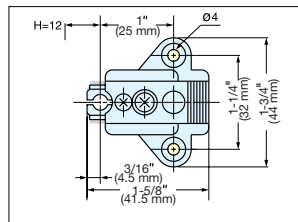
MOUNTING PLATE FOR 304B SERIES HINGES



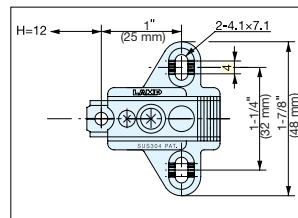
304B-P3A



304B-P4A/32



304B-P4A/32-3W



Installation

• Mounting plate for 304B hinges.



Face Frame Bracket for 304B-P4A/32 and 304B-P4A/32-3W. See P.344 (Sold separately)

Item No.	Weight (g)	Carton (pcs)
304B-P3A	40	400
304B-P4A/32		
304B-P4A/32-3W		

Material	Finish
304 Stainless Steel	Polished