

PUSH LOCK FASTENER (MINI/BUTTON TYPE)

255F, 155F

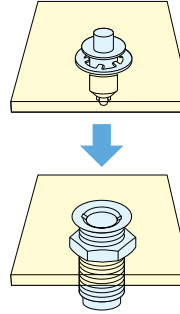


255F



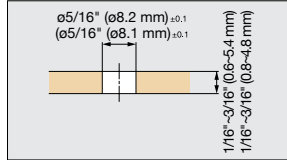
155F

- 2 piece fastener allows for fast and easy access with complete removal of panel.
- Attach socket into outer panel / plug into removable panel.
- Insert plug into socket and push to lock / unlock.
- Flush locked design prevents snagging.
- Fastens plastic or sheet metal panels.



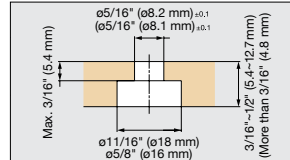
■ Preparation (Plug)

Board Thickness (P) = 0.6~5.4 (0.8~4.8)



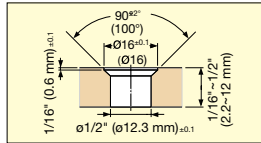
* () dimension for 155F

Board Thickness (P) = 5.4~12.7 (More than 4.8)



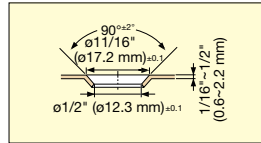
■ Preparation (Socket)

Board Thickness = 2.2~12

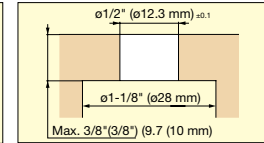
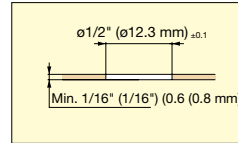


* () dimension for 155F

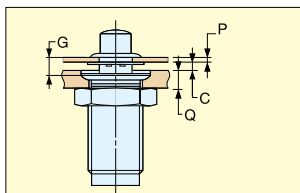
Board Thickness = 0.6~2.2



Board Thickness = 0.6~9.7 (0.8~10)

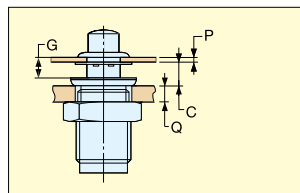


■ Grip Dimensions



C = 0~2.2 (0~2.5)
G = P + C + 0.7
Q = 2.2~12

* () dimension for 155F



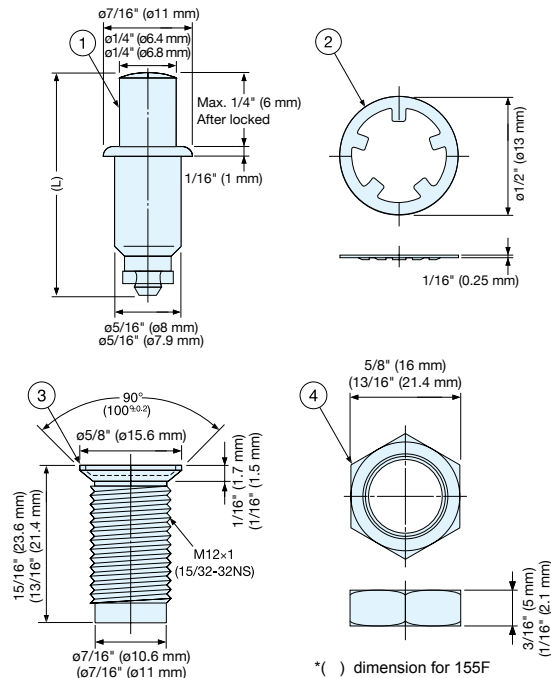
C = More than 2.3 (2.2)
G = P + C - 1.4
Q = 0.6~9.7

■ 155F

No.	Part Name	Material	Finish
①	Plug	Brass	Chrome
②	Ring	304 Stainless steel	Plain
③	Socket	Zinc Alloy	Chromate
④	Nut	Steel	

■ 255F

No.	Part Name	Material	Finish
①	Plug	Polyacetal	Black
②	Ring	Steel	
③	Socket	Polyacetal	
④	Nut	Polyacetal	



* () dimension for 155F

Item No.	Grip Dimension G	Plug Dimension L	Retaining Force	Weight (g)
255F-01-3	1/16"~1/8" (1.2~2.8mm)	23.5	33 lbs (15 kg)	6
255F-03-3	1/8"~3/16" (2.8~4.4 mm)	25.0		
255F-05-3	3/16"~1/4 (4.4~6.0 mm)	26.5		

Item No.	Grip Dimension G	Plug Dimension L	Retaining Force	Weight (g)
155F-01-1	1/16"~1/8" (1.2~2.8mm)	21.5	33 lbs (15 kg)	6
155F-03-1	1/8"~3/16" (2.8~4.4 mm)	23.0		
155F-05-1	3/16"~1/4 (4.4~6.0 mm)	24.5		