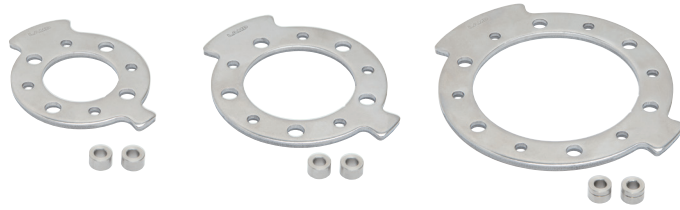


ANGLE LIMITER PLATE FOR SWIVEL TORQUE HINGE

STAINLESS
430
STEEL

STAINLESS
303
STEEL

HG-S-ARP



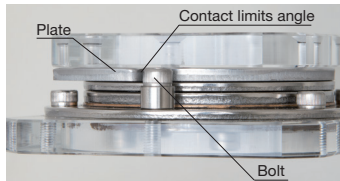
HG-S-34ARP

HG-S-50ARP

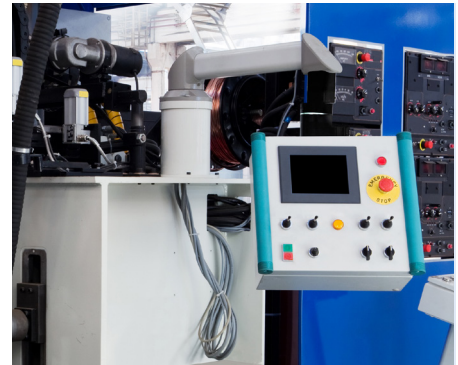
HG-S-75ARP

- Plate and stopper form a set to control the swivel angle of HG-S swivel torque hinge series.
- HG-S-34ARP works only with HG-S50-34 and HG-S70-34
- HG-S-50ARP works only with HG-S70-50 and HG-S100-50
- HG-S-75ARP works only with HG-S50-75 and HG-S70-75
- Two swivel directions (clockwise and counterclockwise) and five angles (30°, 60°, 90°, 120°, or 150°).

Angle Limit Mechanism

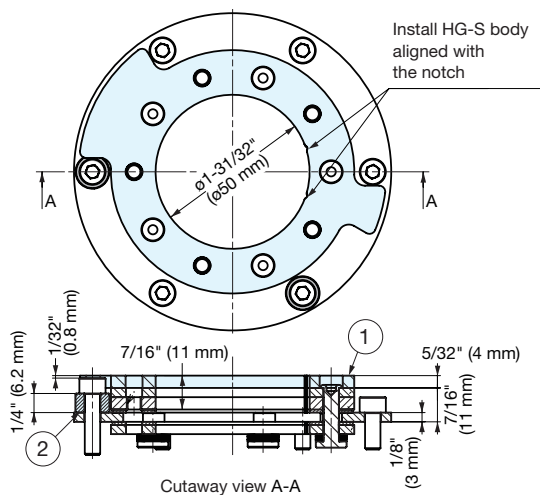
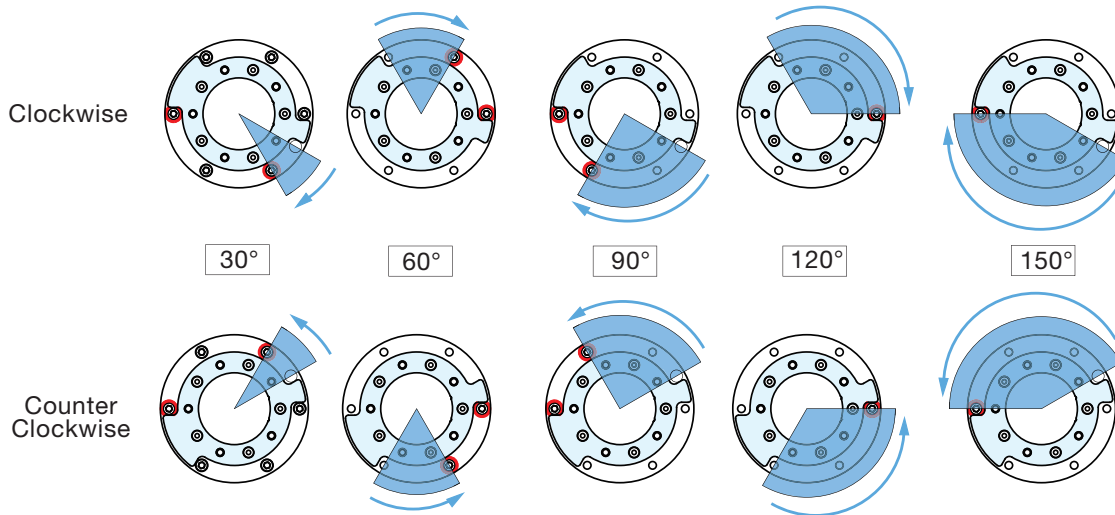


The angle is limited by contact between the stopper co-fastening bolt (to be prepared by the customer) and the plate.

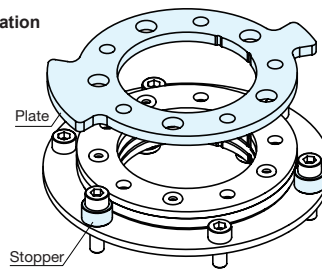


The HG-S-ARP controls the swivel angle. Great for motion control to prevent equipment damage.

Stopper Installation Position, Swivel Direction & Control Angle



Part Configuration



No.	Part Name	Material	Finish
①	Angle Limiter Plate	430 Stainless Steel	Barrel Polished
②	Angle Limiter Stopper	303 Stainless Steel	Plain

Item No.	Corresponding Hinge	Weight (g)
HG-S-34ARP	HG-S-34	77.6
HG-S-50ARP	HG-S-50	99.7
HG-S-75ARP	*HG-S-75	148.5