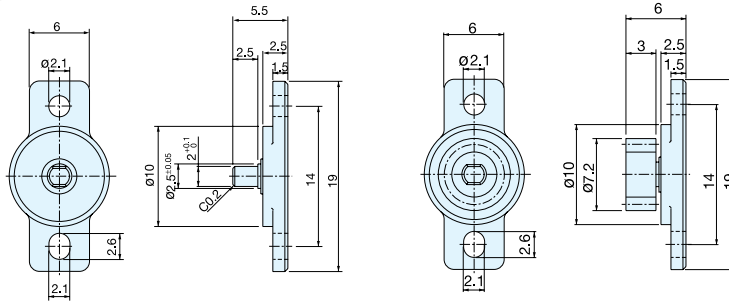


ROTARY DAMPER (TWO WAY)

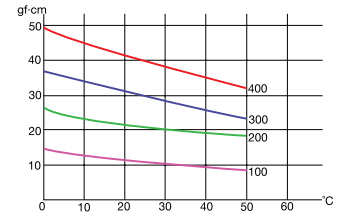
SRT-E2

Special Order

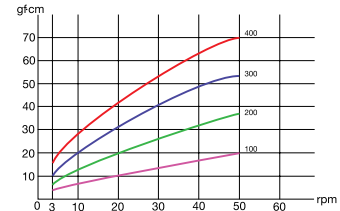


With Gear

Torque at Different Temperature (20rpm)



Torque at Different Speed (23°C/73°F)



Part Name	Material
Body	Polycarbonate
Shaft	Polyacetal
Gear	

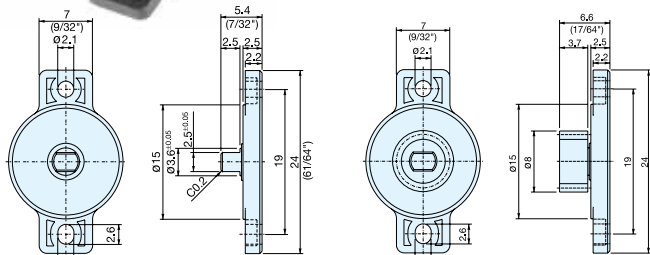
Gear Specification	
Type	Standard Spur Gear
Tooth	Involute (Full)
Module	0.6 mm
Pressure Angle	20°
Number of Teeth	10
Pitch Circle Diameter	6 mm

Item No.	Gear	Torque (gf-cm)	Weight (g)	Box (pcs)	Carton (pcs)
SRT-E2-100	Without	10 (0.14 in-oz)	0.32	2000	10000
SRT-E2-100G1	With		0.41		
SRT-E2-200	Without	20 (0.28 in-oz)	0.32		
SRT-E2-200G1	With		0.41		
SRT-E2-300	Without	30 (0.42 in-oz)	0.32		
SRT-E2-300G1	With		0.41		
SRT-E2-400	Without	40 (0.56 in-oz)	0.32		
SRT-E2-400G1	With		0.41		

ROTARY DAMPER (TWO WAY)

SRT-G2

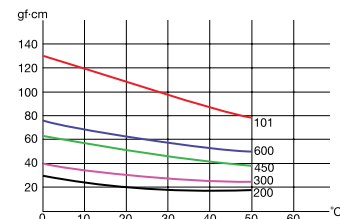
Special Order



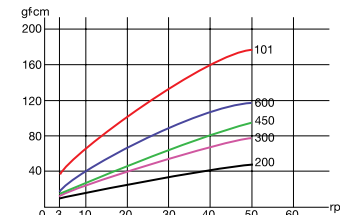
Without Gear

With Gear

Torque at Different Temperature (20rpm)



Torque at Different Speed (23°C/73°F)



Item No.	Gear	Torque (gf-cm)	Weight (g)	Box (pcs)	Carton (pcs)
SRT-G2-200	Without	20 (0.28 in-oz)	0.6	1000	5000
SRT-G2-200G1	With		0.8		
SRT-G2-300	Without	30 (0.42 in-oz)	0.6		
SRT-G2-300G1	With		0.8		
SRT-G2-450	Without	45 (0.63 in-oz)	0.6		
SRT-G2-450G1	With		0.8		
SRT-G2-600	Without	60 (0.83 in-oz)	0.6		
SRT-G2-600G1	With		0.8		
SRT-G2-101	Without	100 (1.39 in-oz)	0.6		
SRT-G2-101G1	With		0.8		

Part Name	Material
Body	Polycarbonate
Shaft	Polyacetal
Gear	

Gear Specification	
Type	Standard Spur Gear
Tooth	Involute (Full)
Module	0.5 mm
Pressure Angle	20°
Number of Teeth	14
Pitch Circle Diameter	7 mm