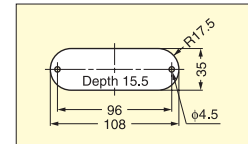
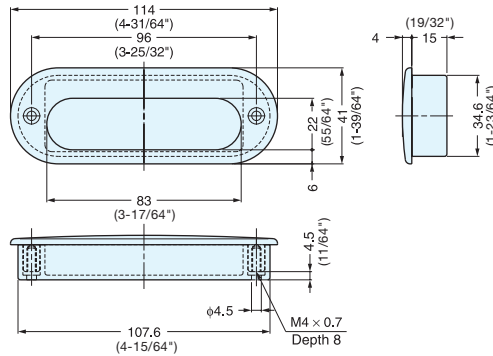


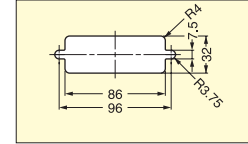
# RECESSED PULL



# HH-D



Panel Cut Out Dimensions



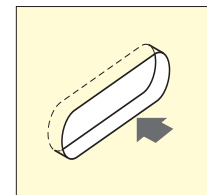
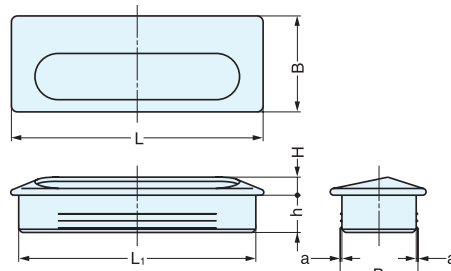
Cut Out Dimensions for sheet metal. Put sheet metal between front and back part for sheet metal applications. (Max. sheet metal thickness: 2 mm)

Item No.	Weight (g)	Box (pcs)	Carton (pcs)	Material	Finish/Color
HH-D	85	10	60	316 Stainless Steel	Mirror
				ABS	Black

# RECESSED PULL



# UT



Panel Installation

Material	Finish/Color
304 Stainless Steel	Satin (S)
<del>Brass (UT-105/PB only)</del>	<del>Brass (PB)/(UT-105/PB)</del>
Plastic	Black

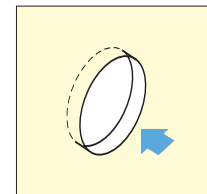
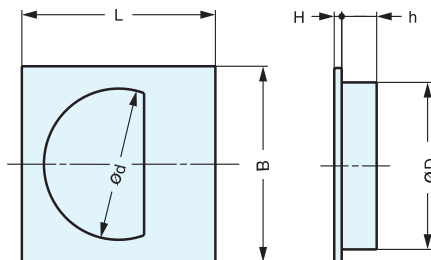
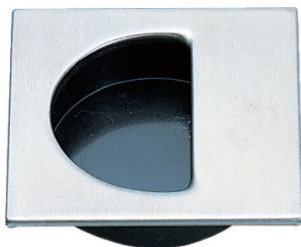
Item No.	L	L <sub>1</sub>	H	h	B	B <sub>1</sub>	a	Weight (g)	Box (pcs)	Carton (pcs)
UT-75/S	75 (2-61/64")	71 (2-51/64")	7.0 (9/32")	15.5 (39/64")	36 (1-27/64")	30.8	0.4	15	40	400
UT-105/S-1	105 ( 4-1/8" )	99 (3-57/64")	7.5 (19/64")		40 (1-37/64")	32.5	0.5	30	25	250
UT-140/S	140 (5-33/64")	134 ( 5-9/32" )	7.5 (19/64")	47 (1-27/32")	40.5	45		15	150	
<del>UT-105/PB</del>	<del>105 ( 4-1/8" )</del>	<del>99 (3-57/64")</del>	<del>7.5 (19/64")</del>	<del>15.5 (39/64")</del>	<del>40 (1-37/64")</del>	<del>32.5</del>	<del>0.5</del>	<del>30</del>	<del>25</del>	<del>250</del>

DISCONTINUED

# RECESSED PULL



# SP



Panel Installation

Material	Finish/Color
304 Stainless Steel	Satin (S)
Brass (SP-35/PB only)	Polished Brass (SP-35/PB)
Plastic	Black

Item No.	L	B	H	h	D	d	Weight (g)	Box (pcs)	Carton (pcs)
SP-35/S	44 (1-47/64")	44 (1-47/64")	2.2	9.8 (25/64")	35.1	31	10	100	1000
SP-38/S	47 (1-27/32")	47 (1-27/32")		10.3 (13/32")	37.6	34	11	60	1440
SP-48/S	57 ( 2-1/4" )	57 ( 2-1/4" )		48.6	44	16	50	1200	
SP-35/PB	44 (1-47/64")	44 (1-47/64")		9.8 (25/64")	35.1	31		10	1000