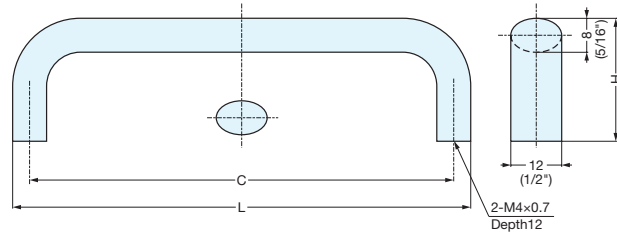


# HANDLE



## KK-H

- Silver ion coated on all finishes except black.



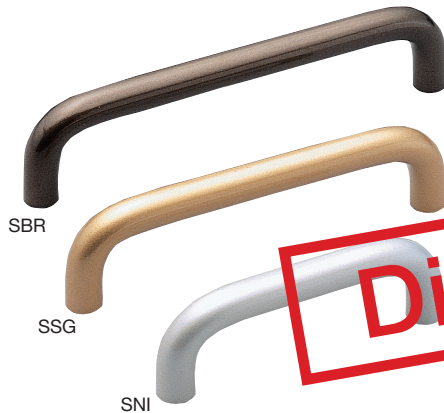
Item No.	Material	Finish/Color	L	C	H	Weight (g)	Box (pcs)	Carton (pcs)
KK-H80SNI	Aluminum Alloy	Nickel + Silver Ion Coating	78 (3-1/16")	70 ( 2-3/4" )	28 (1-3/32")	20	25	200
KK-H80SSG		Satin Gold + Silver Ion Coating						
KK-H80SBR		Brown + Silver Ion Coating						
KK-H80BL		Black						
KK-H110SNI		Nickel + Silver Ion Coating	108 ( 4-1/4" )	100 (3-15/16")	29 (1-9/64")	25		
KK-H110SSG		Satin Gold + Silver Ion Coating						
KK-H110SBR		Brown + Silver Ion Coating						
KK-H110BL		Black						
KK-H130SNI		Nickel + Silver Ion Coating	128 (5-1/32")	120 (4-23/32")	30 (1-3/16")	30		
KK-H130SSG		Satin Gold + Silver Ion Coating						
KK-H130SBR		Brown + Silver Ion Coating						
KK-H130BL		Black						

# HANDLE

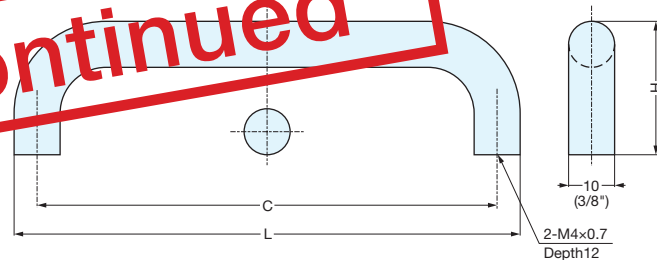


## KK-M

- Silver ion coated.



**Discontinued**



Item No.	Material	Finish/Color	L	C	H	Weight (g)	Box (pcs)	Carton (pcs)
KK-M80SNI	Aluminum Alloy	Nickel + Silver Ion Coating	80 ( 3-1/8" )	70 ( 2-3/4" )	28 ( 1-3/32" )	20	25	200
KK-M80SSG		Satin Gold + Silver Ion Coating						
KK-M80SBR		Brown + Silver Ion Coating						
KK-M110SNI		Nickel + Silver Ion Coating	110 ( 4-5/16" )	100 ( 3-15/16" )	29 ( 1-9/64" )	25		
KK-M110SSG		Satin Gold + Silver Ion Coating						
KK-M110SBR		Brown + Silver Ion Coating						
KK-M130SNI		Nickel + Silver Ion Coating	130 ( 5-1/8" )	120 ( 4-23/32" )	30 ( 1-3/16" )	30		
KK-M130SSG		Satin Gold + Silver Ion Coating						
KK-M130SBR		Brown + Silver Ion Coating						