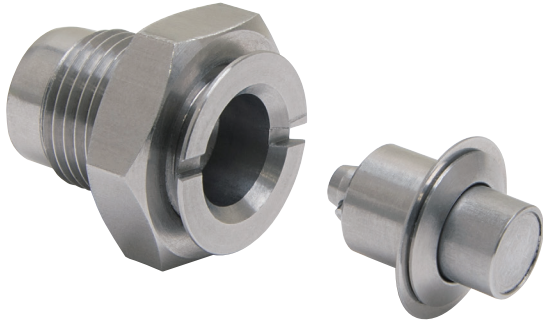


STAINLESS STEEL PUSH LOCK FASTENER

STAINLESS
304
STEEL

152FT

- Fast, easy placement and removal of panels without the need for screws.
- Flush locked cam design prevents accidental release during vibration.
- Stainless steel construction for excellent corrosion resistance.
- Component parts stay securely installed on sheet metal.
- Ideal for sheet metal applications, food equipment and assembly/disassembly of steel enclosures (analysis machine, medical machine, aircraft, machine tool, CNC).



When plug is pushed

Installation Image

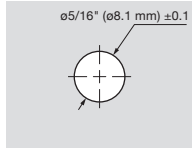


Locks flush to prevent release.

Panel Side Mounting Hole Dimensions

• Hole

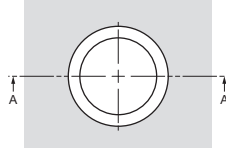
Door thickness T_1 :
1/32" to 3/16"
(0.8 mm to 4.8 mm)



Housing Side Mounting Hole Dimensions

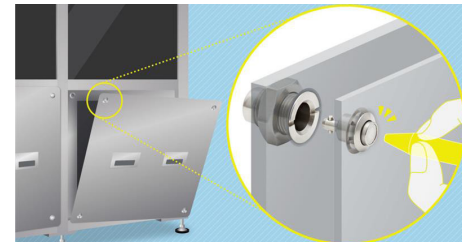
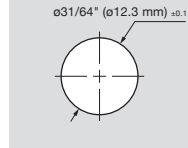
• Countersink hole

Door thickness:
3/32" to 23/64"
(2.2 mm to 9 mm)

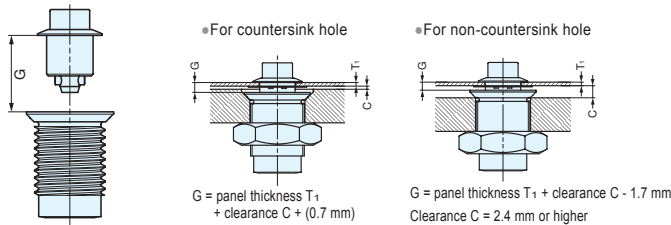
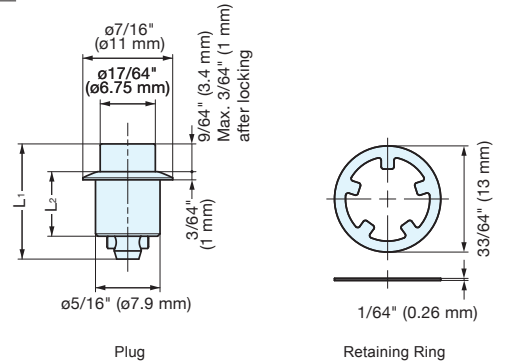
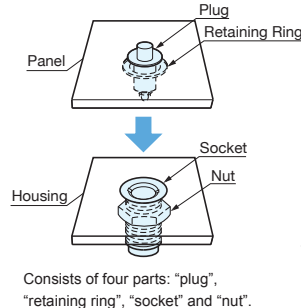
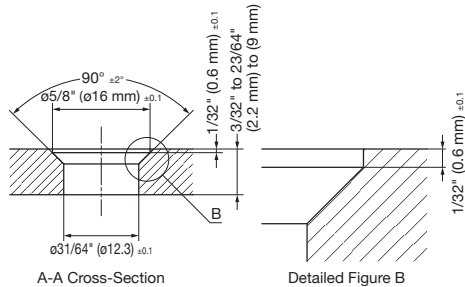


• No countersink hole

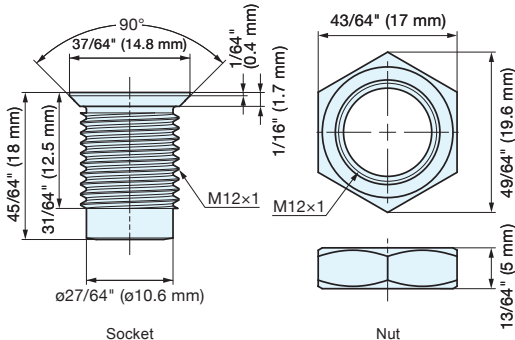
Door thickness:
1/32" to 19/64"
(0.8 mm to 7.5 mm)



Push with pointed object to release fastener.
Fasteners stay on the panel even when they are unlocked.



Grip Dimension G The distance from the plug flange bottom surface to the socket top surface is the grip dimension G.
Set so that the grip dimension G is 1.2 mm to 6 mm.



Item No.	Material	Grip Dimension G	Plug Dimension L_1	Plug Dimension L_2	Retaining Force	Weight (g)
152FT-12-SS	304 Stainless Steel	3/64"~5/64" (1.2~2 mm)	9/16" (14.1 mm)	5/16" (7.9 mm)	33 lbf (15 kgf)	18
152FT-20-SS		5/64"~7/64" (2~2.8 mm)	19/32" (14.9 mm)			
152FT-28-SS		7/64"~9/64" (2.8~3.6 mm)	5/8" (15.7 mm)			
152FT-36-SS		9/64"~11/64" (3.6~4.4 mm)	21/32" (16.5 mm)	13/32" (10.3 mm)		
152FT-44-SS		11/64"~13/64" (4.4~5.2 mm)	11/16" (17.3 mm)			
152FT-52-SS		13/64"~15/64" (5.2~6 mm)	23/32" (18.1 mm)			