

## MULTI-ROLLER LINEAR SLIDE SYSTEM



MLG



- Smooth and high precision movement with the unique mechanism called "multi-roller".
- Please use with stoppers.
- Common applications include medical equipment, food processing equipment, gaming and vending machines, analytical instruments, factory automation.

## Compact



## Vertical



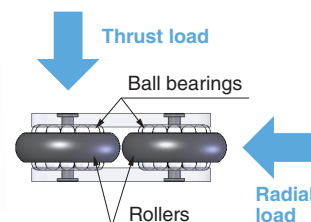
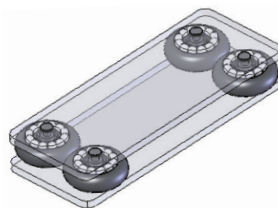
## Radial



## Thrust

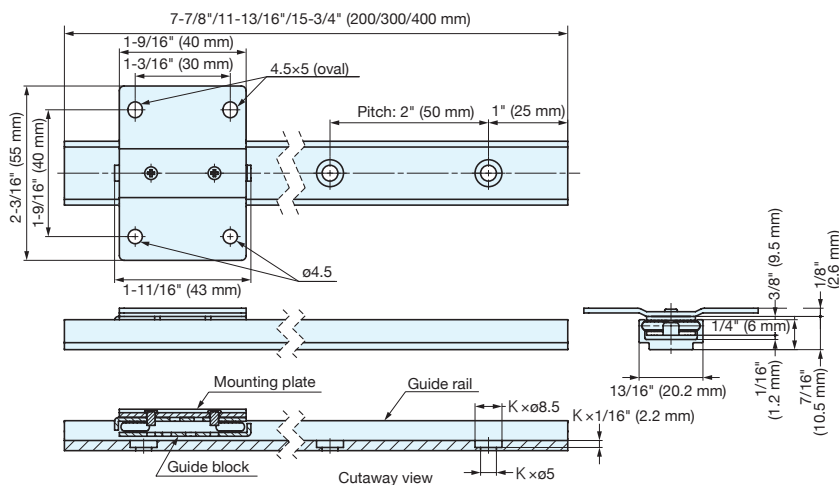


## The Unique Mechanism



## Combination Drawings

The guide rail, guide block, and mounting plate are used.



The multi-roller mechanism makes it possible to have smooth movements even with loads applied in radial or thrust directions.

## Rated Load Reference Values The rated load refers to the load limit.

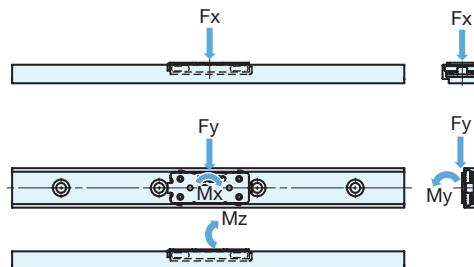
- Max. load = Static rated load × Static safety coefficient
- Operating load = Max. load × Dynamic safety coefficient

- Max. moment = Static rated moment × Static safety coefficient
- Operating moment = Max. moment × Static safety coefficient

Use Conditions	Static Safety Coefficient	Dynamic Safety Coefficient
Low movement frequency with gentle movement	0.4~0.5	0.9~1.0
High movement frequency with smooth movement	0.3~0.4	0.6~0.8
High movement frequency with vibration or impact	0.2~0.3	0.3~0.5

Item Name	Horizontal Static Rated Load Fx		Vertical Static Rated Load Fy	
	lbf	kgf	lbf	kgf
MLG-20C	8.9	4.0	8.9	4.0

Item Name	Vertical Static Rated Moment Mx		Horizontal Static Rated Moment My		Horizontal Static Rated Moment Mz	
	lb-in	kgf-cm	lb-in	kgf-cm	lb-in	kgf-cm
MLG-20C	10.6	12.2	3.5	4.0	7	8.1



The calculation formula above is for reference purpose only. Please confirm with the actual item before use.

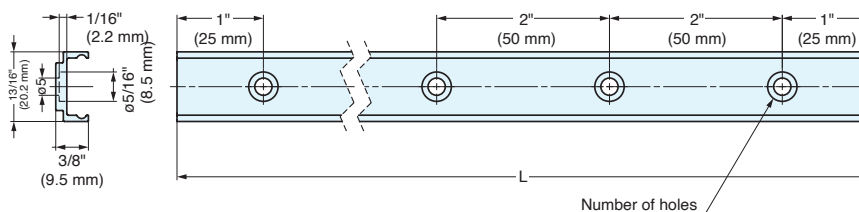
## GUIDE RAIL



# MLG20



- Requires MLG-20C Multi-Roller Guide Block. MLG20-P55-40 Mounting Plate is optional (based on the application).
- Allows for smooth movement with the unique mechanism called "multi-roller".
- Please use with stoppers.
- The finish of the mounting holes and the rail edge is plain.
- Common applications include food processing equipment, gaming and vending machines, medical and analytical machines, factory automation.
- Recommended screw: 4mm or #8 Hexagon Socket Bolt.



Item No.	L	No of Holes	Material	Finish	Weight (g)	Box (pcs)
MLG20-200	200 (7-7/8")	4	Aluminum Alloy	Anodized Silver	36	200
MLG20-300	300 (11-13/16")	6			54	100
MLG20-400	400 (15-3/4")	8			72	50

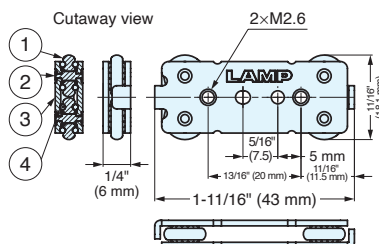
## MULTI-ROLLER GUIDE BLOCK



## MLG-20C



- Requires use with MLG20 guide rail. MLG20-P55-40 Mounting Plate is optional (based on the application).
- Smooth and high precision movement with the unique mechanism called “multi-roller”.
- Please use with stoppers.
- Common applications include food processing equipment, gaming and vending machines, medical and analytical machines, factory automation.
- Recommended screw: M2.6 x 2 (Max. length: sheet thickness + 4 mm).



Item No.	Weight (g)	Box (pcs)
MLG-20C	13	200

[Parts Included]

- #0-1 pan head screw M2.6 x 4

[Recommended Screw]

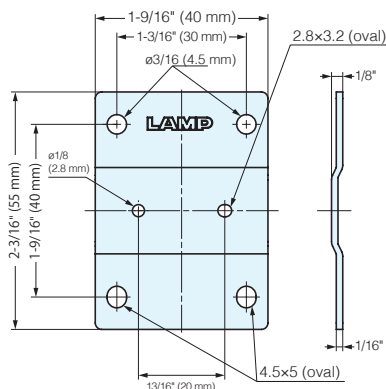
- Screw M4

No.	Part Name	Material
1	Roller	Plastic
2	Pin	303 Stainless Steel
3	Plate	304 Stainless Steel
4	Ball	Steel

## MOUNTING PLATE



# MLG20-P55-40



- Requires use with MLG-20C guide block and MLG20 guide rail.
- Common applications include food processing equipment, gaming and vending machines, medical and analytical machines, factory automation.
- Recommended screw: #0-1 pan head screw M2.6 x 4.

Item No.	Material	Finish	Weight (g)	Box (pcs)
MLG20-P55-40	304 Stainless Steel	Plain	26	100